

# **Installation Method of Straight Section of Mesh Cable Tray**





## Installation Method of Straight Section of Mesh Cable Tray

---



### Wire Mesh Cable Tray Installation Guide: How to complete cabling

By following these detailed steps, and specifically leveraging the advantages of quick couplers and on-site shaping, your Wire Mesh Cable Tray installation project will achieve maximum

### Cable Tray Technical Guide A practical guide to product selection and

Cable tray is considered to be a system. It must provide continuous support for cables, and the electrical continuity of the cable tray system must be maintained.



### Best Practice Guide to Cable Ladder and Cable Tray Systems

This publication is intended as a practical guide for the proper and safe\* installation of cable ladder systems, cable tray systems, channel support systems and associated supports.



### Method Statement for the Installation of Cable Tray, Trunking, and

2. Purpose This document shows and explains the procedure and detailed installation method statement not only for cable tray but applicable for GI ladder and trunking for indoor and outdoor applications



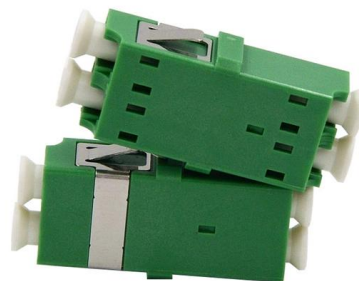
### **Cable Tray Institute**

The Cable Tray Institute (CTI) was founded in 1991 to support the cable tray industry by engaging in research, development, education, and the dissemination of



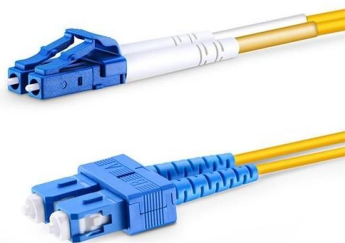
### **Wire Mesh Cable Trays Technical Information Detailed,**

Wire Mesh Cable Tray Installation Notice: Bends, Risers, T Junctions, Crosses and Reducers can be made from wire mesh cable tray straight sections flexibly in



### **CABLE TRAY SYSTEMS GUIDE**

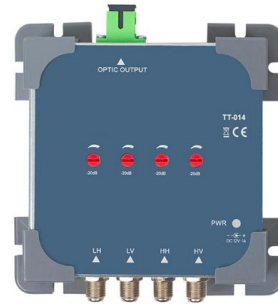
Material: Side Rails: Fitting side rails are I-beams with overall dimensions similar to straight tray sections. Rungs and Bottoms: Rung and Bottom designs are identical to similar straight cable tray





## Cable Tray Installation Method Statement

Below is the detailed cable tray installation method statement not only for cable tray but also applicable for GI ladder and trunking for indoor and outdoor applications

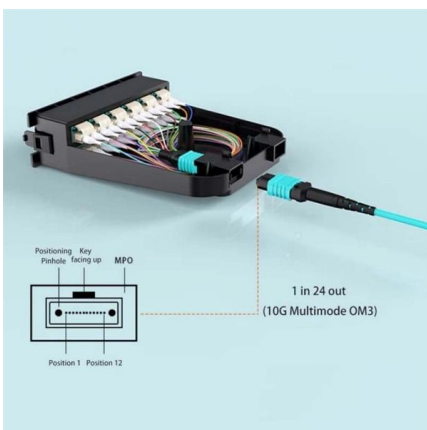


### Step-by-Step: Installing 10 ft. Mesh Cable Tray Sections Solo

Installing 10-foot mesh cable tray sections alone may seem challenging at first, but with proper planning, the right tools, and a clear understanding of NEC requirements, contractors can

### Installation of Cable Tray, Trunking And Accessories

2. Purpose This method statement for the Installation of Cable Tray, Trunking, and Accessories shows and explains the procedure must be followed to install the cable tray and



### Method Statement for Installation of Cable Tray or Trunking

On completion of cable tray/ ladder installation including fittings, inspect exposed finish. Remove burrs & construction debris and repair damages finishes



## Best Practice Guide to Cable Ladder and Cable Tray Systems

Introduction This publication is intended as a practical guide for the proper and safe\* installation of cable ladder systems, cable tray systems, channel support systems and associated supports.

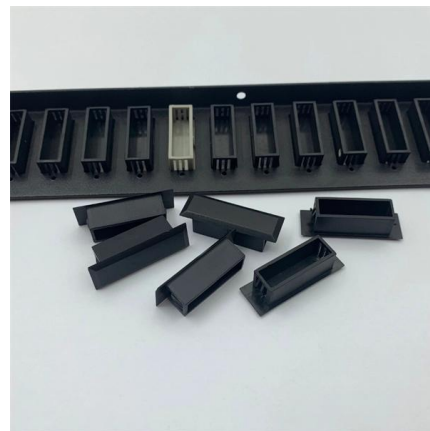


### Cable Tray Technical Guide A practical guide to product selection and

A practical guide to product selection and installation This guide for engineers and installers has been developed by ABB as a practical reference regarding cable tray characteristics, installation, and

### Wire Mesh Cable Tray: Complete Installation Guide

In modern industrial and commercial environments, effective cable management is essential for ensuring safety, organization, and ease of



### INSTALLATION GUIDE

To limit damage, straight lengths should be bundled and shipped on a flat deck trailer. Straight lengths are shipped without exterior crating. Fittings and ancillary products are often boxed/palletized and





## Cable Tray Types & Installation Guide , Enagalxy

B- Wire Mesh Cable Tray / Wire Basket Tray: It is ideally suited for light-to-medium-duty commercial and industrial applications where space is at a premium. SFSP



### Installation Of Cable In Cable Trays: NEC, Safety

For pulling eyes and bolts, the tension generated in a straight section of cable tray is expressed as: Practical techniques for pulling setups, sheave placement, and

### Cable Tray Installation and Cable Handling Method

Cable tray supports should be strategically positioned so that connectors between horizontal straight sections of the tray fall between the support point and the



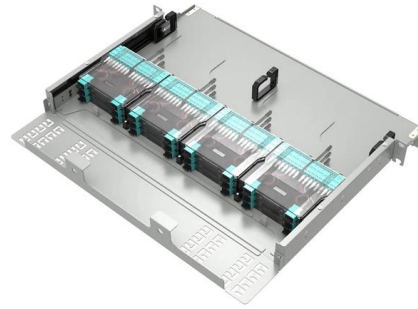
### How to Install a Wire Mesh Basket or Cable Tray , CMW

Learn how to properly install a wire mesh basket tray or cable tray for effective cable management. Tips, tools, and advice from the experts at CMW.



## Cable Tray Systems: A Complete Guide to Types

Discover the essential guide to cable tray systems. Learn about ladder, trough, and wire mesh types, key components, and expert installation tips

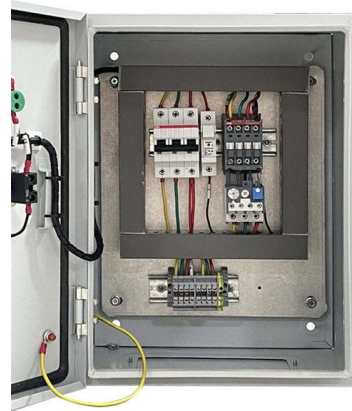


### Mesh cable tray systems

Mesh cable tray systems Mounting instructions © 2020 OBO Bettermann Holding GmbH & Co. KG Reprinting, even of extracts, as well as photographic or electronic reproduction are prohibited! Table

### Document DICOS

wire mesh cable tray fitting: A fitting for wire mesh cable tray systems, fabricated from wire mesh cable tray straight sections. The fitting is field-constructed and attached to the adjacent sections using



### Cable Tray Installation Method Statement

This document provides a method statement for installing cable trays and ladder trays on the Sheikh Jaber Causeway project. It outlines procedures for storage



## Mastering Cable Tray Installation , Step-by-Step Guide for a Seamless

Learn how to install cable trays correctly. Get the ultimate step-by-step guide on setting up a seamless and reliable cable management system.



### Method Statement installation of Cable Trays and Ladders

This method statement covers the site installation of the cable tray & ladders and the requirements of checks to be carried out.

### Cable Tray Raceway Fill and Load Calculations

On the other hand cable tray supporting system can not be neglected as well since it ensures the integrity of whole cable management installations. The the following



### Technical Specification for Cable tray installation and cable laying work

All the necessary equipment, tools & tackles, welding machines, drill machine, cutting machine etc. for the fabrication and installation of MS section, and cable tray have to be arranged by the contractor, 4.

All-Optical Backplane	Many-Degree WSS	Digital Optical Layer
<p>→ Zero fiber connections at the optical layer, three layers of dog-eared design, and stable running for 25 years.</p> <p>→ Innovative multi-level dustproof and optical port alignment technologies, ensuring high reliability.</p>	<p>→ 32 degrees, non-blocking flexible grooming.</p> <p>→ Capabilities, O&amp;A-free, high reliability, 2x wavelength dropping efficiency compared with traditional boards.</p>	<p>→ Use of OFDM pilot tone and high-precision wavelength monitoring technologies to visualize the fiber quality, wavelength resources, and performance of the ODC system, achieving digital O&amp;M.</p>



## Cable Tray Installation SOP Guide

This document provides standard operating procedures for installing cable tray systems. It discusses receiving and unloading procedures, storage guidelines,



## Contact Us

For datasheets, pricing, or custom high-speed optical interconnect solutions, please visit:  
<https://www.syropy.com.pl>