

# **Installation Method of Power Distribution Box**

**Waterproof and dustproof, reliable and safe**

**The outer classic sink design allows the sealing ring of the cabinet and door to be seamlessly compressed without leaving a trace of gaps**





## Installation Method of Power Distribution Box

---

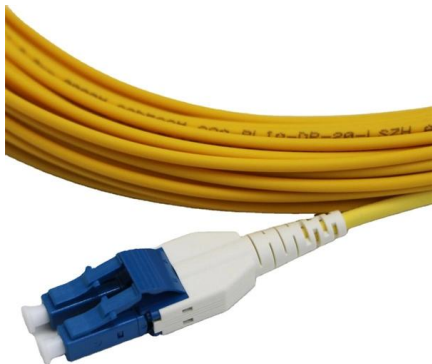


### Summary of key points for construction and installation of distribution

The construction and installation points of distribution boxes and switch boxes are summarized as follows: 1. Select qualified products that meet national standards and safety requirements.

### The Complete Guide to Distribution Box: Installation, Types & More

Proper installation of a distribution box requires careful planning and adherence to electrical codes. While major installations should always involve qualified electricians, understanding



### Distribution Box Wiring Steps

?Location determination?: Determine the installation position of the circuit breaker according to the position of the circuit breaker installation hole on the box

### Distribution Boards

Distribution boards, often referred to as electrical panels or breaker boxes, serve as the nerve center of any electrical system. Here we explore the crucial parts of a distribution board and gain insights into

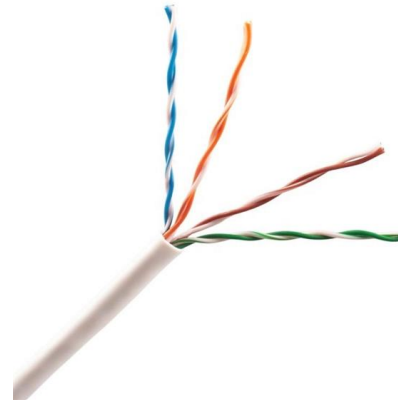


### **JXF Power Distribution Box (Cabinet) User Manual**

Please carefully read this manual before the installation, operation, run, maintenance, and inspection of the product, and follow the contents of the manual to accurately install and operate this product.

### **Distribution Box Installation: A Complete Guide to Safe**

In this comprehensive guide, we'll cover everything you need to know about distribution box installation, from the basics to the step-by-step installation



### **How to Install a Distribution Box--A Comprehensive**

First of all, you need to have a simple understanding of the definition of a distribution box, and make it clear which kind of distribution box you want to





## What is a Distribution Box? - A Comprehensive Guide

A distribution box organizes and controls power flow, ensuring safety and efficiency in electrical systems.



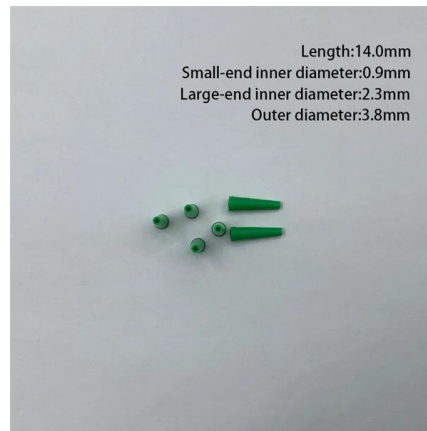
## Requirements And Specifications For Installation Of

The installation requirements and specifications of Distribution box involve many aspects, including site selection, fixing method, wiring specifications



## Electrical Power Distribution Box: A General Installation

A practical general guide to installing and maintaining electrical power distribution boxes for international buyers. Includes safety best practices and



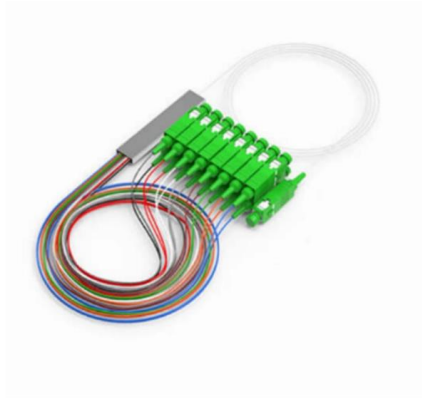
## Electric Panel Installation Method Statement

This document provides a method statement for installing and terminating electric panels and distribution boxes. It outlines 4 steps: 1) Pre-installation preparation



## Understanding Distribution Boxes: A Comprehensive Guide

Distribution boxes can be classified in different ways depending on the installation environment, enclosure material, and mounting method. In



## Step-by-Step Guide to Install MCB Distribution Box

Learn how to safely install an MCB distribution box with this comprehensive guide. Step-by-step instructions to ensure correct installation.

## How to determine the size, installation method and

(1) Wiring method of distribution box 1)  
Generally, the incoming line of power distribution box adopts five wire system, that is, a, B and C three-way phase line



## Distribution Boxes Explained: Types, Functions, and

Learn about distribution boxes, their types, functions, and safety features to ensure efficient and secure electrical power distribution in any building.



### Small distribution box installation steps

The steps to install a small distribution box include selecting a suitable location, installing the base, placing the distribution box, connecting the



### How to Install a Cable Distribution Box Safely and

This article provides a detailed overview of the entire process of installing a distribution box, from pre-installation preparation to post-installation

### Distribution Box Installation: A Complete Guide to Safe

The distribution box, often referred to as a breaker box, fuse box, or electrical panel, is a critical component of any electrical system. It acts as the central hub for



### How to choose and install the indoor small power distribution box

The above suggestions can help you correctly select and install indoor small power distribution boxes to ensure the safety and reliability of the household electrical system.



## Key Points Of Installation And Collocation Of Distribution Box In

If they are combined in the same distribution box, power and lighting lines should be set separately. 7. The wire inlets and outlets in the distribution box and switch box shall be set at the lower bottom of



## Requirements And Specifications For Installation Of

Installation height and fixing method?: The bottom edge of the distribution box is usually between 1.5 meters and 1.8 meters above the ground,

## Power distribution cabinet installation method and

In addition to the above-mentioned quality certification documents, the low-voltage complete power distribution cabinet, power and lighting distribution box (disk,



## Contact Us

---

For datasheets, pricing, or custom high-speed optical interconnect solutions, please visit:  
<https://www.syropy.com.pl>