

Installation Method of Ladder-Type Cable Tray Cable Clips





Installation Method of Ladder-Type Cable Tray Cable Clips



Method Statement for the Installation of Cable Tray, Trunking, and

2. Purpose This document shows and explains the procedure and detailed installation method statement not only for cable tray but applicable for GI ladder and trunking for indoor and outdoor applications

Cable Tray Installation Method Statement

Below is the detailed cable tray installation method statement not only for cable tray but also applicable for GI ladder and trunking for indoor and outdoor applications



Cable Ladder and Tray Installation Guide

The installation procedure involves preparing materials, installing

Best practice guide to cable ladder and cable tray

The following recommendations are intended to be a practical



Best Practice Guide to Cable Ladder and Cable Tray

Cable ladder and cable tray systems The following recommendations are intended to be a practical guide to ensure the safe and proper installation of



Cable Tray Trunking & Ladder Installation Method for

Resources For Electrical & Electronic Engineers Cable Tray Trunking & Ladder Installation Method for Projects The purpose of this article is to define the



Method Statement for Installation of Cable Tray or Trunking

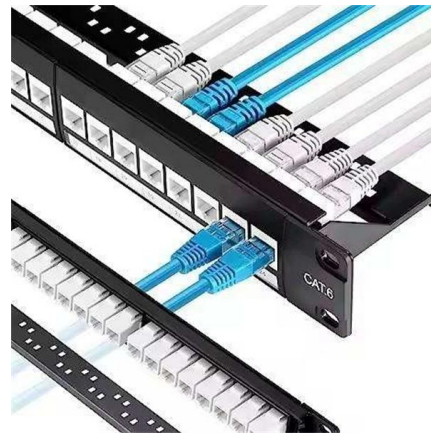
Provide sufficient space around cable tray for access. Cable Support System Use fish plate to joint & align cable tray where cable tray passes through





Cable Tray Installation

Whether you're building a commercial setup or upgrading an industrial plant, proper cable tray installation ensures neat wiring, safe access, and easy maintenance. But before you lay the first tray



Method Statement installation of Cable Trays and Ladders

This method statement covers the site installation of the cable tray & ladders and the requirements of checks to be carried out.

Cable Ladder and Tray Installation Guide

This document provides a method statement for installing cable ladder, tray, and perforated tray with support. It includes 8 sections that cover: 1) reference



How to install a ladder-type cable tray?

Ladder style cable tray is a device used to support and protect wires and cables, commonly used in buildings, industries, and commercial places. The following are the installation



Cable Tray and Ladder Installation Method

This document provides a method statement for installing cable trays and cable ladders. It outlines responsibilities for the project construction manager,



Beama Best Practice Guide , Installation Of The System , Cable

The following recommendations are intended to be a practical guide to ensure the safe and proper installation of cable ladder and cable tray systems and channel support and other support systems.

Cable Tray Installation Procedure Guide

This document provides procedures for installing cable trays according to international standards. It describes inspecting and storing cable trays upon



CAT 7 FTP JACK



Cable Tray Trunking & Ladder Installation Method for

The purpose of this article is to define the sequence and methodology for the installation of electrical cable trays, cable trunking, cable raceways and boxes,



How to Install Cable Tray: A Comprehensive Guide to Different Cable

Welcome to our step-by-step guide on installing cable trays! In this video, we'll explore the different types of cable trays available and provide detailed instructions for their installation.



B-Line series Cable Tray Design Considerations

Design recommendations for ladder cable tray
When supporting small diameter multi-conductor control and instrumentation cables, 6, 9, or 12-inch rung spacings should be specified.
Quality Type TC,

INSTALLATION GUIDE

The ladder tray system must be free of any hazards, which will interfere with the cable's install. Any ongoing or anticipated construction operations that may damage the cable or create a safety hazard



Best Practice Guide to Cable Ladder and Cable Tray Systems

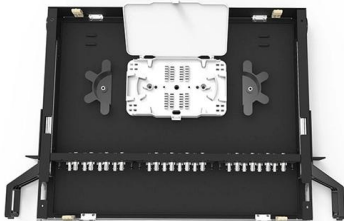
This guide covers cable ladder systems, cable tray systems, channel support systems and associated supports intended for the support and accommodation of cables and possibly other electrical





Cable Tray Technical Guide A practical guide to product selection and

A practical guide to product selection and installation This guide for engineers and installers has been developed by ABB as a practical reference regarding cable tray characteristics, installation, and

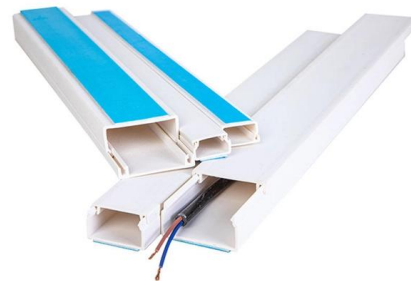


INSTALLATION GUIDE

Cable or "P" clamps and plastic tie wraps are used to fasten cables/conductors to the ladder tray. Single conductors must be fastened to prevent excessive movement generated by fault current magnetic

Guide to cable support systems

A cable support system consists of cable support lengths and system components, such as cable support fittings, support elements, mounting elements and system accessories. The cable support



Method Statement for Cable Tray Installation and

After laying of cables on the cable tray/ladder the cables are to be fastened to the tray with cable ties/saddles and cable cleats. Cable tray/Ladder joints shall have



Method Statement for Cable Tray & Ladder Installation

- Cable tray and ladder installations shall be inspected in accordance with relevant ITP and related inspection checklist. keywords: method statement, cable

DATA ADJUSTABLE, EASY TO USE



SET INCREASE DECREASE POWER SWITCH

Contact Us

For datasheets, pricing, or custom high-speed optical interconnect solutions, please visit:

<https://www.syropy.com.pl>