

Installation Method of Explosion-proof Distribution Box in Romania





Installation Method of Explosion-proof Distribution Box in Romania



CERTIFICATION OF EXPLOSION-PROOF EQUIPMENT IN

Thus, it even provides the opportunity to use highly complex electronic circuits without involving a significant explosion risk within the oil industry or in power plants, but not limited to

Explosion-proof distribution box installation environment requirements

When planning the installation path for the main circuit of an explosion-proof distribution box, it is essential to keep the route as short as possible. This helps reduce costs and simplifies the layout,



Installation Guide Explosion

When assembly, operation and maintenance, the operator must follow the requirements of the IEC 60079-14: latest version Explosive atmosphere-Part 14: Electrical installation design, selection and

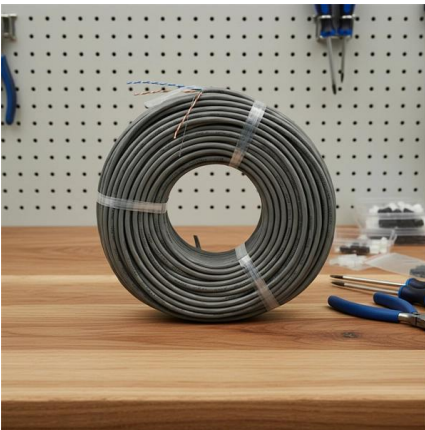
Special requirements for cable laying and distribution box installation

It's not just about compliance - it's about creating intrinsically safe systems where cable management and enclosure installation don't just meet standards but exceed them in design



Installation and Wiring of High and Low Voltage Explosion-Proof

Explosion-proof distribution boxes, vital terminal distribution equipment in power systems, play a crucial role in controlling and protecting industrial electricity in hazardous environments. Given



Ex Local Control Stations & Distribution Boxes

Ex Local Control Stations & Distribution Boxes Atexdelvalle offers world-class explosion-protected solutions guaranteeing highest quality and performance with



Explosion proof Power Distribution Panel Box

Power Distribution panel box - Hazardous locations for explosive gas mixtures: Zone 1 and Zone 2. Explosive gas mixtures: Class IIA, IIB, and IIC.

Length:33.5mm
Small-end inner diameter:5.0mm
Large-end inner diameter:6.0mm





How to Install Explosion-Proof Distribution Box

When installing, please follow the instructions strictly and ensure installation by a professional.
1. Open the terminal chamber cover, connect the



How to Wire the 380v Explosion-Proof Distribution Box

The three live wires should be connected to the upper entry of the main switch in the explosion-proof distribution box, and the neutral wire should be

Main Installation Methods of Explosion-Proof Lighting

Explosion-proof lighting distribution boxes typically employ one of the following three installation methods: 1) wall-mounted surface installation; 2) floor



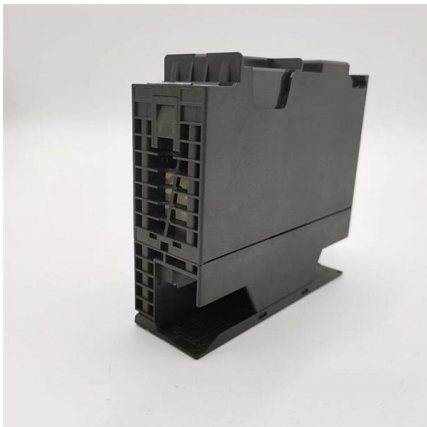
Explosion proof distribution box standards and installation issues

Consequence: The installation elevation of the lighting explosion-proof distribution box (panel) does not comply with the regulations, the installation is not firm, and the box is not vertical.



Explosion Proof Box & Cabinet

Product features: The explosion-proof control cabinet (box) can install various instruments inside. Low-voltage electrical appliances, frequency converters, PLCs, soft starters, and computer systems can



Full Guide on Explosion-Proof Distribution Panel

Explosion-proof distribution panels are vital components in hazardous industrial environments, ensuring safety by preventing electrical equipment from igniting

CERTIFICATION OF EXPLOSION-PROOF EQUIPMENT IN ROMANIA

Request PDF , On Jun 28, 2016, Sorin Burian published CERTIFICATION OF EXPLOSION-PROOF EQUIPMENT IN ROMANIA. PAST, PRESENT AND FUTURE , Find, read and cite all the research



Explosion Proof Enclosure Comprehensive Guide

Explosion-Proof Distribution box: These smaller components are structurally similar to distribution cabinets. You can use these for the distribution





Principles for Connecting Explosion-Proof Distribution

Explosion-proof systems, especially in hazardous environments, demand a meticulous approach to ensure safety and compliance with regulations. This

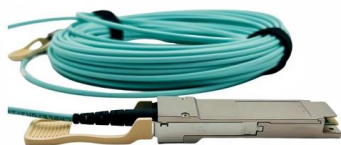


Requirements And Specifications For Installation Of

The installation of explosion-proof distribution boxes should follow specific explosion-proof grades and material requirements to ensure their safety

BM (D)X-Series Explosion Protected Distribution Box

BM (D)X-Series Explosion Protected Distribution Box Explosion protection -IECEX (IEC) -ATEX (CENELEC,EN) -China Ex (GB) Application in hazardous area



Distribution box solutions for explosion-proof environments in

Explosion-proof distribution boxes represent where regulatory wisdom meets engineering excellence. What appears as simple protective enclosures are actually sophisticated safety systems honed



Explosion Proof Junction Box Types, Prices

Learn about explosion proof junction boxes--pricing, sizes, certifications, and installation tips for electricians and engineers. Shop certified

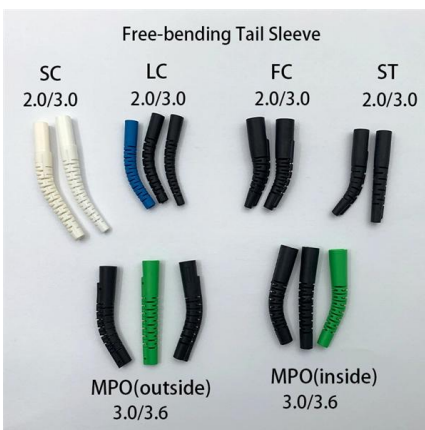


Explosion Proof Distribution box-

Explosion Proof Distribution box is applicable to explosive gas mixture Hazardous locations: Zone 1, Zone 2, Zone 20, Zone 21, Zone 22;explosive gas mixture: II A, II B, II C level;the temperature

Operational Safety in Explosive Atmospheres , RO , TÜV Rheinland

Our experts analyze and perform zone classification, supervise new or in-service installations in hazardous atmospheres, and set up your explosion protection document. We supplement your risk



Explosion Proof Power Distribution Boxes

Flameproof and explosion proof, these power overhaul distribution boxes are suitable for use in hazardous areas. Specs: Ex mark: Ex de IIC T4 Gb DIP A21 TA,T4



Principle and applicable area of explosion-proof distribution box

Because when explosion-proof distribution boxes are properly specified, installed, and maintained, they become invisible guardians. They represent the quiet professionalism of engineers



Explosion-Proof Distribution Boxes & Panels Manufacturer

The explosion-proof distribution box safely delivers power in hazardous zones (oil, gas, chemical plants) with rugged, spark-resistant casing--ATEX/IECEX, IP66 certified for reliable operation in explosive

How to Wire an Explosion-Proof Distribution Box and

Proper installation, wiring, and usage are critical to ensuring the safety and functionality of these systems. Below, we will discuss the correct wiring methods



Distribution boxes electrical installation Romania , B2B

All Companies and suppliers for distribution boxes (electrical installation) Find wholesalers and contact them directly Leading B2B marketplace Find companies now!



CE92 Explosion-proof power distribution boxes

CE92 Explosion-proof power distribution boxes
Category: Atex Junction Boxes



Explosion Proof Illumination Distribution Boxes (With

Flameproof and explosion proof, these power overhaul distribution boxes are suitable for use in hazardous areas. Specs: Ex mark: Ex de IIC T4 Gb DIP A21 TA,T4

ATEX Products , SMC Romania

Devices and protective systems for use in potentially explosive atmospheres must have been approved in accordance with Directive 2014/34 /EU, known as ATEX, since 1 July 2003.



Contact Us

For datasheets, pricing, or custom high-speed optical interconnect solutions, please visit:
<https://www.syropy.com.pl>