

Install backup power supply in the distribution box





Install backup power supply in the distribution box

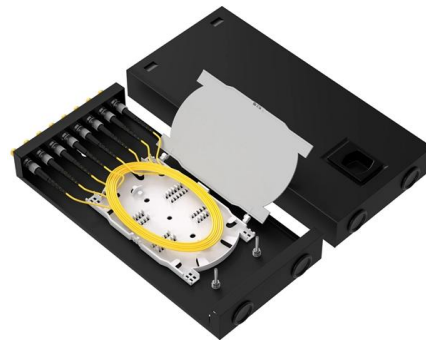


Power Distribution Boxes Explained Simply

Learn what a power distribution box is, how it works, key components, types, and why it's vital for safe and efficient electrical systems.

How to Install a Distribution Box--A Comprehensive

Distribution boxes contain many protective devices like circuit breakers, fuses, and isolator switches to distribute and regulate power from the



How to Connect an Inverter to a Distribution Board

Step-by-step guide on connecting an inverter to your distribution board for uninterrupted power supply. Connecting your inverter to the distribution board is crucial for ensuring a reliable

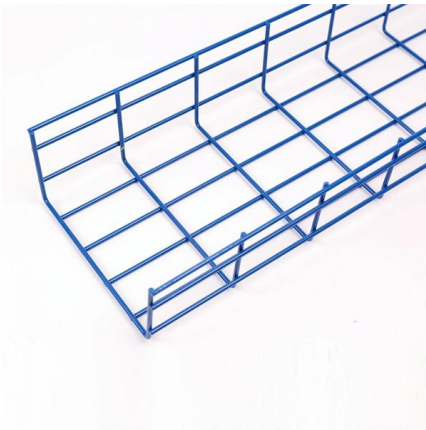
What is the Internal Structure of The Distribution Box

What is a Distribution Box? Definition A distribution box is an essential electrical component used to manage and control the flow of electricity



How Does a Power Distribution Box Work

Learn how a power distribution box works step by step--from incoming power to circuit protection and smart monitoring--for safe, efficient electricity delivery.



Step-by-Step Guide to Connecting an Inverter to a

Connecting an inverter to a distribution board is a practical solution for ensuring a continuous power supply during outages. Following the steps outlined



Handbook: Quick guide to power distribution

Types of power distribution Power distribution is facilitated through different pieces of equipment that take the power conditioned by your uninterruptible power supply (UPS) and send it to your IT





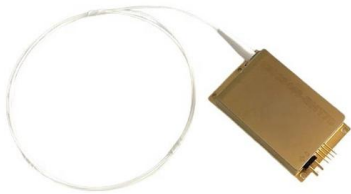
Power Distribution Box

This manual contains important instructions for Power Distribution Box that should be followed during installation, operation and maintenance of the Power Distribution Box to protect the safety of the



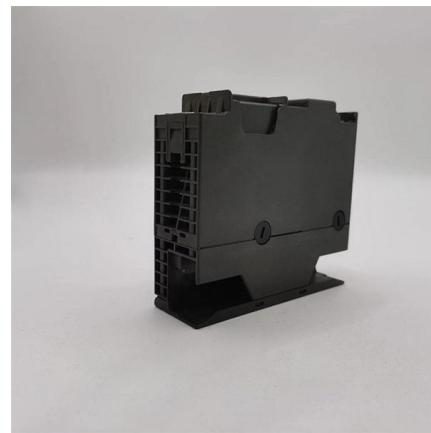
Understanding Distribution Boxes: A Comprehensive Guide

Distribution box What Is a Distribution Box Used For A distribution box is used to receive electrical power from a main supply and distribute it to



Choosing and Installing a Sub Panel for a Generator: A

This article explores the benefits, types, installation process, and key considerations for using a sub panel with a generator, providing essential insights for homeowners, electricians, and



Your Sustainability Transformation Partner , Fujitsu Global

Our purpose: Make the world more sustainable by building trust in society through innovation.



Backup Power Installation Guide

These articles regulate the installation, operation and maintenance of emergency, legally-required and optional backup power systems. We encourage customers to consult a qualified electrician or



Integrated Aluminum Alloy
Die Casting



Durable and Secure Metal Screws



Distribution Box Guide: Types, Components & Solutions

Distribution boxes, also known as DB boxes, serve as critical components in electrical systems by distributing electrical power safely and

Distribution Box Installation: A Complete Guide to Safe

The distribution box, often referred to as a breaker box, fuse box, or electrical panel, is a critical component of any electrical system. It acts as the central hub for



How to Wire a UPS/Inverter:for our home distribution box

In this video, we'll guide you through the process of wiring a UPS (Uninterruptible Power Supply) or inverter for your home or office. Learn how to connect a



How to install a manual transfer switch for a backup

Manual transfer switch installation A manual transfer switch is installed next to the main service panel to override the normal electrical service with power



How To Connect Inverter To Distribution Board

This setup provides backup power during outages and can also contribute to energy savings by utilizing renewable energy sources. This guide will walk you through the step-by-step

Quick Guide

Before connecting cables, ensure that the circuit breaker on the Backup Box and all the switches connecting to the Backup Box are set to OFF position. Otherwise, the high voltage of the Backup



How to Use a Power Distribution Box? Sxpowercase

Learn how to safely use a power distribution box with our step-by-step guide. Ensure reliable performance and prevent electrical hazards.



Backup Power Installation Guide

Customers who are ready to install their backup power system should consult a qualified electrician or contractor who understands local building codes and notification requirements.



Connecting Inverter to Distribution Box: Essential Safety

In this article, you will find information about connecting inverter to distribution box: essential safety tips, step-by-step guidance, and common mistakes that often

The installation requirements for the distribution box

Learn how to install a distribution box safely and correctly. Covers wiring, placement, standards, and expert tips for a compliant setup.



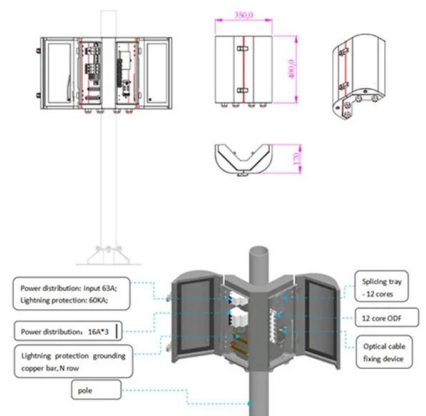
Step-by-Step Guide to Connecting an Inverter to a

Connecting an inverter to a distribution board (DB) is a crucial step in ensuring uninterrupted power during outages. The process begins with turning off



Power Distribution Box

UPS model names that this Power Distribution Box can be installed are shown in the table below. Check that this Power Distribution Box is available for your UPS model.



What is a Distribution Box? - A Comprehensive Guide

A distribution box organizes and controls power flow, ensuring safety and efficiency in electrical systems.

Wiring of the Distribution Board with RCD (Single Phase)

A distribution board unit installed in the buildings which firstly receive the incoming single phase electric supply (AC low voltage (LV) (230V AC or 120V AC in US)



Contact Us

For datasheets, pricing, or custom high-speed optical interconnect solutions, please visit:

<https://www.syropy.com.pl>