

Inspection of Cable Tray Materials Upon Arrival





Overview

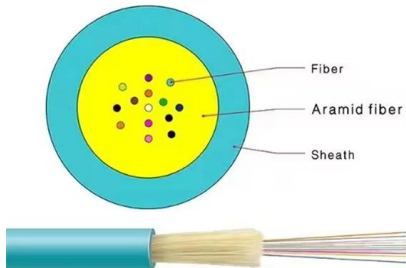
Inspect tray covers for proper installation to protect against dust, water ingress, and mechanical impact. In this detailed guide, we'll explore the essential inspection methods for cable trays, focusing on maintaining their structural integrity, load-bearing capacity, fire resistance, and more.

Inspection Test Plan for Cable Tray and Accessories Installation Description of inspection/test and production stage Characteristics Reference Documents Records Documentation Method Statements Execution procedures and instructions approved Laboratories accreditations Local normative / Include in.

The attached editable checklist format let you know about your QA/QC INSPECTION CHECKLIST FOR CABLE TRAYS, TRUNKING, LADDERS & ACCESSORIES and will help you to carryout your QA/QC & MEP services safely. it is also very helpful for the professional editors to fill this checklist before they start.



Inspection of Cable Tray Materials Upon Arrival



QA/QC Inspection Checklist for Cable Trays Ladders etc

QA/QC INSPECTION CHECK LIST FOR CABLE TRAYS,TRUNKING,LADDERS & ACCESSORIES The attached editable checklist format let you know about your QA/QC

Cable Tray Installation Checklist

This checklist is used to inspect cable trays, trunking, and conduits during installation. It contains 10 items to check, including verifying the material type and



Cable Tray Materials Standard: Global Compliance Guide

Get a complete guide to cable tray materials standards in China, the U.S., the EU, India, Australia, the Middle East, and more. Ensure compliance and

Inspection Test Plan for Cable Tray and Accessories Installation

This article is about ITP (Inspection Test Plan) Plan for Cable Tray and Accessories Installation.



METHOD STATEMENT FOR CABLE TRAY AND

This procedure to clear the method of the supply, installations Cable Tray and Trunking System for the project. This document details the Cable Tray



Method Statement for Cable Tray Installation

Prior to any inspections, verify and check cable trays as per IFC drawing, detail drawing, materials specification; supports and accessories are installed in a workmanlike manner as shown on



Method Statement for Cable Tray Installation

6.2 Material Receiving, Handling and Preparation
6.3 Installation of Cable tray 7 TOOLS AND EQUIPMENT.. 8 INSPECTION / TESTING. Method Statement for Cable Tray



Method statement for Receiving and Incoming Material

Below is a method statement which is helpful for defining the procedure for receiving and inspecting incoming materials on the project



Key Steps for Regular Cable Tray Inspection Success

Gain expert insights into cable tray inspection and grounding requirements to meet safety and compliance standards.

Cable Tray Inspection Checklist for Safety and Efficiency

Below is a comprehensive checklist of the most important items to verify: ? 1. Type of Cable Tray
o Ensure the type (perforated / ladder / enclosed) matches the design intent.
o Verify the



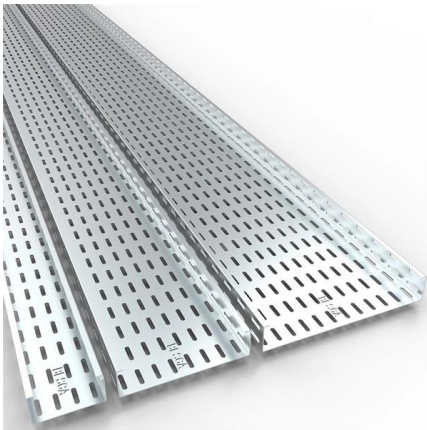
Cable Installation Inspection And Test Plan (2024)

Cable Installation Inspection And Test Plan
Lingsheng Yao Content Method Statement for the Installation of Cable Tray, Trunking, and Mark the location of installation and install the approved



Instrumentation Cable Tray Installation Checklist and Inspection

This procedure includes pre-installation preparation, material verification, layout inspection, and final testing, ensuring reliable and efficient cable tray installations.

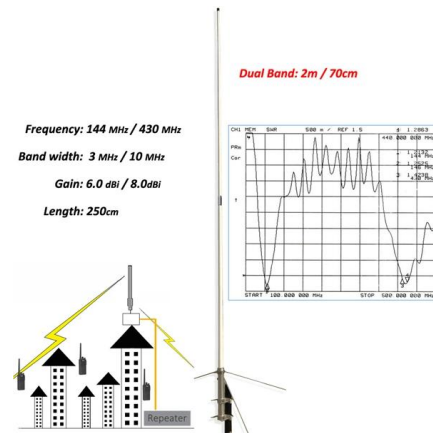


QA/QC Inspection Checklist for Cable Trays Ladders etc

QA/QC Inspection Checklist for Cable Trays Ladders etc by HSE DOCUMENTS on September 16, 2020 in Downloads

Cable Tray Installation Checklists

Get the Editable Installation Checklists for Cable Trays, Ladders and Conduits with the Full ITP Template for Construction Sites. Editable MS Word & Excel Files.



Cable Tray Factory Inspection Report

The factory inspection report summarizes the inspection of two cable tray models produced by Shanghai Ludao Electrical Equipment Co., Ltd. for a Bangladesh





Cable Tray Inspection Checklist for Safety and Efficiency

Cable Tray Inspection - Key Technical and Structural Considerations When inspecting cable trays, several technical and structural aspects must be checked to ensure safety, efficiency, and



Cable Tray Systems: Requirements and Best Practices

Comprehensive guide to cable tray systems requirements: tray types, materials, loading, supports, bonding, routing, and best practices for safe electrical cable management.

Telecom Cable Management Trays - Material Receiving Checklist

This article is about Material Receiving Checklist for Telecom Cable Management Trays of Building Telecom Distribution System as per International Codes and standards. Telecom Cable



Inspection Methods for Cable Trays: A Comprehensive

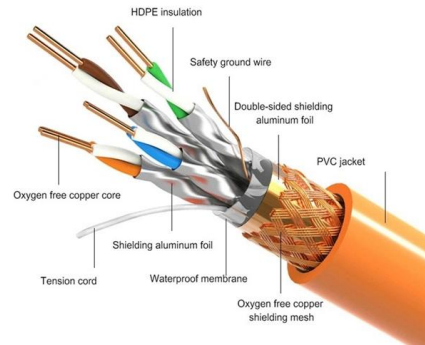
In this detailed guide, we'll explore the essential inspection methods



METHOD STATEMENT FOR Cable tray and trunking system installation

Cable tray and trunking system relevant to this particular section of works will be checked and verified that these are correct type.

PRODUCT DETAILS



Cable Tray & Trunking Installation Checklist

The document is a checklist for installing cable tray and trunking that includes 10 items to verify, such as verifying the materials and sizes match approved

Cable Tray Installation Method Statement

Below is the detailed cable tray installation method statement not only for cable tray but also applicable for GI ladder and trunking for indoor and outdoor applications



Cable Tray Installation Checklists

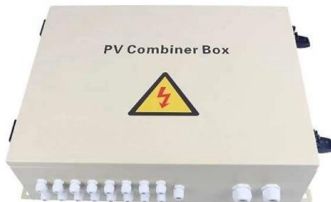
These are the complete quality inspection checklists that include cable tray installation checklists, in addition to conduits and cable ladder installation

Inspection of Cable Tray Support Structures



and Fixings

Cable tray support structures and fixings are a critical component of electrical systems and installations, playing a vital role in maintaining the integrity and safety of these systems. The inspection of these



Saudi Aramco Cable Tray Inspection Guide , PDF

This document outlines inspection responsibilities for cable tray, fittings, and accessories for a project. It includes: 1. Weekly inspections of stored and handled

Inspection of Cable Trays, Installation Instructions Of Cable Tray

Thus while maintenance, installation and inspection of cable trays, the following concerns should be given attention. Cable trays must be properly fitted and supported according to the installation



Cable Tray SHIB NAL

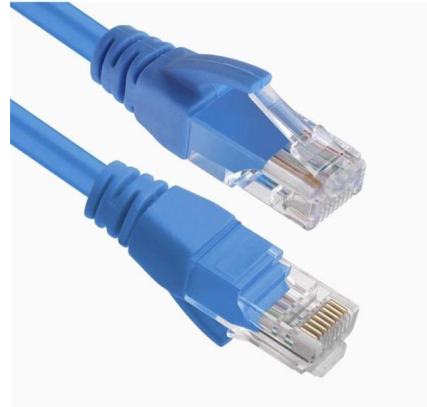
Cable trays are not raceways, but they are treated as a structural component of a facility's electrical system. Cable trays are a part of a planned cable management system to support, route, protect and





Conduit and Cable Tray Inspection Checklist

The document is a checklist for inspecting conduit, trunking, and cable tray



Contact Us

For datasheets, pricing, or custom high-speed optical interconnect solutions, please visit:
<https://www.syropy.com.pl>