

# **Industrial switches can be fixed**





## Overview

---

In most cases, a limit switch is replaced rather than repaired, especially in industrial environments where reliability and downtime are critical. While some high-end modular switches allow for actuator or contact block replacement, many are sealed or riveted and not designed for. When problems arise, it's crucial to have a systematic approach to quickly diagnose and resolve issues. As the linchpin of connectivity, they support a myriad of devices and systems that are integral to the day-to-day functioning of industrial processes.



## Industrial switches can be fixed

---



### Common Switch Issues

This guide explores the most common switch issues, the symptoms that hint at trouble, and a structured troubleshooting methodology that works in both IT and OT environments.

### Industrial Switches for Modern Manufacturing and

Discover how industrial switches support modern manufacturing and automation with durability, flexibility, quality of service, and robust cybersecurity.



### Industrial Switches: Everything You Need to Know

Unmanaged industrial switches operate without the need for manual configuration or management. They offer plug-and-play connectivity and fixed configuration that

### Pressure Switch Troubleshooting and Maintenance in

Learn systematic troubleshooting and maintenance steps for industrial pressure switches, ensuring safety, reliability, and optimal performance in



### How to Install Industrial Switches: A Comprehensive Guide

Industrial switches are vital for robust network connectivity in industrial environments. Proper installation ensures optimal performance and network efficiency. This



### Understanding the Role of an Industrial Network Switch

Explore the essential role of industrial network switches in modern infrastructure. Discover unmanaged and managed Ethernet switch solutions,



### FS Community

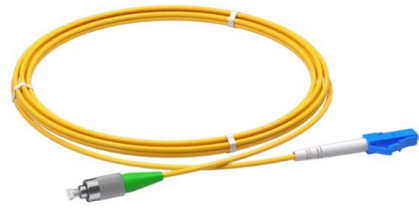
Hier sollte eine Beschreibung angezeigt werden, diese Seite lässt dies jedoch nicht zu.





## Can A Limit Switch Be Repaired, Or Does It Need Replacement?

In most cases, a limit switch is replaced rather than repaired, especially in industrial environments where reliability and downtime are critical. While some high-end modular switches allow for actuator or



## How do I troubleshoot an industrial switch?

Troubleshooting an industrial switch involves a step-by-step process that includes checking physical connections, configuration settings, logs, and network performance.

## Industrial Switch: Advantages and Different Types

Industrial Ethernet switches provide critical services for secure networks in harsh environments. This article explains their key advantages and



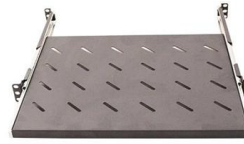
## Advancing personnel and equipment protection with safety switches

Designed to enhance personnel safety and protect equipment in commercial and industrial applications, Eaton's safety switches with shunt trip technology can be operated electrically and remotely--



## Essential Maintenance Tips for Industrial Switches

Learn key maintenance practices for industrial switches to ensure network stability and reliability.



Webit Cabling



## What Are the Most Common Industrial Push Button

Learn about the most common industrial push button switch failures along with straightforward solutions to fix them and key preventive maintenance steps to

## Industrial Switches , Types, Applications, and Benefits in Automation

Learn about industrial switches, their key types, uses, and benefits in automation, from enhancing control to boosting efficiency and safety in industrial systems.



## How to pick the right Industrial Ethernet Switch for

Industrial Ethernet switches are comprised of managed and unmanaged switches with Gigabit, PoE, and various industry certifications. Featured industrial-grade





## A Quick Guide to Industrial Switches

Industrial switches play a crucial role in various industrial applications to help your network stay up and keep it running even in the least favorable



## What is an industrial switch and its applications

What is an industrial switch? Today industrial switch plays a significantly important role in various industries such as energy, environmental protection,

## How to Fix a Push Button Panel: Expert Repair Tips

Step-by-Step Procedures for Replacing Industrial Push Button Switches Replacing a faulty switch involves choosing the correct new unit, gathering tools, desoldering



## Top 5 Causes of Switch Gear Failure and How to Prevent

Switchgear is indispensable in managing electrical power distribution and ensuring safety in various industrial applications. With





## Troubleshooting and maintenance skills of industrial switches in

Industrial switches play a crucial role in intelligent manufacturing. By understanding the troubleshooting steps and maintenance techniques, we can better ensure the smooth operation of these critical devices.



### Common Switch Issues

Troubleshooting Common Switch Issues in Industrial and Enterprise Networks Switches are the silent workhorses of modern networks --routing traffic, connecting endpoints, and managing Layer 2



## Industrial Switch Maintenance & Upgrade



### Back to the Basics: Understanding Industrial Buttons

Industrial Switches and Pushbuttons In our modern daily lives, we all interact with buttons and switches. The switches on keyboards, the light switch in

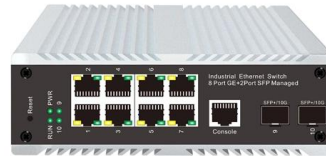


### Network Switch Troubleshooting Guide: Common

A comprehensive switch troubleshooting from the physical layer to the data link layer to the network layer to find out why your network switch is not



This article explores the causes and consequences of switch malfunctions and failures, as well as the best practices for maintaining and

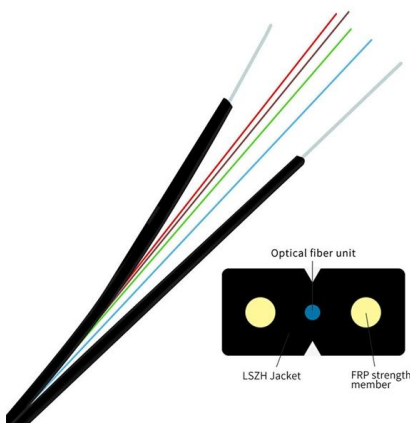


### Industrial Switch: Understanding Industrial Ethernet

An industrial Ethernet switch is a type of network switch designed to operate in harsh industrial environments. Oil rigs, railways, manufacturing plants, and similar

### Industrial Switches Explained: How They Power Modern

Modern-day efficient industrial switches ensure maximum online uptime, uninterrupted data flow and minimal downtime. Whether scaling your operations,



### What is an industrial switch

Industrial switches can operate stably in harsh industrial environments and have good anti-interference performance against electromagnetic interference, temperature changes, and vibration.



## Switches Preventive Maintenance , Vertiv Standby

Automatic transfer switches are a great solution during fault or outage situations, seamlessly shifting loads from normal supply to standby power. Regular



## Troubleshooting Your Industrial Network

Instead of being physically separated from another broadcast domain by the interconnection of a different set of hubs, bridges, and switches attached to a router port, it is now possible to logically

## Contact Us

---

For datasheets, pricing, or custom high-speed optical interconnect solutions, please visit:  
<https://www.syropy.com.pl>