

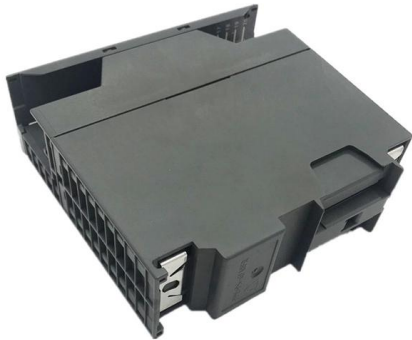
# **Industrial-grade 16-port gigabit switch**





## Industrial-grade 16-port gigabit switch

---

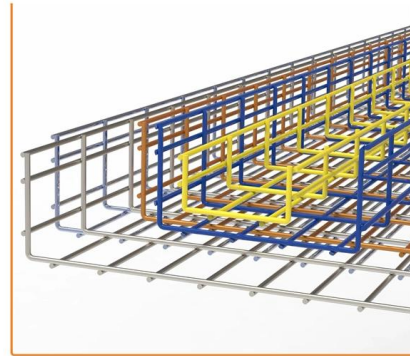


### **ZEBRONICS 16-Port Full Gigabit PoE Surveillance Switch**

The ZEBRONICS 16CH Full Gigabit PoE Switch is a powerful, efficient, and reliable networking solution that combines high-speed performance, smart power distribution, and industrial-grade

### **Ethernet Switch 5 Ports 118x80x30mm 100Mbps Iron on OnBuy**

TP-Link TL-SG105 5 port Gigabit Switch. metal TL-SG105 £25.93 FREE Delivery 2X 2 Port POE Repeater IP66 10/100Mbps 1 to PoE Extender with IEEE802.3Af/At 48V Outdoor for Switch Camera



### **What is the typical cost of industrial-grade switches?**

The cost of industrial-grade switches can vary widely based on several factors, such as the number of ports, port types (Ethernet, fiber, PoE), data speed (Fast

### **16-Port Industrial Network Switch, Gigabit, Unmanaged,**

Unmanaged 16-port Gigabit Ethernet switch is designed to expand connectivity in



### **Network Switches , PoE, PoE+ & PoE++ for Enterprise**

PoE, PoE+, and PoE++ network switches for enterprise and hardened applications. Managed and unmanaged options in 4, 8, 16, 24, and 48-port configurations.



### **IG5-08164FTE : Industrial Ethernet Switch 28-ports : Managed SFP+**

EtherWAN IG5-08164FTE industrial ethernet switch features 8 gigabit, 16 SFP gigabit ports, 4x10G SFP+, layer 2/3 management, & rugged IP40 protection.

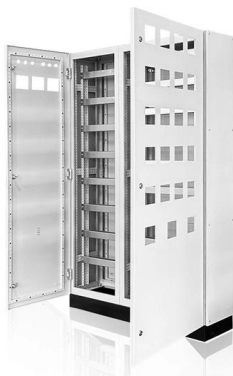
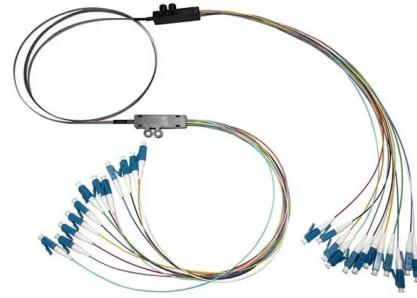


### **IGX-2872 28-Port L2 Plus Managed Gigabit Fiber Industrial Switch, 4**

Fiber-Rich Industrial Aggregation: 28-port L2+ managed design with 8 Gigabit SFP/RJ45 combo, 16 100/1000Base-X SFP and 4 1G/2.5G/10G SFP+ uplink ports for flexible fiber-centric topologies.



IGS-5416P Industrial 16-Port Gigabit PoE+ Web Managed Switch with 8 PoE+ Ports and 4 SFP Slots Explore



### 16-Port Industrial Gigabit DIN-Rail Switch

This Industrial switch features copper Gigabit ports for high-speed device connections, and Gigabit SFP slots that support 1000Base-FX modules for long

### 5-Port Gigabit Ethernet Switch , Industrial LNK-IMC005G

Mini Industrial 5-Port Gigabit Ethernet Switch 12-48V DC IP40 - LNK-IMC005G Overview The LNK-IMC005G Series is a compact and rugged 5-port industrial



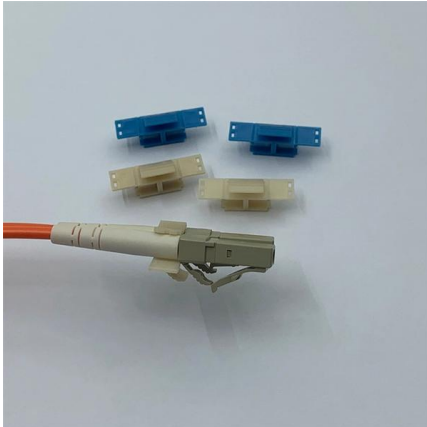
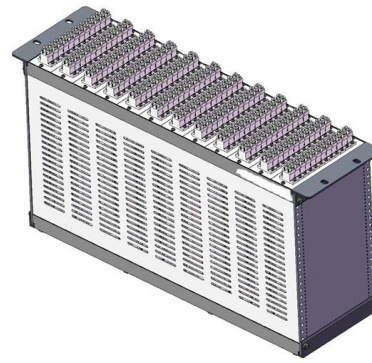
### 16 Port Switch -- Scalable Ethernet Solutions for SMBs

Build a scalable wired network with our 16 port switches. Pick from managed and unmanaged options with PoE and SFP features. Shop now and simplify your



## Fiber Optic Network Switches

Our Ethernet network switches with fiber ports comes in managed or unmanaged formats combined with both Industrial and Commercial grades. Utilize our PoE

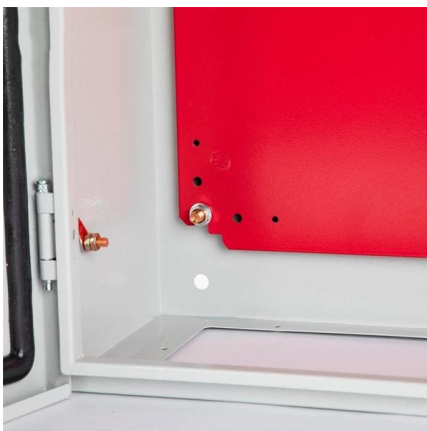


### **IES5100-16TS, 16-Port Gigabit Ethernet L2+ Managed**

The IES5100-16TS features 16x 10/100/1000BASE-T ports, 4x 1G SFP ports, 4 x 10G SFP+ ports, which is designed especially for a broad spectrum of industrial and

### **CloudEngine S5731I-L Series Industrial Switches (DIN)**

CloudEngine S5731I-L series industrial switches (DIN rail-mounted) are Huawei's next-generation industrial switches. They support flexible all-gigabit access and



### **DIGITUS 16 Port Gigabit Ethernet Network Switch, Industrial,**

Robust and durable industrial solution for high temperature ranges and rough industrial environments - redundant power supply possible. The DIGITUS® Industrial Gigabit Switch was designed for harsh

### **N-Tron**



N-Tron switches enable industrial-grade networking, often used where demands for quality and ruggedness are high.



### **Arista CCS-710HXP-20TNH-4S , 710HXP 16-Port Gigabit PoE+ Industrial**

The Arista CCS-710HXP-20TNH-4S is a ruggedized industrial switch designed for harsh environments requiring extended temperature operation from -40°C to 75°C. Featuring 16x 1G PoE ports, 4x 5

### **16-Port Industrial Gigabit PoE+ Managed Ethernet Switch**

PG5-1600 16-Port Industrial Gigabit PoE+ Managed Ethernet Switch #100Mbps Copper #1000Mbps Copper #PoE



### **IES3110-16TF, 16-Port Gigabit Ethernet L2 Managed Industrial**

This industrial managed switch supports enhanced L2 functions such as 802.1Q VLAN, port-based VLAN, QoS, IGMP Snooping, and LACP link aggregation, meeting the requirements of many



## IGS-1600T

Suitable for buildings where security is strictly enforced, the IGS-1600T, with sixteen Gigabit Ethernet Switch interfaces, can easily build an infrastructure with an IP phone system, IP surveillance system,



## Sixnet® SLX-16MS-1 Managed 16-port Industrial

The Sixnet® 16-port Managed Industrial Ethernet Switch enables fast Ethernet connectivity for industrial equipment in extreme industrial settings. Rugged and

## Contact Us

For datasheets, pricing, or custom high-speed optical interconnect solutions, please visit:  
<https://www.syropy.com.pl>