

Indoor Design Light Alarm Module





Indoor Design Light Alarm Module



nLight® Networked Lighting Controls Platform

The nLight networked lighting control system seamlessly integrates to third-party devices through the nLight AIR System Input Device (rSI). Reduce rewiring and

Design and Implementation of a Low-Cost Intrusion Detection System

This paper presents the design and implementation of a low-cost, Arduino- based intrusion detection system that utilizes a Light Dependent Resistor (LDR) to detect ambient light changes indicative of



Duinosistant: a complete, easy to use Room Automation system

Made for a room (not a home) this includes a security system and other easy-to-use features - a cheaper alternative to professional standards! This project is a room automation system - like a home

Smart lights 101: everything you need to know to level

Smart Home Smart Lights Smart lights 101: everything you need to know to level up your lighting Features By Alistair Charlton published July 1, 2025



Self-contained luminaires and monitoring

Emergency lighting design must be based on the worst ambi-ent conditions for the total expected life cycle, e.g. greatest glare effect and lowest luminous flux (recessed luminaires, electronic ballasts with



How to Design Fire Alarm System , 8 Easy Steps (2026)

This guide on how to design fire alarm system will walk you through the key components and steps required to design a comprehensive fire alarm



Light Sensor & Night Alert System using Arduino

About A smart and simple project using a Light Dependent Resistor (LDR) to detect ambient light level and automatically activate warning LEDs based on the



DIY Motion-Activated Lights: Arduino & PIR Sensor Project

In this project, we will see the Automatic Room Lights using Arduino and PIR Sensor, where the lights in the room will automatically turn ON and OFF

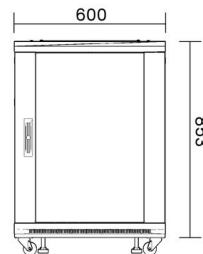


3 Accurate Infrared Intruder Alarm Circuits using

In this post I have explained 3 simple yet accurate infrared intruder alarm circuits using an infrared transmitter and an infrared receiver module. The

DIY Alarm Circuit Projects , PCB Design & Schematics

? Learn how to build a simple PCB alarm circuit for enhanced security! Step-by-step guide, component list & schematic diagrams to help you create a



Ignition Alarm Notification Module , Send and Manage

Send and manage industrial alarm notifications with ease. Ignition with the Alarm Notification Module delivers a powerful and scalable alarming system.



Smart Home technology made by Gira

Smart Homes connect lighting, blinds, heating, and even household appliances so you can control everything with one device. This allows



(PDF) Design and Research of Indoor Lighting Control System Based

This research focuses on design of smart indoor lighting system analyzing multiple zones with variable desired lighting conditions, to enhance user comfort and energy consumption.

Design of Room Safety Alarm System based on MCU

Using Proteus 8.0 simulation, build single-chip STC89C52 module, key circuit module, display circuit module, each sensor module, alarm circuit module, and connect them according to the circuit



Weatherproof Signalling Stack Lights ML70

Compact and ready for connection stack light with a diameter of 70 mm. Application: Indoors and Outdoors (IP65) LED technology Power supply 24 V AC/DC Piezo



Indoor LED Module

Indoor LED module installation: refers to the LED module fixed in the cabinet or structural framework, by connecting the power supply, signal line, control system,

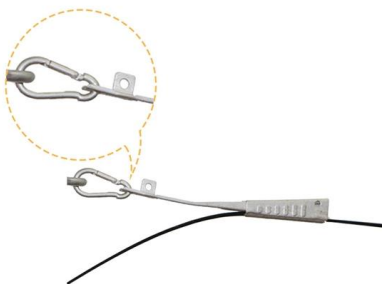


Design of Room Safety Alarm System based on MCU

2. Overall system design The design includes hardware module and software module. The design of hardware module includes STC89C52 MCU, DS18B20 temperature sensor, MQ-2 smoke sensor,

Flexible Indoor LED Modules - Redefining Displays !

Indoor LED module is a small display unit based on LED light source, which is used to build indoor display system. Each module contains small LED



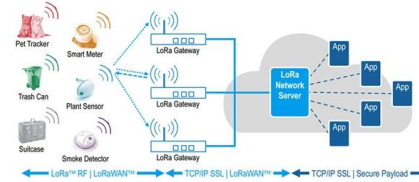
Design and Implementation of an Arduino Based Light

Abstract This paper is based on design and implementation of an Arduino based alarm system which is capable of monitoring the illumination of the surrounding



Design your own alarm system. Alarm kits, security

Indication lights can be installed outside and inside the premises. These indication lights will show the alarm status of the outdoor protection and allow the user to

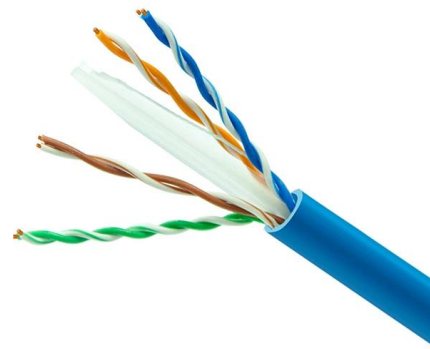


Light Sensor Alarm: DIY with LDR and Buzzer

When the light falls on the LDR, it detects the change in light intensity and triggers the buzzer to start making a sound.

Innovative Intrusion Detection Alarm System Design

Explore advanced security systems design and alarm development for intrusion detection using business intelligence and analytics.



Research and Design of Distributed Fire Alarm System of Indoor

In order to comprehensively improve the sensitivity of fire warning and effectively shorten the warning time, this paper proposes and implements an indoor distributed fire alarm system based on low p



Design of Indoor Intelligent Alarm System Based on STM32

Nowadays, if indoor accidents are not discovered in time, they are likely to cause major casualties. For example, fires, toxic gases, water leaks in the house, etc. will cause a large degree of damage to the



Contact Us

For datasheets, pricing, or custom high-speed optical interconnect solutions, please visit:

<https://www.syropy.com.pl>