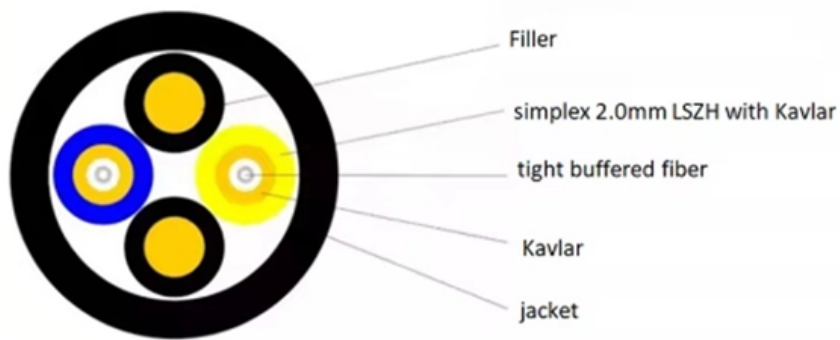


# Indoor 8-core fiber optic terminal box





## Indoor 8-core fiber optic terminal box

---

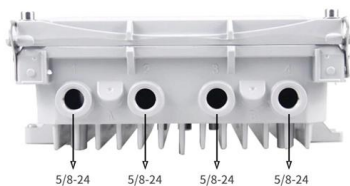
### 8 Core NAP ODP FTB FTTH 3 Inlet Fiber Access



8 port Optical Fiber Distribution Box Indoor / Outdoor Wall Mounted comes with 2 fiber cable ports + 8 ports for drop ftth fiber optic cables. It can install 8pcs

### Indoor/Outdoor 8 Core Fiber Optic Termination Box

Our FAT-8T 8 core fiber optic termination box brings you seamless integration and efficiency to FTTx network systems. With the capacity to

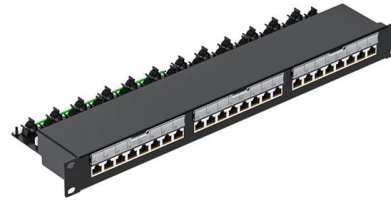


### 8 Cores Wall Mounted Fiber Optic Terminal Box As

The FS/WLA-SC8 we provide is a kind of high quality, micro sized optical fiber termination box made of quality cold-rolled steel sheet and undergoes static plastic spraying treatment, which can be used to

### Ultra-Slim 2 Port Fiber Wall Socket, Low Profile Termination Box

The compact fiber wall plate supports mechanical/fusion splicing, termination, and cable management. It is ideally suited for wall-mounted, surface-mounted, or desktop applications in residential and small



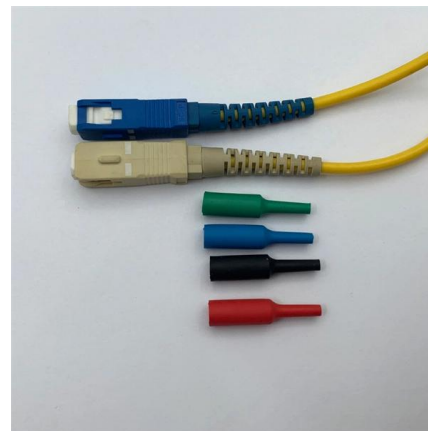
### **8 Core NAP ODP FTB FTTH 3 Inlet Fiber Access**

The 8 port Fiber Distribution Box is sturdy in structure, lightweight in size, and easy to install. It can be installed on walls or utility poles, and its waterproof cover



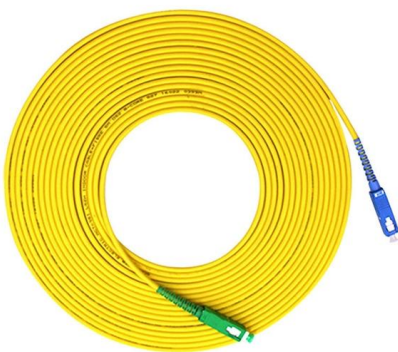
### **HUAWEI FTTH 8 Cores Fiber Optic Terminal Box**

Telhua's HUAWEI FTTH 8-core fiber optic terminal box delivers high-density, reliable termination with IP65 protection. Features tool-less installation and meets



### **8 Core Fiber Distribution Box, ABS Wall Mounted Fiber Optic Terminal**

IP65 Waterproof & Dustproof Protection: Constructed from premium ABS material, this fiber optic terminal box delivers reliable IP65-rated protection against water, dust, and aging, ensuring stable





### **Indoor Metal Fiber Terminal Box With 8 Adapter Ports, 8**

The metal fiber enclosure is perfect for the end-users' termination in residential



### **Telecom Indoor 8 Core Optical Fiber Distribution Box**

FTB Series FTTH customer terminal box is used in the end termination of residential buildings and villas, to fix and splice with pigtailed. We offer the full set of plastic

### **Telecom Indoor 8 Core Optical Fiber Distribution Box**

We offer the full set of plastic terminal box as distribution box, including 0.9um pigtail and related adapter. 8 Fiber wall mounted terminal box can install with 8 pieces



### **8-fiber Optic Terminal Box, SC Simplex/LC Duplex, IP55, Wall/Pole**

8-fiber Optic Terminal Box, SC Simplex/LC Duplex, IP55, Wall/Pole Mount, Indoor and Outdoor FTB-SC8-WOPA type fiber optic terminal box is designed for FTTx application, which is cable to meet at



### 4 Core Wall Mount Fiber Optic Terminal Box for FTTH

The 4 Core Wall Mount Fiber Terminal Box provides secure splicing, termination, and IP65 waterproof protection. Ideal for indoor/outdoor FTTH



### 1 Core Fiber Optic Distribution Box

This fiber optic distribution box serves as a termination point for feeder cables to connect with drop cables in FTTH communication network systems. It integrates

### Discover the 8 Core Fiber Optic Terminal Box

The 8 core fiber optic terminal box offers a high capacity solution for network installations. With its ability to accommodate up to 8 fiber optic cables, it



### Indoor 8 Core Fiber Distribution Box for Optical Cable , CRXCONEC

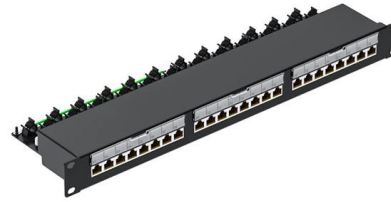
The 8-core fiber distribution box features a windowed design, suitable for installers performing fiber maintenance without removing the entire box cover. They only need to unscrew and open the





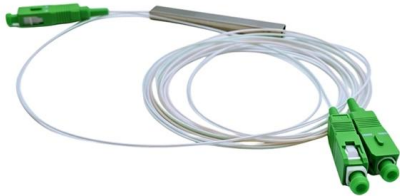
## Fiber Optic Cable, Clamps, Boxes, for FTTH

JERA LINE-China Factory produce high-quality fiber optic cables, fiber cable clamps, and fiber optic boxes for outdoor & Indoor FTTH. ISO 9001 certified.



### HUAWEI FTTH 8 Cores Fiber Optic Terminal Box

Maximize rack space utilization with our compact 8-core design. Each unit supports high-fiber-count deployments while maintaining accessible organization for future



### Indoor FTTH Fiber Optic Termination box With 2 SC

The fiber wall outlet is widely used in residential areas, business buildings, and villas, facilitating the connection of 2 fibers to the passive optical network. The fttth



### Waterproof IP68 1 in/8 Ports out Terminal Junction Box

Features: Pre-installed fiber optic adapters  
Waterproof and durable design (IP68-rated)  
Integrated splice and cable management  
Flexible fiber capacity (supports





### **8 Port Fiber Access Terminal (FAT) with Mid-span Entry**

The 8 port termination box supports 2 entry cables with Dia  $\leq$  12mm, which enables optical fiber cable distribution and 1:8 optical signal splitting, support 8 cores Splice .



### **MINIYX Waterproof Fiber Optical Terminal Box Practical 12 Core Fiber**

WUZIA Other. Cables, pigtails, and patch cords pass through their own paths without interfering with each other, and the box type SC/FC/PLC adapter is installed. Used in the integration of the incoming

### **Premium 8-Core Fiber Optic Terminal Box For High**

BD-FTB-8B fiber terminal box is able to hold up to 8 subscribers. The fiber optic terminal box is used as a termination point for the feeder cable to connect with



### **HTB8007-8C 8-Core Indoor Fiber Optic Terminal Box -**

The 8 Core Indoor Fiber Terminal Box is a durable and versatile



### **HTB8007 4-Core Indoor Fiber Optic Terminal Box - for**

Known as an FTTH faceplate, this terminal box connects drop cables to ONU devices through its fiber ports, supporting a maximum of 4 fiber



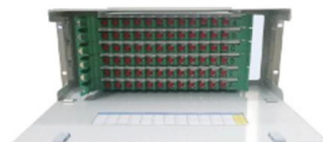
### **HTB8007-8C 8-Core Indoor Fiber Optic Terminal Box -**

The Indoor 8-Core Fiber Terminal Box is a durable and versatile solution made from high-grade ABS. Ideal for indoor installations with reliable



### **4 Core PLC/SC Adapter Fiber Optic Distribution Box**

The Fiber Optic Distribution Box is a multifunctional termination point to connect feeder cables with drop cables in FTTH communication network



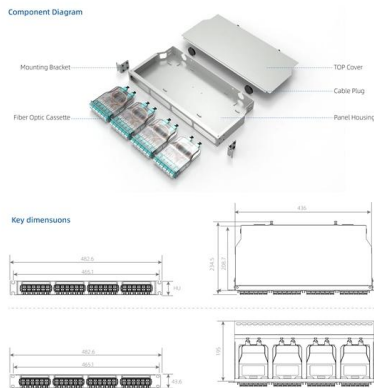
### **8 Cores Indoor Fiber splice terminal box , Fiberlink**

8 Cores Indoor Fiber splice terminal box is specifically designed to be installed on each level of a Multi-Dwelling Unit (MDU) for fiber to the home (FTTH) applications.



## Indoor 8 Core Fiber Distribution Box for Optical Cable , CRXCONEC

Ideal for last mile FTTH deployments, this versatile 8 core fiber distribution box is perfectly suited for small-scale installations in apartments, residential, or commercial buildings, enhancing floor



Fast shipment in stock Default white and black, contact customer service for notes

4U standard model



## 8 Port 16 Core FTTH Box Fiber Distribution Box Terminal Outdoor

Fiber optic distribution box Type FTTH Use 5G, Wireless Lan, Wired LAN Network 16 core Model Number Unionfiber Brand Name Guangdong, China Place of Origin Warranty Time: 3 Years

## Contact Us

For datasheets, pricing, or custom high-speed optical interconnect solutions, please visit:  
<https://www.syropy.com.pl>