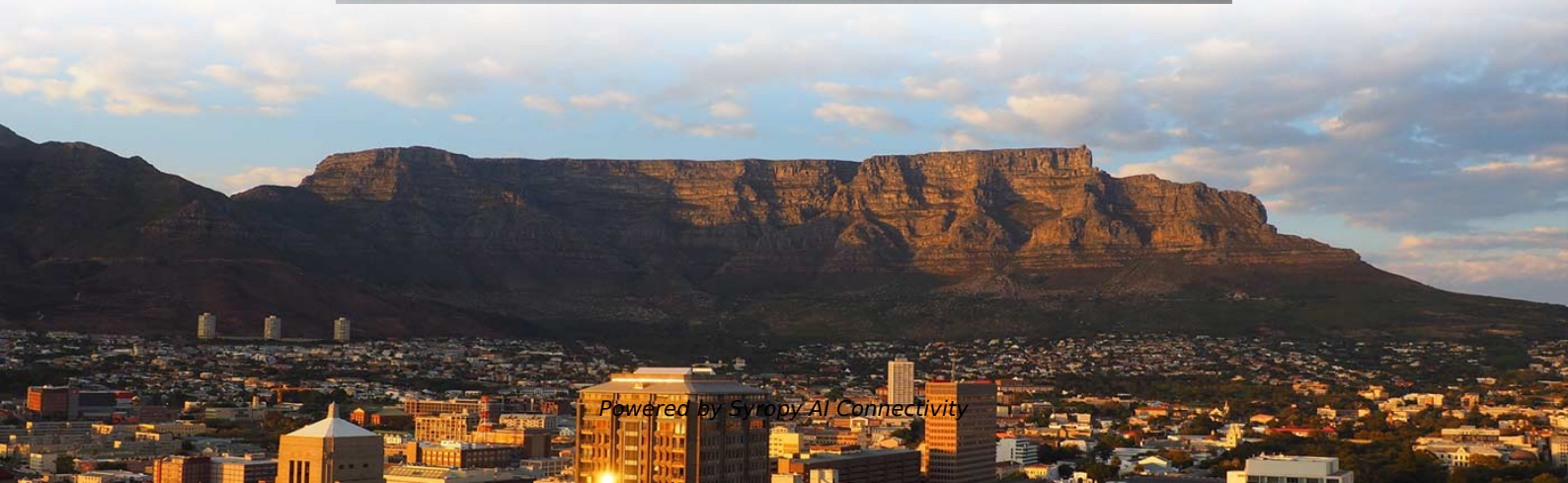


Increase the height of the wiring strip in the distribution box





Overview

7 meters) high makes it easily accessible without the need to bend or stretch excessively. Choose the right box based on environment (indoor/outdoor), load capacity, and durability. The proper installation of a distribution box involves placing it at the right height to ensure safety and convenience.



Increase the height of the wiring strip in the distribution box



What is the Ideal Installation Height for a Distribution Box

Install a distribution box at 4.5 to 5.5 feet high for safety, accessibility, and compliance. This height ensures easy use and protection from hazards.

Cable Distribution Box Layout: 10 Industrial Strategies

The installation height of the distribution electrical box should be controlled at 1.2~ 1.5 meters, which is convenient for operation and maintenance. At least 1 meter of space should be



Requirements And Specifications For Installation Of

The bottom edge of the distribution box is usually between 1.5 meters and 1.8 meters above the ground, which is convenient for operation and



How to Install a Distribution Box--A Comprehensive

The best height for installing residential distribution boxes is 1.5 meters above the ground, while for industrial distribution boxes, the height

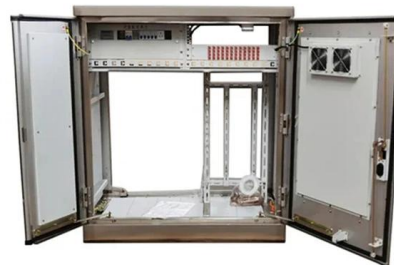


How to determine the size, installation method and

The height is the height of the switch plus the height of the incoming line switch plus 40 mm, and the depth is the depth of the switch plus 10 mm.

How to Wire a Home Distribution Box

How to Wire a Home Distribution Box - Step-by-Step , Distribution DB box wiring diagram
Welcome to our channel! In this video, we'll walk you through



Requirements And Specifications For Installation Of

Installation height and fixing method?: The bottom edge of the distribution box is usually between 1.5 meters and 1.8 meters above the ground,



How to determine the size, installation method and

(1) Wiring method of distribution box 1)
Generally, the incoming line of power distribution box adopts five wire system, that is, a, B and C three-way phase line

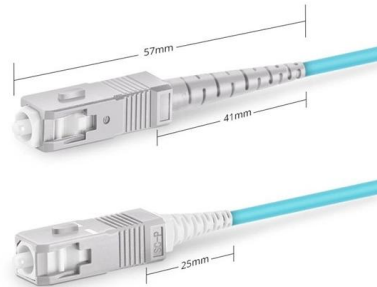


How to Improve the Installation Quality of Distribution Boxes

Learn key methods to enhance distribution box installation quality, including location, height, wiring, and safety compliance.

How to Install a Distribution Box in Singapore?

Guide to distribution box installation in Singapore, covering planning, wiring, circuit setup and safety. Ensure proper setup or consult a licensed electrician.



Simplex SC UPC



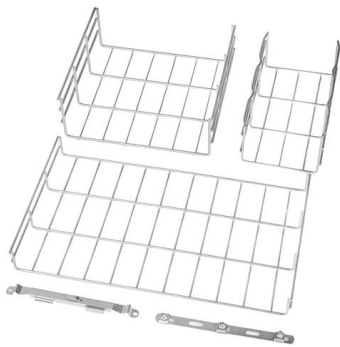
Electric Panel Installation Method Statement

It outlines 4 steps: 1) Pre-installation preparation including reviewing plans and ensuring safety, 2) Mounting panels and running wiring, 3) Installing circuit



Distribution Box Installation: A Complete Guide to Safe

Ensure the box is mounted at a comfortable height and securely fastened to the wall studs.
Step 4: Connect the Main Power Cable Route the main power cable (often

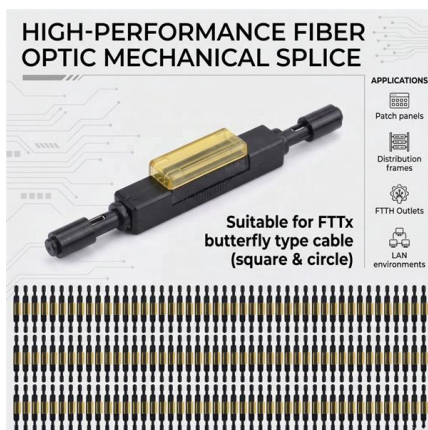


Electric distribution box wiring tutorial (very simple and practical)

In this video, we are going to wire a power distribution box. This small box has an rccb switch that protects the outputs from electric shock and also has a miniature switch that protects the

How to Wire a Home Distribution Box

Welcome to our channel! In this video, we'll walk you through the process of wiring a home distribution box with a detailed connection diagram. Whether you're an electrician or a DIY enthusiast



Understanding Distribution Boxes: A Comprehensive Guide

Learn what a distribution box is, its types, and how to choose the right one for your project. Includes clear examples and expert tips.



Installation points of household distribution box

The wiring in the distribution box shall be regular and neat, and the terminal screws shall be fastened. 6. The incoming lines of each circuit shall be of corresponding

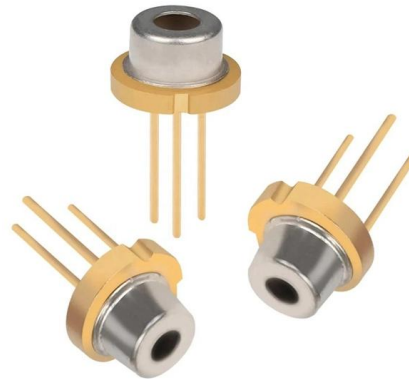


Distribution boards components

Distribution boards (generally only one in residential premises) usually include the meter (s) and in some cases (notably where the supply utilities impose a TT earthing system and/or tariff

Distribution Boards

Distribution boards, often referred to as electrical panels or breaker boxes, serve as the nerve center of any electrical system. Here we explore the crucial parts of a distribution board and gain insights into



Distribution Box Installation: A Complete Guide to Safe

Mount the distribution box in a convenient, accessible location that complies with local electrical codes. Typically, this is in a basement, utility room, or garage.



How to Install a Distribution Box--A Comprehensive

Whether you are an electrical contractor or a construction brigade, knowing how to properly and safely install distribution boxes is the basis of



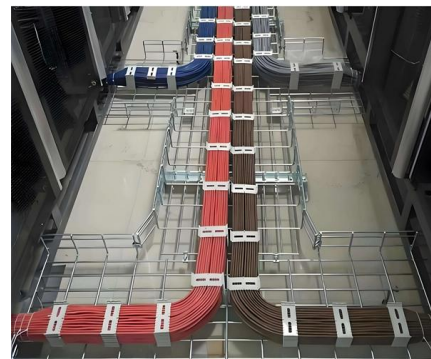
on video How to Wire a Home Distribution Box

How to Wire a Home Distribution Box - Step-by-Step , Distribution DB box wiring diagram
Welcome to our channel! In this video, we'll walk you through the



The Complete Guide to Distribution Box: Installation, Types & More

Blog The Complete Guide to Distribution Box: Installation, Types & More By Admin Aug 2, 2025
No Comments # distribution box Introduction
Electrical systems power our homes, offices, and



News

While a common recommendation is to position the bottom edge of the distribution cabinet approximately 1.4 meters above the ground, this height may vary based on the convenience of



Standard Heights for Electrical Switches

This document provides standard heights for various electrical switch boards and fittings in different rooms of a house. It lists the ideal heights in millimeters from



Contact Us

For datasheets, pricing, or custom high-speed optical interconnect solutions, please visit:
<https://www.syropy.com.pl>