

Imported Fiber Optic Cable Junction Box 24 Cores





Imported Fiber Optic Cable Junction Box 24 Cores

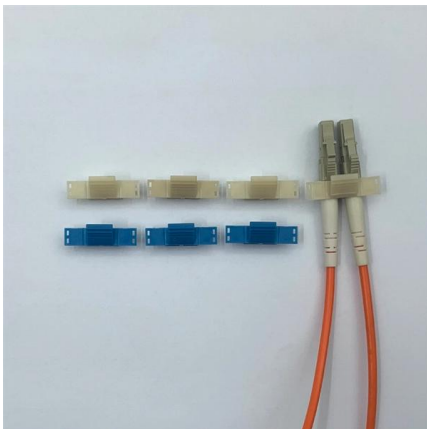


Optic Terminal Box, 24 Core 24 Port Fiber Optic Splice

Specification: Item Type: Optical Fiber Terminal Box Connector: SCPort: 24Material Thickness: 0.7 mm-1.0 mm Ambient Temperature: -25 ?~40

24 Ports Drop cable 96 cores fiber optic splice splitter

24 Ports FTTH Drop Cable Fiber Optic Splice Splitter Closure 96Cores Pass Through PP Black 3M FTTH drop cable fiber optic splice & splitter closure



Feiboer Junction Box

Junction Box Dome Type 24 core 48 core PP material Fiber Optic Closure enclosure 2 in 2 out mechanical seal Joint closure

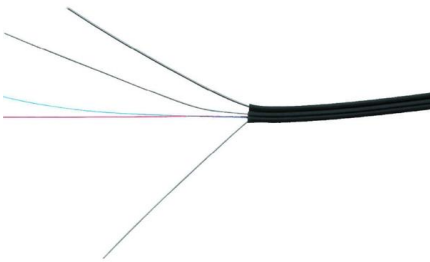
12-24core fiber junction box fiber optic splice closure

Aerial 12 24 Core PP ABS Material Junction Box Fiber optic splicing box is one of the most important types of equipment for user access points, and junction box fiber



Premium-Line 24 ports Wall Mounted Fiber Optic Box

Premium Line 24 ports wall mount fiber optic box is used for the direct termination of fibers. Box include two separate sections.



24 Port Fiber Distribution Box, Blockless Splitter Ready

24 ports fiber optic splitter distribution box is used for feeder cable to connect with drop cable in fttb communication network.



24 Ports 96 Cores PP Drop Cable IP68 Wall Mounted

24 Ports 96 Cores PP Drop Cable IP68 Wall Mounted Fiber Optic Junction Box Inline Closure FDB0224F is designed to seal without screws and buckles. The compact





24 Core Fiber Optic Termination Box/ Junction Box

This box is used as a termination point for the feeder cable to



24 Core FTTH IP65 Reinforced ABS Fiber Optic

Applications The Fiber Optic Distribution Box is ideal for a wide range of fiber optic network scenarios, including: FTTH Network Deployments: Serves

24 Core Joint Box High Quality FTTH Fiber Splice Closure ONU

Whether used in telecommunications, FTTH, enterprise networks, or outside plant installations, this fiber optic junction box ensures the integrity and performance of fiber connections, contributing to the



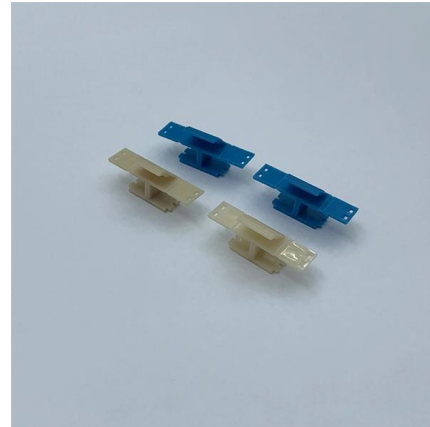
24 Cores Termination Box for Fiber Optics

The 24 Cores Termination Box is a reliable and cost-effective solution for fiber optic cable splicing and termination. It is designed to protect fiber optic cables from the



SJ-ODB-M15 Fiber Optic Junction Box 48 Cores

SJ-ODB-M15 fiber optic junction box 48 cores is designed for cable management, it provides protection for fiber optic cables and easy installation. With the

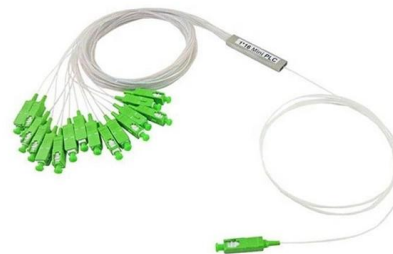


12 Cores Rack Mounted Fiber Optic Terminal Box As

Buy high quality 12 Cores Rack Mounted Fiber Optic Terminal Box As distribution box FS-JJ/SC24-12C cables management from China Fiber Termination Box supplier with free shipping to worldwide and

24 Ports Waterproof SC Connector Optical Fiber

SJ-FTTH-SK-24 24 ports waterproof SC connector optical fiber junction box is used for the splicing and interconnection of communication lines. It is waterproof with



Fiber Optic Distribution Inline Joint Enclosure Box 12 24

Fiber Optic Distribution Inline Joint Enclosure Box 12 24 48 96 Cores Junction Box Ip68 Horizontal Splice Closure Weidan Electronics Fiber optic splice closure is



Ficha_AR-DB24P-A

1. DESCRIPTION The equipment is used as a termination point for the feeder cable to connect with drop cable in FTTx communication network system. The fiber splicing, splitting, distribution can be done in



24 Core Fiber Optical Cable Joint Splice Closure

Made from imported PPR reinforced plastics, the box offers high strength, corrosion resistance, a mature structure, reliable sealing, and convenient construction.



24 Cores FTTH Terminal Box Fiber Optic Junction Box

ANF-P2032-24C Distribution box is used as a terminal point for the feeder cable to connect with the drop cable in the FTTX communication system. The fiber fixing, splitting, splicing, and jumper can be done



24 Core Fiber Optic Distribution Box Cabinet, 12 Port

GPDB-S24D plastic fiber cable distribution termination box is used for the





24 core joint box, 24 core joint box Suppliers and Manufacturers at

Utilizing a 24 core joint box offers several advantages, including enhanced protection of fiber optic connections, organization of fiber splices, and the facilitation of easier repairs and upgrades.



Vertical Type Fiber Optic Splice Closure Joint Box 24 48



Can effectively prevent the optic fibers from the influence of outdoor environment. it can be applied in overhead, wall mounting or directly buried.,Duct.

SMC 24 Cores Fiber Optic Termination Box , FTTH

The SJ-ODB-24-SMC is a 24 cores fiber optic termination box designed for efficient fiber optic cable management in both indoor and outdoor applications. This



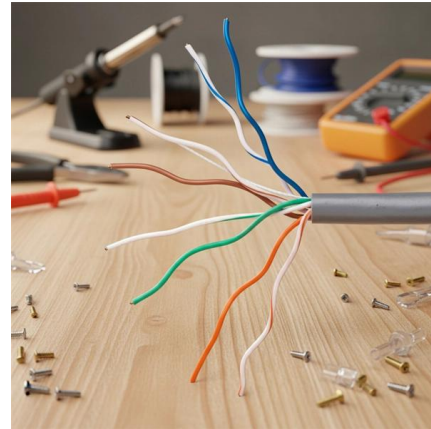
24 core SC24 Type Fiber Terminal Box As distribution box

Buy high quality 24 core SC24 Type Fiber Terminal Box As distribution box for cable management from china fiber termination box supplier with free shipping to worldwide and competitive price.



CORES FIBER

The equipment is used as a termination point for the feeder cable to connect with drop cable in FTTx communication network system. The fiber splicing, splitting, distribution can be done in this box, and



How to Install 24 Core Fiber Junction Box Fiber Splice Closure

Aerial 12 24 Core PP ABS Material junction box fiber optic splice closure is one of the most important equipment for user access points and junction box. The fiber closure is used to protect and



24 Core Joint Box New Original FTTX Fiber Splice

24 Core Joint Box Fiber Optic Splice Closure, also known as a fiber optic junction box or optic joint closure, is a critical component designed for protecting.



24 port SC terminal box fiber optic cable 24 port SC

Electrical Boxes Conduit Fittings: Which can be cleaned and wiped with a damp cloth, protecting the optical fiber from damage, and extend the service life of

8 Port FTTH Fiber Distribution Box with 24



The 8 Port FTTH Fiber Distribution Box with 24 cable outlets can house 4 sc duplex adapters and one 1x8 blockless splitter and supports 24 cores splicing.



24 Core Fiber Optic Distribution Box

JUNPU 24 Core fiber optic distribution box is made with PC+ABS material. The equipment is used as a termination point for the feeder cable to connect with drop cable in FTTx communication network

Contact Us

For datasheets, pricing, or custom high-speed optical interconnect solutions, please visit:
<https://www.syropy.com.pl>