

# **liciiib Explosion-proof Distribution Box Outdoor**





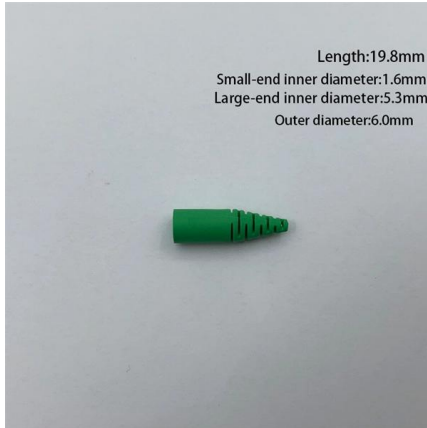
## Overview

---

The shell is made of high-density aluminum alloy one-time molding (maximum size 750mm\*750mm\*480mm), and the surface protection adopts electrostatic spraying epoxy plastic powder process, and the sealing strip between the box body and the box cover can be optionally installed. Flameproof enclosure (Ex d IIB+H2), which can be used as feed distribution equipment in control and distribution system (such as distribution box, switch box of main circuit, control box, terminal box or motor starting box etc. , which were issued prior to the conversion under the name Pepperl+Fuchs GmbH or Pepperl+Fuchs AG, also apply to Pepperl+Fuchs SE. CZ1490 explosion-proof junction box (IIB+H, IIIC/Db), with EU ATEX explosion-proof certification, EAC Customs Union explosion-proof certification and China CCC certification, meets the latest international explosion-proof standards, and can achieve dual explosion-proof protection for both gas and. These are available in a range of materials including Stainless Steel, GRP & Sheet Steel from IP42 (Indoor) to IP 66 (Outdoor) Applications. Extol International are the leading suppliers of Control Panels & Distribution Boards for hazardous areas and explosive atmospheres – a comprehensive range of. Supplier highlights: This seller is both a manufacturer and trader, offering quality control services and the ability to provide full customization, design customization, and sample customization.



## Iciib Explosion-proof Distribution Box Outdoor

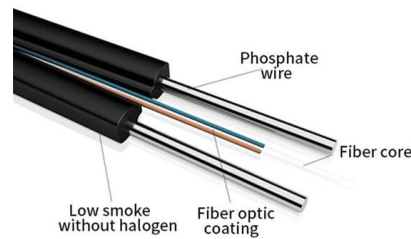


### Marking of electrical explosion protected equipment (ATEX/IECEX)

Marking of electrical explosion protected equipment (ATEX/IECEX) Potentially explosive areas

### Ex Distribution Boards & Enclosures , mlx-ex

Ex distribution boards - Explosion-proof distribution boards designed for Ex and ATEX areas. Customizable, safe, and certified electrical solutions.



### The New Standard in Aluminum Explosion-Proof Solutions , CZ

After years of continuous innovative technology and product development, the products now cover explosion-proof components, explosion-proof electrical equipment, explosion-proof lamps



### Class IIB Explosion-Proof Power Distribution Box Aluminum IP66

Main sales countries include Indonesia, Ghana, and Trinidad and Tobago, with a positive review rate of 87.5%.



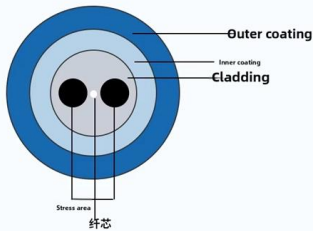
Maintain the performance of polarization maintaining fiber

Accurate refractive index distribution

Good longitudinal uniformity

Optical fiber environment performance is stable

The cross-sectional area has good symmetry



### Outdoor Electrical Distribution Box Specifications: NEC

Complete specification guide for outdoor electrical distribution boxes covering NEC Article 312 requirements, NEMA ratings, sizing calculations, and

### JUNCTION BOXES Ex

JUNCTION BOXES » JB\*\*S/A/G\*\*\*\*\*EX.. SERIES  
Equipment for explosive GAS and DUST atmospheres, having a "high" level of protection, which is not a source of



### Distribution Boxes HRMD92 Series Explosion-proof Distribution Panels

Equipped with specialized hinge structure, which can prevent the flameproof joints from damage when opening and closing the panels, and greatly prolong the service life of box. The boxes can be



### **Explosion Proof Power Distribution Boxes CE92**

Flameproof and explosion proof, these power overhaul distribution boxes are suitable for use in hazardous areas. Specs: Ex mark: Ex de IIC T4 Gb DIP A21 TA, T4



### **Explosion-Proof Distribution Box BX53-IV , Product Center**

BX53-IV Explosion-Proof Distribution Box operates to safely distribute electrical power in risky areas, eliminating ignition threats.

### **SHK Outdoor MCB RCCB Waterproof Distribution Box**

Series:SHK Material:ABS IP Rating:IP65 NEMA Rating:4X Color:Light Grey Application:Outdoor



### **Aluminum Alloy Explosion-Proof Power Distribution Box**

A: For inner box and master carton are made as per international standards, and we can make special designed for you if need. And if necessary, will be packed in



### **HRMD91 Explosion proof Distribution Box (Ex d IIB+H2)**

Equipped with a specialized hinge structure which can prevent damage to the flameproof joints when opening and closing the box and greatly prolongs the

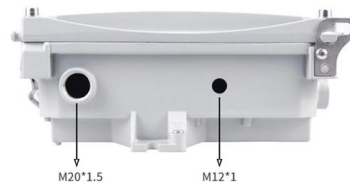


### **DISTRIBUTION BOARDS**

These are available in a range of materials including Stainless Steel, GRP & Sheet Steel from IP42 (Indoor) to IP 66 (Outdoor) Applications.

### **Explosion-Proof Distribution Box BX53-III , Product Center**

BX53-III Explosion-Proof Distribution Box, designed for hazardous environments, regulates power safely to avoid ignition risks.



### **CE92 Explosion-proof power distribution boxes**

CE92 Explosion-proof power distribution boxes  
Category: Atex Junction Boxes



### Explosion-proof distribution board\_Explosion-proof Distribution Box

It is widely used in flammable and explosive gas environment such as oil exploitation, refining, chemical industry, offshore oil platform, oil tanker, etc. It is also used in flammable dust places such as military



### ex.IECEx\_CML\_18.0157X\_0

Product Description The Explosion-proof Distribution Panel HRMD91-enclosure and cover. The cover may be fitted with tempered glass windows, operating mechanisms for switches and breakers,

### Distribution Boxes

Distribution Boxes BXM (D)8061 Explosion proof Distribution Boxes Lighting or Power (Ex db ec IIC)



### Solutions Ex d IIB or CID1 / CIID1 based on Aluminum

For configuration details please contact Customer Service. EC-Type Examination



### **Explosion Proof Illumination Distribution Boxes (With**

Flameproof and explosion proof, these power overhaul distribution boxes are suitable for use in hazardous areas. Specs: Ex mark: Ex de IIC T4 Gb DIP A21 TA,T4



### **IIB+H2 Explosion-proof Terminal Box**

The terminal box is designed with threaded conduit entries, allowing for safe entry and exit of power cables or wires without compromising the explosion-proof

### **Explosion proof Power Distribution Panel Box**

Power Distribution panel box - Hazardous locations for explosive gas mixtures: Zone 1 and Zone 2. Explosive gas mixtures: Class IIA, IIB, and IIC.



### **Explosion proof Distribution Boxes HLDP03-M Malaysia**

Explosion proof Distribution Boxes HLDP03-M Malaysia Zone 1 and Zone 2 Zone 21 and Zone 22 Meet the necessities in the following industries, such as petroleum,



## Explosion-Proof Electrical Distribution Boxes: Applications in

Find out how explosion-proof electrical boxes keep people and equipment safe in risky environments like oil, gas, and chemical industries !

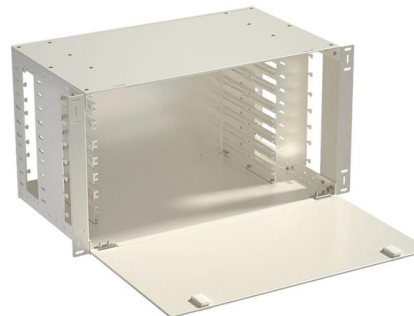


### Outdoor Explosion Proof Distribution Boxes

Outdoor explosion proof distribution boxes are equipped with several features that enhance their functionality and ensure safe operation. Key features include overload protection, short circuit

### Explosion-Proof Distribution Box BX53-T , Product Center

Explosion-Proof Distribution Box BX53-T safely distributes electrical power within hazardous and explosive environments.



### img.bjyyb

Distribution Boxes HRMD91 Series Explosion-proof Distribution Panels Catalogue number logic Explosion protection to -CENELEC -IEC -NEC ·Can be used in Zone 1 and Zone 2 Zone 21 and



## Explosion Proof Distribution Box & Electrical Enclosures

Durable Hexlon Explosion Proof Distribution Boxes and Electrical Enclosures, IECEx and ATEX certified for Zone 1 and Zone 2.



### Distribution Boards

Kabeldon distribution boards are specifically designed for outdoor installations and they come as pre-assembled systems, ready to install. They combine the advantages of the flexible IP-system with

## Contact Us

---

For datasheets, pricing, or custom high-speed optical interconnect solutions, please visit:  
<https://www.syropy.com.pl>