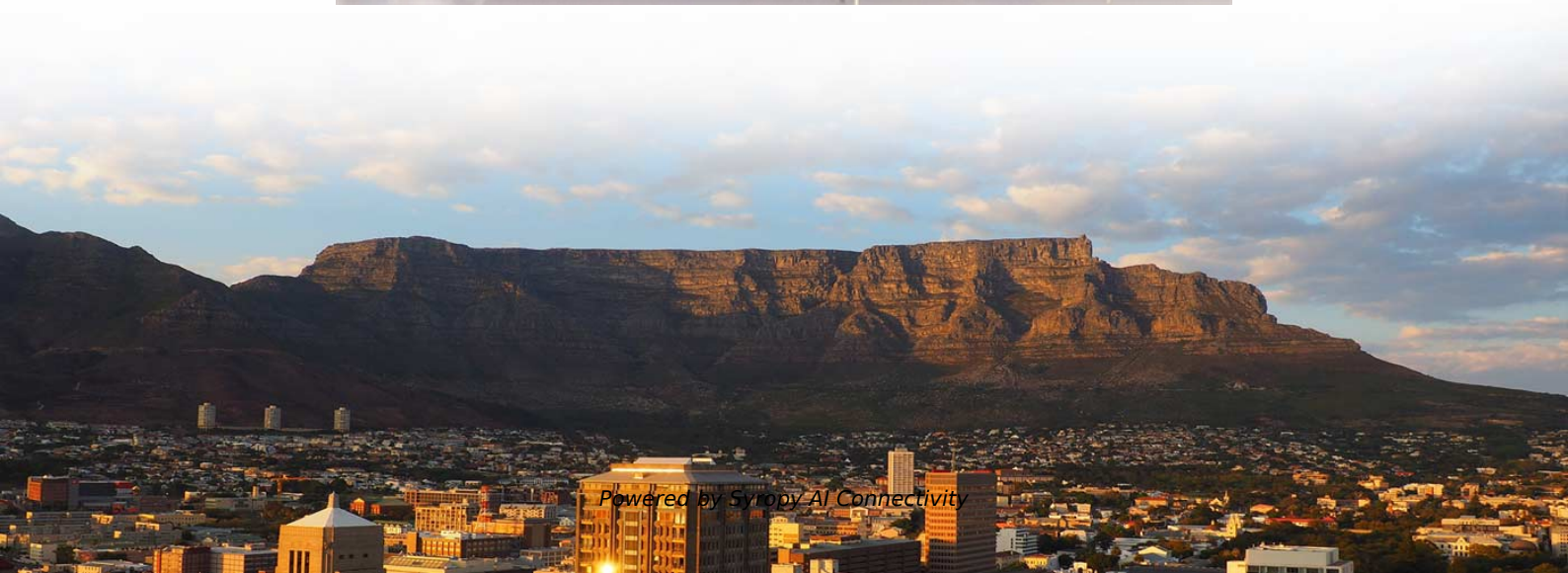


Huijue cpos single-mode optical module





Overview

Each module integrates eight electrical and eight optical channels operating at 212. With integrated DSP and silicon photonics (SiPh) technology, it provides excellent signal integrity and reach up to 500 meters over. Common optical modules include SFP, SFP+, SFF, and GE interface converter (GBIC). *4
DLL : Direct Laser & Lamination / DLL is registered trademarks of SHINKO ELECTRIC. This study presents an overview of CPO, highlighting its fundamental principles, advantages, and distinctive features. Recent developments in single-mode polymer waveguides are reinforcing their role as a vital component in co-packaged optics (CPO)—a critical technology for ultra-high-bandwidth, low-power data center interconnects.



Huijue cpos single-mode optical module



1.6T 2×DR4 TRO OSFP Transceiver Module , Lumentum

Each module integrates eight electrical and eight optical channels operating at 212.5 Gbps PAM4 per lane for an aggregate data rate of 1.6 Tbps. With integrated DSP

10 Gbit/s SFP+ Optical Module

The wavelength of these 10 Gbit/s SFP+ optical modules can be 850 nm, 1310 nm, or 1550 nm, and the transmission distance ranges from 0.3 km (0.19 mi.) to 80 km (49.71 mi.). Figure 1



Huawei Campus Optical Module Portfolio

In order to work efficiently, BIDI optical modules must be paired, and the duplexer must be tuned to match the desired wavelengths of the transmitter and receiver to achieve bidirectional data

The New Optical Interface: Novel Connector Designs

Marvell CPO integrates electro-optical transceiver engines into a single multichip module with ASICs, field-programmable gate arrays, or XPU. Detachable fiber



What Are the Common Types of Optical Modules?

Multimode optical modules have a typical center wavelength of 850 nm, and are used with multimode fibers. Multimode fibers have lower transmission performance than single-mode fibers because of

Single-Mode Polymer Waveguides in co-packaged

Polymer waveguides, fabricated on glass-epoxy (FR-4) substrates, serve as flexible, low-cost, and efficient optical bridges between external laser



Product Photography



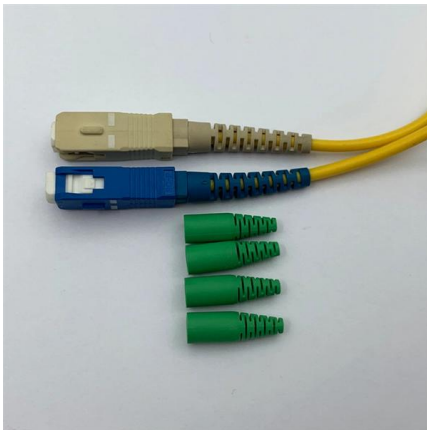
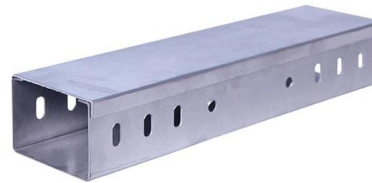
Optical Fiber

When using optical modules and optical fibers, pay attention to the following to ensure proper communication between devices: Use single-mode and multi-mode optical fibers as required. Tx



Co-packaged optics (CPO): status, challenges, and

A CPO module on the switch will be composed of a 2 × 800G optic transceiver chip along with other components, such as DSP and TIA/Driver.



Types of Optical Modules

Therefore, optical modules are also classified into single-mode and multimode modules to support different optical fibers. Single-mode optical modules are used with single-mode fibers.

GE eSFP Optical Modules

This document provides an overall description of the CE12800 series switches hardware, helping you obtain detailed information about each chassis, power module, fan module, card, cable, and



An Ultra-Compact CPO Transceiver Based on a 1060-nm Single

We propose an ultra-compact 25-Gb/s NRZ × 16-channel optical transceiver based on a 1060-nm coupled-cavity single-mode vertical cavity surface emitting laser (VCSEL) array and single-mode 19



Evaluating Co-Packaged Optics (CPO) Performance

This Application Note has explained the three types of CPO tests for the Switch ASIC electrical signal, optical engine optical signal, and CPO switch Ethernet signal tests.



Substrate for Co-Packaged Optics

Features Substrate with optical waveguides for high-density optical transmission based on SHINKO organic substrate technologies SHINKO Optical Polymer Waveguide supports single-mode

Co-packaged optics module with single mode polymer waveguide

We present co-packaged optics (CPO) modules featuring single-mode polymer waveguide (PWG) fiber interfaces to address the growing demand for high-bandwidth, energy-efficient



Multi-mode optical module VS Single-mode optical

About single-mode optical modules and multi-mode optical modules As the name implies, a single-mode optical module is an optical module used with a



25G Single-Mode Optical Module

SFP28 transceiver that supports 25G connections up to 10 km using single-mode fiber with a duplex LC UPC connector.



Optical Modules for Huawei S Series Switches

Multi-mode optical modules are applicable to short-distance transmission, while single-mode optical modules are applicable to long-distance transmission. Single-mode optical modules will be widely

Co-Packaged Optics (CPOs)

The optical engine of a transceiver--whether co-packaged or part of a pluggable module--typically includes an electronic integrated circuit (EIC) and



2. Imported design is convenient for expansion.
The design of two inlets saves space and allows for rear line entry.

Progress in Research on Co-Packaged Optics

These modules can be either plug-in optic modules or source optical cables, which are integrated onto the printed circuit board. This method has





Contact Us

For datasheets, pricing, or custom high-speed optical interconnect solutions,
please visit:

<https://www.syropy.com.pl>