

Huawei switches powered by PoE





Huawei switches powered by PoE

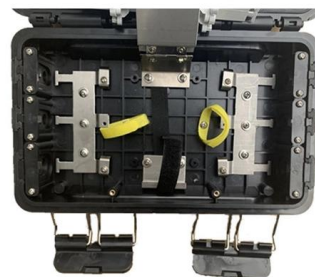


Huawei PoE Switches , 90W Hi-PoE & Multi-GE

Huawei PoE Switches High-power PoE, multigigabit speed, and AI-driven

PoE Configuration Commands

To enable the PoE switch to power these non-standard PDs, set the PoE power supply delay on the appropriate interfaces of the switch so that the switch detects the maintain power of the



What's the Difference between PoE, PoE+, and PoE++ on Huawei Switch?

Home All blogs What's the Difference between PoE, PoE+, and PoE++ on Huawei Switch? What's the Difference between PoE, PoE+, and PoE++ on Huawei Switch? 22 Oct, 2025. Posted

What Is Power over Ethernet (PoE)?

PoE provides both power supply and data transmission over Ethernet cables to IP terminals, such as IP phones, APs, and IP cameras.



01-06 POE CONFIGURATION

PoE+ is an enhancement to PoE, complies with IEEE 802.3at, and provides high PoE power to devices with high-power applications, including dual-frequency access devices, video phones, and Pan Tilt



Huawei eKit PoE+ Switch eKitEngine S220-48P4S 52 Port

Connections and interfaces Number of base-switching RJ-45 Ethernet ports 48 Basic Switching RJ-45 Ethernet ports type Gigabit Ethernet (10/100/1000) Number of installed SFP modules 4, 0 Console



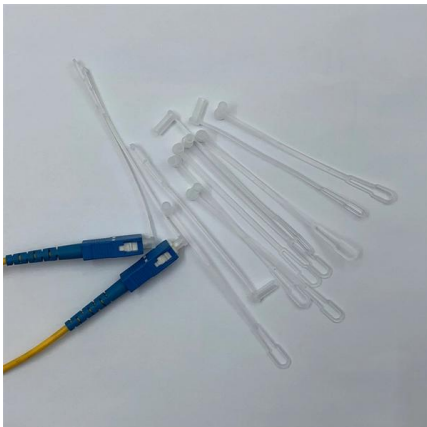
Huawei S5330-HI Series Switches Product Brochure

Huawei S5330-HI Series Switches Product Huawei S5330-HI gigabit ethernet switches are Huawei-developed next-generation agile switches that provide fixed full gigabit access and 10GE uplink



Huawei Network Switches in Nigeria for sale Prices on Jiji

Jiji 31+ Huawei Network Switches for sale in Nigeria From ? 25,000 Wi-Fi, LAN & enterprise gear Boost your speed today!



Switch Huawei NetEngine AR730 Managed/L3/1 Gbps/9-Port

Switch Huawei NetEngine AR730 Managed/L3/1 Gbps/9-Port Ethernet/1-Port SFP+/No POE Grey (AR730) at EuroSupplies, available to order with part number AR730 at the best price in the market.

Huawei Cloudengine S5731-s48p4x

The Huawei S5731-S48P4X is a PoE (Power over Ethernet) switch featuring 48 10/100/1000BASE-T ports and 4 10GE SFP+ ports. It supports two power module slots, each accommodating either a



190X95X25mm



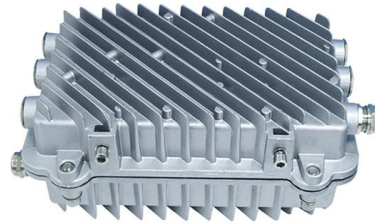
What's the Difference between PoE, PoE+, and PoE++ on Huawei

Huawei switches, equipped with PoE, PoE+, and PoE++ capabilities (PoE Switch), provide flexible options for powering various network devices like IP cameras, access points, and VoIP phones.



Huawei Switch PoE Configuration: Are You Powering Devices or

Power over Ethernet (PoE) on Huawei switches seems like plug-and-play magic--until your security cameras reboot during a midnight patrol or VoIP phones die mid-call. Configuring PoE on Huawei



Is Huawei's POE Switch the Key to Next-Gen Network Efficiency?

Huawei's switches, however, support high-power PoE++ standards (up to 90W per port), enabling them to fuel energy-hungry devices like PTZ cameras or advanced VoIP systems

Network Switches , Huawei Enterprise

Huawei Ethernet Switches Turbocharge your enterprise network with high-performance, high-availability for resilient services and simplified management.



How Do I Check the PoE Power Supply Capability and the

For a fixed switch using pluggable power modules, such data depends on the models and numbers of power modules in use. The following sections provide the methods for querying the



Introduction to PoE

Huawei PSEs have PoE modules integrated inside, belonging to the Endpoint PSE category. Endpoint PSEs are compatible with 10Base-T, 100Base-TX, 1000Base-T, and 2.5GE Base-T interfaces and



Overview of PoE

PoE+ is an enhancement to PoE, complies with IEEE 802.3at, and provides high PoE power to devices with high-power applications, including dual-frequency access devices, video phones, and Pan Tilt

CloudEngine S5755-S Series Switches

CloudEngine S5755-S series switches are Huawei's next-generation cost-effective access switches designed for the Wi-Fi 6/7 era. Based on Huawei's unified software platform and powered by high



Huawei PoE Switches - Powering PoE APs with Energy

Huawei's PoE switches redefine enterprise networking by integrating intelligent power management, cloud control, and energy efficiency. They not only



Huawei S5330-HI Series Switches Product Brochure

PoE++: The S5330-HI series PoE switches provide a maximum of 60 W PoE output power on a single interface, and can provide power for high-power terminals such as APs and surveillance cameras.



Huawei POE Switches: Powering More Than Devices?

Relying solely on standard Huawei POE switches is like installing basic plumbing in a skyscraper. The water flows on the lower floors, but good luck

Huawei S220-8P4S 8GE PoE+ 4SFP Switch , 125W Managed

Buy Huawei S220-8P4S switch with 8 PoE+ ports, 4 GE SFP uplinks, 125W power, 24Gbps capacity, and 18 Mpps forwarding. Ideal for SMB networks.



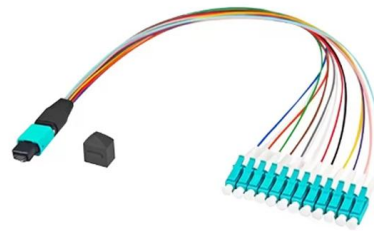
Huawei Switch PoE Configuration

Do you know how to configure PoE of Huawei switches? In this post, let's discuss. POE power supply standard In a PoE system, the device that



Huawei PoE Switches - Powering PoE APs with Energy

This guide explains how Huawei PoE switches enhance performance, improve energy efficiency, and integrate seamlessly with PoE access points and

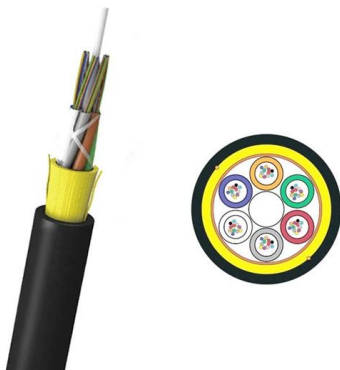


Configuring PoE Power-on and Power-off Management

Configuring PoE Power-on and Power-off Management Context The device supports two power-on and power-off modes: automatic and manual. In automatic mode, the interface power supply priority can

Huawei POE Switches: Powering More Than Devices?

Traditional POE switches (even reliable Huawei ones) often lock you into fixed power budgets per port (PoE/PoE+ mostly), inflexible management, and



PoE Configuration Commands

To enable the PoE switch to power these non-standard PDs, set the PoE power supply delay on the appropriate interfaces of the switch so that the switch detects the maintain power of the PDs after the



Understanding PoE

Other series of PoE switches provide power to PDs connected to the interfaces in the sequence in which PDs are connected to them. Manual mode: You can manually power on or off PDs connected to



Contact Us

For datasheets, pricing, or custom high-speed optical interconnect solutions, please visit:
<https://www.syropy.com.pl>