

Huawei switch with multiple ports





Huawei switch with multiple ports

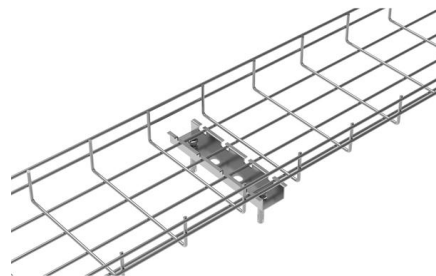


S Series Switches Stack Deployment Best Practices

If switches support cards and the service ports on the cards support stacking, these service ports can be used for stacking, and uplink ports on the switch panel can be connected to an uplink network.

S Series Switches Stack Deployment Best Practices

Information on user device interfaces shall prevail. Differences will not be described in the document. For the S series switches, multiple fixed switches can set up a logical device called stack, and two



9 Query Commands for Huawei Switches

With its excellent performance and rich functions, Huawei switches have become one of the preferred devices for many enterprise networks. This

Huawei S6320-SI Series Switches Product Brochure

Product Overview Huawei S6320-SI series switches are Huawei-developed next-generation multigigabit 10GE fixed switches. The S6320-SI can provide high-speed wireless access, and access for 10GE

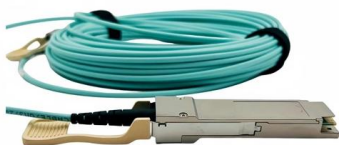
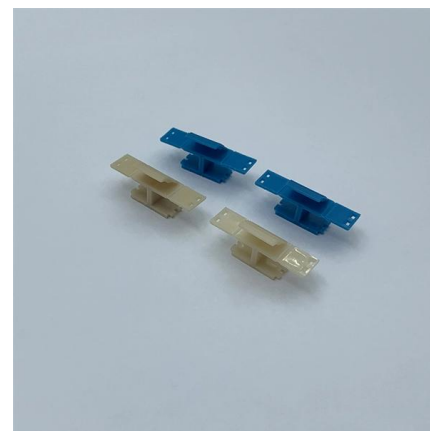


Huawei S6730-H48X6C Switch 48x10GE SFP+ 6x40GE

Huawei S6730-H48X6C CloudEngine switch with 48x10GE SFP+ and 6x40GE QSFP+ uplinks for high-density aggregation and campus core. Inquire price now.

How Do I Configure Multiple Physical Interfaces in a Batch?

How Do I Configure Multiple Physical Interfaces in a Batch? You can add multiple Ethernet interfaces to the same port group. After you run a configuration command once in the port group view, the



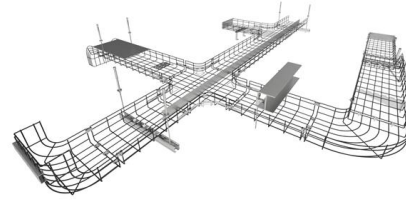
How to batch configure Huawei switches? (with

Huawei switch configuration port group function, you can quickly complete multiple interface batch configuration, reduce the duplication of



Empowering Enterprise Connectivity: An In-Depth Look at the Huawei

The Huawei S5735-L48P4X-A is more than just a switch; it is a high-density power hub and a high-speed data gateway rolled into one. By providing 48 GE PoE+ ports and 10G uplinks, it



CloudEngine S5732-H Series Switches , Huawei Enterprise

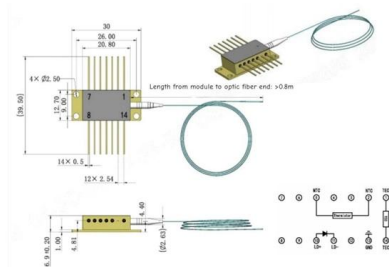
Huawei CloudEngine S5732-H Series Multi-GE Switches are designed for the Wi-Fi 6 era with 2.4 Tbit/s switching capacity and multi-GE ports. Learn more.

VLAN Configuration on Huawei Switch , Access, Trunk & Hybrid Ports

This tutorial covers everything from VLAN creation to interface assignment and verification -- perfect for beginners and network professionals alike. ? Topics Covered: Entering



Outline drawings mm



Huawei S6730 Switch - 10GE Aggregation & Core

Explore Huawei S6730 Switch: 24-48 10GE access, 40/100GE uplinks, VXLAN/BGP-EVPN, built-in WLAN AC, SEP/ERPS resilience, telemetry,



Huawei S5731-S48P4X 48x GE PoE+ 4x 10G SFP

Huawei S5731-S48P4X CloudEngine switch with 48x GE PoE+ and 4x 10G SFP+ uplinks for campus and enterprise access. View key features and specifications now.



Huawei S5735-L24P4X-A Switch 24xGE 4x10G SFP

Huawei S5735-L24P4X-A Overview
S5735-L24P4X-A is the Huawei S5735-L switch with 24 x 10/100/1000Base-T ports, 4 x 10 GE SFP+ ports, PoE+. Huawei

Huawei 40G Switch Guide: How to Choose the Right Model

A practical, no-fluff guide to selecting a Huawei 40G switch--covering real-world use cases, key specs to compare, cost trade-offs, and when you *don't* need 40G at all.



How to Enable Ports in Huawei Switch? Could Open Ports Unlock

This guide dives into the step-by-step process of port configuration on Huawei switches, while addressing the often-overlooked question: Does opening ports inadvertently create backdoors



CloudEngine S5755-H Series , Huawei Enterprise

Huawei CloudEngine S5755-H series switches are high-quality gigabit access switches that provide 24 or 48 10/100/1000BASE-T downlink ports, four 25GE



Network Switches , Huawei Enterprise

Huawei campus switches are ideal for building future-proof campus networks with simplified management, high reliability, and service intelligence, across industries

Huawei CloudEngine S5735-L Series Switches Datasheet

CloudEngine S5735-L Series Switches Datasheet
Huawei CloudEngine S5735-L series are simplified gigabit Ethernet switches that provide all GE downlink ports



Huawei S9300E Switch Product Brochures

Product Overview Huawei S9300E series (S9300E for short) terabit routing switches are next-generation high-end smart switches tailored for multiservice networks. The S9300E uses Huawei's intelligent



Huawei Ethernet Switch & Network Switches Solutions

Thunder link offers various models of Huawei Ethernet switches and network switches, including the S5720, S6720, S6730, CE6800 and CE12800, designed



Switch Port VLAN Assignment (Trunk & Access Ports)

This article explains how to apply VLANs to switch ports, focusing on trunking/trunk ports and access ports. Trunk ports allow traffic for multiple VLANs, while access

Huawei: How to split an interface on switch

The port split function on Huawei switches allows a physical high-bandwidth port (e.g. 40Gbps) to be split into multiple independent low-bandwidth ports (e.g. 10Gbps), giving more



Huawei S220S-10PN4JX PoE+ Switch 10GE SFP+ 76Gbps

The Huawei S220S-10PN4JX is a high-performance multi-Gigabit PoE+ switch designed for modern enterprise and high-density network environments. With advanced port flexibility including 2.5GE and



Step-by-Step Guide to Configure VLAN and Bind Ports

Configuring a Huawei switch to assign an IP address to VLAN 1 and binding multiple ports to it can seem challenging, but this step-by-step guide



Huawei S310-48P4X

Huawei S310-48P4X is a managed and stackable L3 PoE switch, which is equipped with 48 Gbit Ethernet ports with 802.3af/at support and 4 SFP+ slots. It supports L3 routing protocols and offers a

Contact Us

For datasheets, pricing, or custom high-speed optical interconnect solutions, please visit:
<https://www.syropy.com.pl>