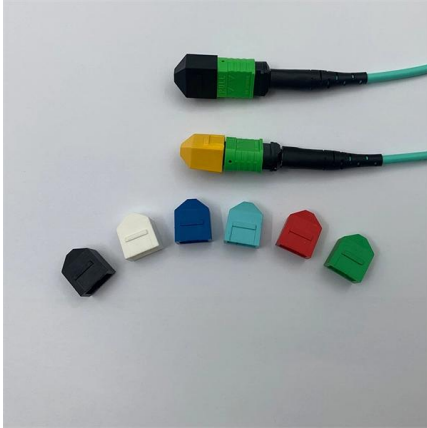


Huawei optical port plugs into Huijue optical modules





Huawei optical port plugs into Huijue optical modules



Installing Optical Modules

Do not insert the optical module with optical fibers directly into an optical interface. You need to install the optical module first and then the optical fibers.

01-15 PLUGGABLE MODULES FOR PORTS

That is, multimode fibers must be inserted into multimode optical modules, and single-mode fibers must be inserted into single-mode optical modules. If a fiber is inserted into an optical module of a different



Types of Optical Modules

A common optical module has a center wavelength of 850 nm, 1310 nm, or 1550 nm, whereas a wavelength division multiplexing module transmits lights with different center wavelengths.

Optical Module Installation and Replacement

If an optical module cannot be completely inserted into an optical port, turn the optical module over and try again. Cover unconnected optical modules with dust plugs.



Optical Module Solutions for Huawei S5700/S5720 Series Switches

This article summarizes several solutions for using optical modules with switches and common problems encountered during usage, along with specific solutions.

Understanding Pluggable Optical Modules

Optical modules are available in various types to meet diversified requirements. Classified by transmission rate. Currently, the transmission rates of optical modules cover a wide range. According



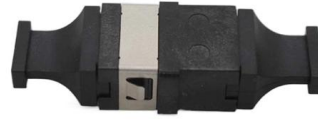
Huawei Unveils StarryLink Optical Modules That Deliver

To address these challenges, Huawei's StarryLink optical modules deliver a high-quality network experience with three key capabilities: Spanning:



Understanding Pluggable Optical Modules

If you cannot push the optical module into an optical module cage any longer, the optical module is in good contact with the board connector. When installing a CFP optical module, push the module

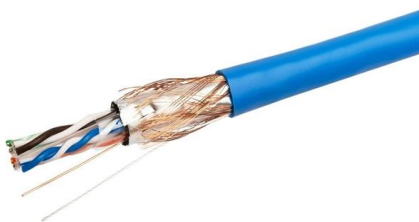
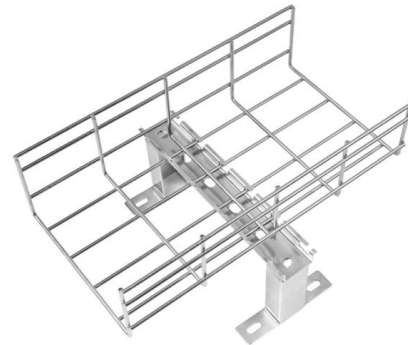


Understanding Optical Modules

On an optical network, a sender needs to convert electrical signals into optical signals before sending them to a receiver, and the receiver needs to convert received optical signals into

Troubleshooting Guidelines for Optical Modules

If the transmit optical power is abnormal, replace the optical module. Remove and reinstall the optical module. If the fault persists, replace the optical module with a normal one of the same type to check



Replacing an Optical Module

Replacing an Optical Module Context When replacing an optical module, do not look into the optical port without eye protection. Laser beams from the optical port can cause eye damage.



Optical Modules in Intelligent Computing Scenarios

Huawei provides a full series of pluggable optical modules. A wide variety of modules give you flexible plug-and-play options for all types of interfaces.



Installing Optical Transceivers and Connecting Optical Fibers

Installing Optical Transceivers and Connecting Optical Fibers This section describes how to install optical transceivers on the SFP or SFP+ ports and connect them to the ports of the peer device using

Understanding Pluggable Optical Modules

Therefore, optical modules are also classified into single-mode and multimode modules to support different optical fibers. Single-mode optical modules are used with single-mode fibers.



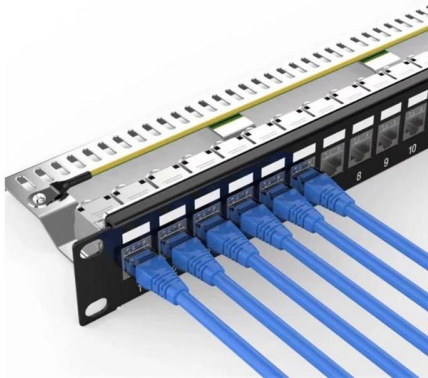
01-10 PLUGGABLE MODULES FOR PORTS

Therefore, when using such optical modules, select optical fibers of an appropriate length to ensure that the actual receive power is smaller than the overload power.



Risks of Using Non-Huawei-Certified Switch Optical Modules

Some non-Huawei-certified switch optical modules are not designed in compliance with EMC standards and have low anti-interference capability. Additionally, they bring electromagnetic

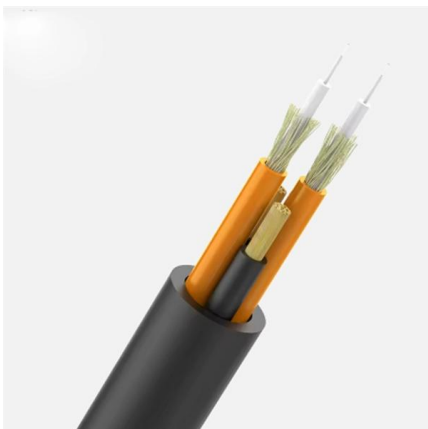


Optical Module: Typical Optical Module Troubleshooting Procedure

If it is not a Huawei-certified optical module, replace it with a Huawei-certified optical module. If the optical module is installed on a GE port, run the display interfaceGigabitEthernet x/x/x command to

Typical Troubleshooting Cases of Optical Module

Form a loop on the port using an optical fiber, and check whether the port can go Up (if optical modules with a long transmission distance are used, use optical attenuators.) Check the configuration, such



01-09 PLUGGABLE MODULES FOR INTERFACES

Huawei routers must use Huawei-certified optical modules. Non-Huawei-certified optical modules cannot ensure transmission reliability and may affect service stability.

Understanding Optical Modules



On an optical network, a sender needs to convert electrical signals into optical signals before sending them to a receiver, and the receiver needs to convert received optical signals into electrical signals.



8 Pluggable Modules for Interfaces

To confirm whether optical modules you are using have been certified for use on Huawei S switches, contact Huawei technical support. Huawei started certification on 10GE or lower speed optical

Optical Module Troubleshooting

Optical Modules on the Local and Remote Devices Cannot Communicate Fault Description
A switch is connected to a remote device through optical interfaces and optical fibers. The two optical ports are



How To Read Optical Module Information On Huawei Switches

The following uses the Moduletek SFP-10G-LR module connected to a Huawei S6700 switch as an example to introduce how to read information of the connected optical module on a Huawei switch.



Optical Modules for Huawei S Series Switches

If an optical module cannot be completely inserted into an optical port, turn the optical module over and try again. Cover unconnected optical modules with dust plugs.



Contact Us

For datasheets, pricing, or custom high-speed optical interconnect solutions, please visit:

<https://www.syropy.com.pl>