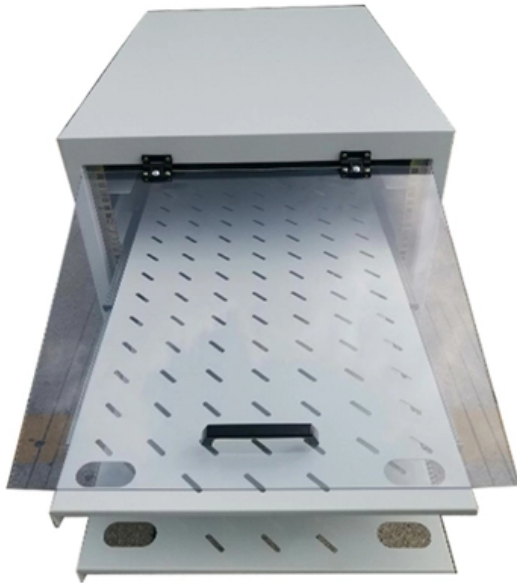
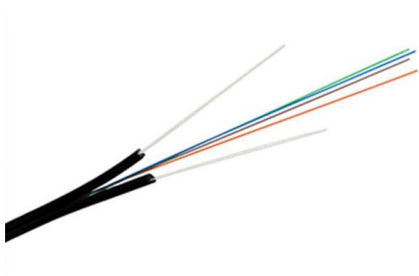


Huawei Switch Dual-Network Access





Huawei Switch Dual-Network Access



Ethernet Switches

These switches accommodate cloud data center, large metro core, aggregation, edge aggregation, and access networking requirements. Huawei also provides

Step-by-Step Guide to Configure VLAN and Bind Ports

Configuring a Huawei switch to assign an IP address to VLAN 1 and binding multiple ports to it can seem challenging, but this step-by-step guide



Switches

These switches accommodate cloud data center, large metro core, aggregation, edge aggregation, and access networking requirements. Huawei also provides

VLAN Configuration on Huawei Switch , Access, Trunk & Hybrid Ports

This tutorial covers everything from VLAN creation to interface assignment and verification -- perfect for beginners and network professionals alike. ? Topics Covered: Entering system view



Basic CLI Commands on Huawei Switch

This text is a guide detailing Basic Command Line Interface (CLI) Commands on Huawei brand switches. It provides step-by-step instructions for users to perform

Network Switches , Huawei Enterprise

Designed for scenarios such as data centers, enterprise campuses, and enterprise private lines, making networks more simple, smart, open, and secure, as well as



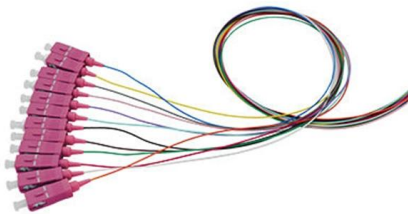
Huawei EMUI 11: How to switch SIM cards quickly

In today's scenario, a dual SIM device is very usable. It lets you take a great advantage as you can have a separate contact list on both cards and both



Huawei, WIFI Router, Dual-core 1.2 GHz, Gigabit Speed1, White

HUAWEI WiFi WS5200 NEW lets you enjoy blazing dual-band Wi-Fi speeds (max 400 Mbps at 2.4 GHz + max 867 Mbps at 5 GHz).¹ It also offers Gigabit Ethernet connection for speeds as fast and



Huawei Ethernet Switch & Network Switches Solutions

Thunder link offers various models of Huawei Ethernet switches and network switches, including the S5720, S6720, S6730, CE6800 and CE12800, designed

Example for Configuring Dual-Uplink Internet Access Using Static IP

Example for Configuring Dual-Uplink Internet Access Using Static IP Addresses for Load Balancing Networking Requirements In Figure 1, a small-sized enterprise deploys a router as an



PRODUCT CATEGORY				
Open rack Series	3Urd 6-bay rack	12U 4-bay open rack	18" Opened Wall rack	Adjustable Depth Open rack
Wall mount rack Series	Glass door Wall mount rack	Mesh door Wall mount rack	Double section Wall mount rack	Economic type Wall mount rack
Floor standing server rack	Glass door with casters	Mesh door with casters	42U Standard Server rack	Double open door Server rack
Outdoor cabinet	with conditioner Outdoor cabinet	Outdoor cabinet with plinth	Outdoor cabinet with fan cooling	Double Wall Outdoor cabinet
Splitter series	Bare Fiber Splitters	Blackless Fiber Splitters	ABS Splitters	Fanout Splitters
Splitter series	LC/LC Splitters	Rack Mount Splitters	Mini Plug-in Type Splitter	Tray Splitters
Patch cord series	LC-LC	SC	FC	LC-LC
FTTH product series				

(Optional) Configuring the Active/Standby Link Switchover Mode

To allow an AP to use a link with high network stabilization, set the active/standby link switchover mode to the network stabilization mode. When the condition for triggering an active/standby link switchover



Configuring APN Profiles (Dual SIM Cards)

An access point name (APN) identifies an external PDN (for example, the Internet or IMS network) that users want to access. You can create an APN profile to configure an APN. In the scenario where



Sx300 Series Switches Typical Configuration Examples (V200)

Configure the user access mode to multi-authen and set the maximum number of access users to 100, so the device can control the network access rights of each user independently.



Accessing Different LTE Networks Using Dual SIM Cards

As shown in Figure 5-7, the headquarters and branch of an enterprise are located in different places. Router is the egress gateway of the branch and connects to the headquarters through an LTE



Huawei AC6805 Wireless Access Controller Datasheet

Through automatic inter-AP negotiation, the redundant radio is automatically switched to another mode (dual-5G AP models support 2.4G-to-5G switchover) or is disabled to reduce 2.4 GHz co-channel



Example for Accessing Different LTE Networks Using Dual SIM Cards

As shown in Figure 5-11, the headquarters and branch of an enterprise are located in different places. Router is the egress gateway of the branch and connects to the headquarters through an LTE



IdeaHub Board 2 , Education Display , Huawei Enterprise

HUAWEI IdeaHub Board 2 education display integrates teaching hardware and a software ecosystem to provide a one-stop smart classroom solution. Discover it.

Configure Dual SIM Settings , HUAWEI Support UK

Go to Settings > Mobile network > SIM management > Call forwarding between SIMs. Select a call forwarding mode and turn on the corresponding switch. Call forwarding between SIMs is enabled



Example for Configuring a Layer 3 Switch to Work with a Router for

Example for Configuring a Layer 3 Switch to Work with a Router for Internet Access Layer 3 Switch Layer 3 switches provide the routing function, which indicates a network-layer function in the OSI



Huawei S6320-SI Series Switches Product Brochure

Product Overview Huawei S6320-SI series switches are Huawei-developed next-generation multigigabit 10GE fixed switches. The S6320-SI can provide high-speed wireless access, and access for 10GE



Example for Configuring Dual-Uplink Internet Access Using Static IP

To prevent network congestion when the network traffic is heavy, the enterprise deploys two uplinks on the router to connect to the Internet. Both links are connected to ISP networks through

EXCLUSIVE TEST: Huawei switch: Good first effort

In this Clear Choice test - Huawei's first public outing in a North American setting - the world's largest telecom vendor took the humble approach, supplying a pretty basic managed layer-2



Example for Dual-Homing a Switch to an IP Network Through V-VBST

On SwitchA and SwitchB, configure IP and MAC addresses for VLANIF interfaces so that SwitchA and SwitchB function as dual-active gateways for access devices. Configure OSPF on



Example for Configuring a Layer 2 Switch to Work with a Router for

Networking Requirements In Figure 1-3, a company has multiple departments that belong to different network segments, and each department needs to access the Internet. It is required that users



How to Master Huawei Switch Stacking: Best Practices and

Switch stacking is a cornerstone of modern network design, enabling simplified management, improved redundancy, and scalable bandwidth. Huawei's stacking technology (e.g.,

S5700-LI Switch Datasheet (Detailed Version)

Huawei S5700-LI-BAT series battery LAN switches (S5700-LI-BAT for short) are the industry's first switch series to support built-in batteries and provide visualized battery status management. The



Example for Accessing Different LTE Networks Using Dual SIM Cards

As shown in Figure 11-15, the headquarters and branch of an enterprise are located in different places. Router is the egress gateway of the branch and connects to the headquarters through an LTE



Accessing Different LTE Networks Using Dual SIM Cards

As shown in Figure 12-10, the headquarters and branch of an enterprise are located in different places. Router is the egress gateway of the branch and connects to the headquarters through an LTE



S5700 Series Switches Product Description (V200)

Product Characteristics Huawei S5700 series Ethernet switches are next-generation energy-saving GE switches designed to provide high-bandwidth access and Ethernet multi-service aggregation.

Contact Us

For datasheets, pricing, or custom high-speed optical interconnect solutions, please visit:
<https://www.syropy.com.pl>