

Huawei Router Viewing Optical Module





Overview

If you know the model or type of an optical module, you can view the section "Pluggable Modules for Interfaces" in the Hardware Description to look up parameters of the optical module, including the center wavelength, transmission distance, fiber types supported, receive optical. Optical modules are widely used in switches, network interface cards (NICs), routers, and other communication devices. During use, reading optical module information helps understand its real-time operating status, enabling faster troubleshooting of link abnormalities. Taking the Huawei 5700 series switches as an example, the commands to view optical module information are as follows: Transceiver Type :1000_BASE_SX_SFP Connector Type :LC Wavelength(nm) :850 Transfer Distance(m) :300(50um),150(62. Here are the sample commands for checking the Transmit/Output (TX) and Receive/Input (RX).



Huawei Router Viewing Optical Module

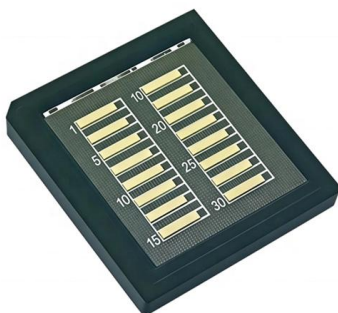
Huawei Technical Support

Discover how to view the serial number of an optical module with step-by-step guidance from Huawei Technical Support.



Typical Troubleshooting Cases of Optical Module

General Optical Module Troubleshooting Procedure Check whether an optical module is a bogus one. An optical module delivered by Huawei is uniquely identified by an SN. If two or more optical



How to View Optical Module Parameters

Viewing the Hardware Description If you know the model or type of an optical module, you can view the section "Pluggable Modules for Interfaces" in the Hardware Description to look up parameters of the

How to Identify Huawei-Certified Optical Modules

Huawei routers must use Huawei-certified optical modules. Non-Huawei-certified optical modules cannot ensure transmission reliability and may affect service stability. Huawei is not



Introduction of Optical Modules on Huawei Switches

When Huawei switches are connected to other products such as routers, comply with the preceding optical module interoperation rules. The following describes the



How to View Optical Module Parameters

If an optical module is installed in a running router, you can run the display transceiver command to view parameters of the optical module, including the center wavelength, transmission



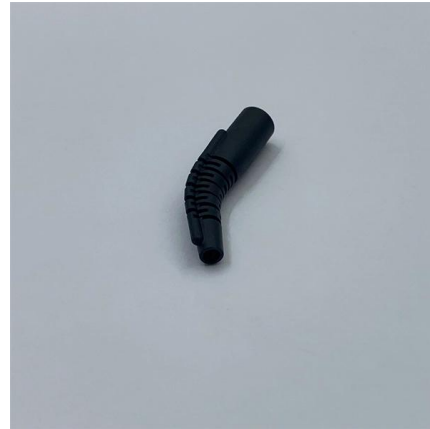
Troubleshooting Optical Module Issues

Troubleshooting Optical Module Issues Symptom
An optical port cannot go Up. The optical module cannot be properly identified and optical module information cannot be obtained. After



Displaying Optical Module Information

What Is the Impact of Using Non-Huawei-Certified Optical Modules? Huawei-certified optical modules have been tested to the highest standards to ensure their quality. Tests include the installation and



Displaying Optical Module Information

Run the display transceiver diagnosis interface [interface-type interface-number] command to view diagnostic information about a specified optical module. This command displays the digital diagnostic

Huawei Switches Viewing Optical Port Receiving and Sending

Use the command display transceiver to view the optical module information of all optical ports, and use the command display transceiver interface interface-type interface-number to view the



How To Switch Optical-Electrical Mode On Huawei

After switching the interface to the optical interface, access the GE SFP optical module at this time, and the module can work normally. For related commands,



What Is an Optical Module and Its FAQs (V200)

What Is an Optical Module and Its FAQs (V200) Describes what an optical module is and FAQs, including the fundamentals, appearance and structure, key performance counters, common types,



Displaying Optical Module Information

When certifying an optical module, Huawei comprehensively verifies the functions of the optical module to ensure the optical module quality. The functions include the installation and removal, transmit and

Checking the Optical Module Type

For the Huawei-certified optical modules, Huawei has added Huawei logo and identifier and changed the vendor information in the product elabel and optical module information into HUAWEI. When an



Types of Optical Modules

Optical modules are encapsulated in different modes to provide different structures. Huawei routers support optical modules of the following encapsulation types: SFP, eSFP, SFP+, XFP, and QSFP+.



What Is an Optical Module

An optical module is a device for converting electrical signals to optical signals and vice versa, widely used in telecommunications and data centers.



Displaying Optical Module Information

Displaying Optical Module Information You can use the display commands to view information about the optical module on an interface, including conventional information, manufacturing information, and

How to View Optical Module Parameters

If an optical module is installed in a running router, you can run the display transceiver command to view parameters of the optical module, including the center wavelength, transmission distance, fiber types



Checking 400GE Transmit (TX) and Receive (RX) Optical Power in

For checking transmission links on Huawei routers, it is important to know how to check the optical power of 400GE modules or interfaces for troubleshooting and to ensure the desired or optimal range



Understanding Optical Modules

Understanding Optical Modules Appearance and Structure of an Optical Module Types of Optical Modules Optical Module Terms Rules for Optical Module Interoperation



How To View The Optical Module DDM Information On

View the optical module information on Huawei switches and H3C switches through the command

Huawei Optical Switch View Optical Module Commands

Taking the Huawei 5700 series switches as an example, the commands to view optical module information are as follows:



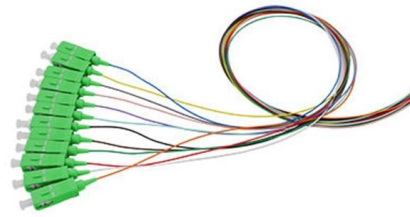
What Is an Optical Module

On an optical network, a sender needs to convert electrical signals into optical signals before sending them to a receiver, and the receiver needs to convert received optical signals into



How To Read Optical Module Information On Huawei Switches

Optical modules are widely used in switches, network interface cards (NICs), routers, and other communication devices. During use, reading optical module information helps understand its real



Understanding Optical Modules

On an optical network, a sender needs to convert electrical signals into optical signals before sending them to a receiver, and the receiver needs to convert received optical signals into electrical signals.

Displaying Hardware Information on Huawei Routers

Here are the common commands to use to display hardware-related information on Huawei Routers. The inventory information such as serial number, product code,optical module,device,



Optical Module: The Device Cannot Display Any Optical Module

Call Huawei global service hotline or contact software maintenance engineers to verify the software version. If allowed, reboot the device or power off and restart the device. Services on



Contact Us

For datasheets, pricing, or custom high-speed optical interconnect solutions, please visit:

<https://www.syropy.com.pl>