

Huawei PoE Switch Parameters





Huawei PoE Switch Parameters



Configuring PoE Power-on and Power-off Management

To shorten the time during which PDs are powered off, configure fast power-on for PoE interfaces on the PoE switch. After the PoE switch is powered off and then restarts, PoE interfaces can rapidly resume

PoE

Figure 5-146 Global Settings Table 5-82 describes the parameters in Global Settings. Table 5-82 Parameters in Global Settings Item Description Slot ID Selects a single board. Power supply

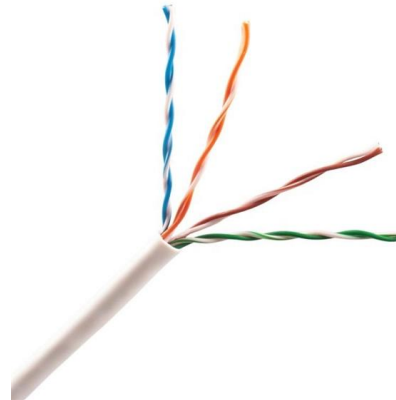


How Do I Check the PoE Power Supply Capability and the

The Maximum PoE power consumption parameter indicates the maximum PoE power supply capability of the switch in different power module scenarios. The PoE+ power interfaces and

Enabling the PoE Function

Enabling the PoE Function Context Ensure that the PoE function is enabled on an interface before powering on a PD connected to the interface.



PoE Configuration

S1720, S2700, S5700, and S6720 V200R011C10 Configuration Guide - Device Management This document describes the principles and configurations of the Device Management features, and



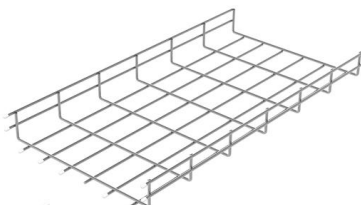
What's the Difference between PoE, PoE+, and PoE++ on Huawei

Diagram of a PoE system Huawei switches, equipped with PoE, PoE+, and PoE++ capabilities (PoE Switch), provide flexible options for powering various network devices like IP cameras, access points,



PoE Configuration Commands

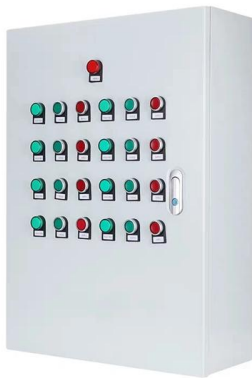
Whether switches support PoE depends on the hardware. Non-PoE switches cannot be changed to PoE switches through software upgrades. A switch that meets any of the following conditions is a PoE





01-05 POE CONFIGURATION

PoE technology is used on the wired Ethernet and is most widely applied on LANs. PoE allows power to be transmitted to terminal devices through data line pairs or unused line pairs. A PoE-capable device



Checking Whether the Basic PoE Configuration Is Correct

Procedure The PoE function is enabled on a switch by default. When PoE power supply fails on the switch, the PoE function may have been disabled and needs to be enabled on ports of the switch.

01-06 POE CONFIGURATION

The PoE switch can transmit both current and data on a pair of signal cables. For the available PoE power, maximum number of ports, and power module type provided by different PoE switch models,



What Is Power over Ethernet (PoE)?

PoE Power Supply Mode According to the IEEE standards, PSEs are classified into midspans and endpoints. Midspan indicates that the PoE module is



01-04 POE CONFIGURATION

4.1 Overview of PoE 4.2 Understanding PoE 4.3 Configuration Precautions for PoE 4.4 Default Settings for PoE 4.5 Enabling the PoE Function 4.6 (Optional) Configuring Compatibility with Non-Standard



PoE Configuration Commands

Command Support Whether switches support PoE depends on the hardware. Non-PoE switches cannot be changed to PoE switches through software upgrades. A switch that meets any of the following

01-08 POE CONFIGURATION

A switch supports three types of PoE power modules: 800 W AC, 2200 W AC, and 2200 W DC. 2200 W DC power modules can be used as PoE power modules only in V200R006C00 and later versions.



How to enable and disable PoE on Huawei S series switches?

Introduced how to enable and disable PoE on Huawei S series switches, and learn more about Huawei S series switches.

PoE Configuration Commands



This document describes all the configuration commands of the device, including the command function, syntax, parameters, views, default level, usage guidelines, examples, and related commands.



PoE Configuration Commands

In this case, you can run this command to specify the thresholds of PoE power supply negotiation parameters so that the switch can provide power to non-standard PDs.

PoE Configuration Commands

To enable the PoE switch to power these non-standard PDs, set the PoE power supply delay on the appropriate interfaces of the switch so that the switch detects the maintain power of the PDs after the



Huawei Enterprise Support Community

We're sorry but web site doesn't work properly without JavaScript enabled. Please enable it to continue. Loading



Huawei Switch PoE Configuration

There are two main ways to close the POE function of the switch. The first method is to log in through the web page to directly close it, and the second



01-06 POE CONFIGURATION

PoE+ is an enhancement to PoE, complies with IEEE 802.3at, and provides high PoE power to devices with high- power applications, including dual-frequency access devices, video phones, and Pan Tilt

CloudEngine S5735-S-V2 Series Switches , Huawei

Huawei S5735-S V2 gigabit switches provide flexible access for Wi-Fi 6 networks. They support ZTP and free mobility. Learn more.

AOC

- 100G QSFP28 to 4*25G SFP28 AOC
QSFP-4X25G-AOC**M
- 10G SFP+ AOC
SFP-10G-AOC**M
- 25G SFP28 AOC
SFP28-25G-AOC**M
- 100G QSFP28 AOC
QSFP-100G-AOC**M
- 40G QSFP+ to 4*10G SFP+ AOC
QSFP-4X10G-AOC**M
- 40G QSFP+ AOC
QSFP-40G-AOC**M

10G 25G
40G 10G



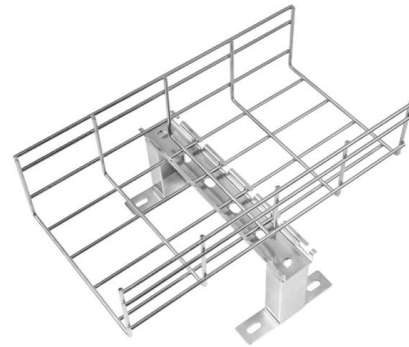
01-06 POE CONFIGURATION

Based on these components and media, SNR parameters can be optimized to enable MultiGE electrical interfaces of Huawei PoE devices to support a maximum transmission distance of 200 m when they

PoE Configuration Commands



This document describes all the configuration commands of the device, including the command function, syntax, parameters, views, default level, usage guidelines, examples, and related



Contact Us

For datasheets, pricing, or custom high-speed optical interconnect solutions, please visit:
<https://www.syropy.com.pl>