

Huawei Optical Module Parameter Interface Type





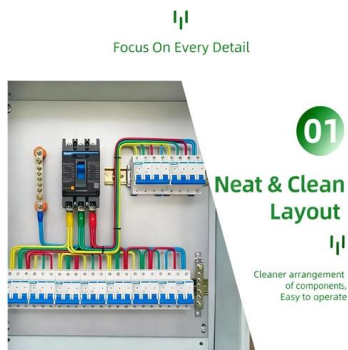
Overview

Taking the Huawei 5700 series switches as an example, the commands to view optical module information are as follows: Transceiver Type :1000_BASE_SX_SFP Connector Type :LC Wavelength(nm) :850 Transfer Distance(m) :300(50um),150(62.5um)When the optical module on an interface is faulty, you can run the display commands to view information about the optical module. An eSFP module is an SFP module that supports monitoring of voltage, temperature, bias current, transmit optical power, and receive optical power. Many friends have a doubt that the optical module I got is brand-new in appearance, but I don't know how to query the relevant information of the optical module.



Huawei Optical Module Parameter Interface Type

DETAILS DISPLAY



01-10 OPTICAL MODULES

If an optical module is installed in a running device, you can run the display transceiver command to view parameters of the optical module, including the center wavelength, transmission distance, fiber

PON Interface Configuration Commands

The optical-module threshold temperature command sets the lower and upper alarm thresholds of the temperature for the optical module on a passive optical network (PON) interface.

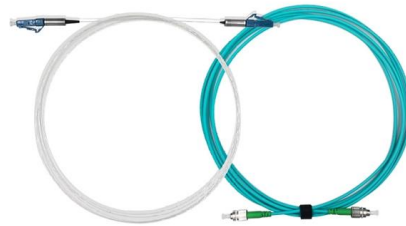


display interface transceiver

Usage Guidelines You can view the general information, manufacture information, and alarm information about the optical module on the interface of the device by using this command. If the verbose

Checking the Optical Module Type

The selected optical modules must be supported by the optical interfaces. Check whether the optical module used on the switch is certified by Huawei switches. For the Huawei-certified optical modules,



Huawei QSFP-DD-400G-SR4 400G Optical Transceiver Module

High-speed 400GBase-SR4 transceiver for data centers, MMF, 850nm, MPO-12 connector, 0.05km range, with 1-year warranty.

Checking the Working Modes

Procedure Run the display transceiver interface interface-type interface-number verbose command to view the optical module parameter settings. All the parameters of each optical module



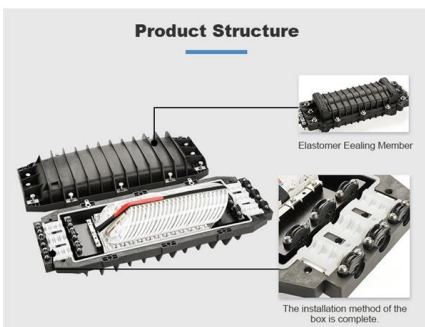
Introduction of Optical Modules on Huawei Switches

Check Optical Module Parameters: If an optical module is installed in a running switch, you can run the display transceiver command to view parameters of the



Huawei Switches Viewing Optical Port Receiving and Sending

Use the command display transceiver to view the optical module information of all optical ports, and use the command display transceiver interface interface-type interface-number to view the



Displaying Optical Module Information

Run the display transceiver diagnosis interface [interface-type interface-number] command to view diagnostic information about a specified optical module. This command displays the digital diagnostic

Huawei enterprise switches

Run the display transceiver [interface interface-type interface-number , slot slot-id] , to view the information on the optical module interface. Run display transceiver diagnosis interface [interface



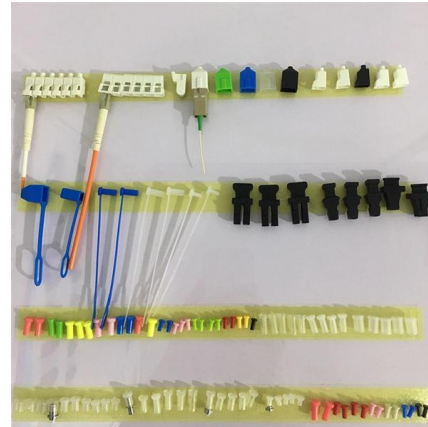
Huawei SFP-25G-SR-B6-ISP DCN Bundle (6* SFP-25G)

Specifications Model SFP-25G-SR-B6-ISP (Bundle of 6x SFP-25G-SR modules) Product Type Optical Transceiver Bundle Form Factor SFP28 (Small Form-factor)



Checking Parameter Settings of the Optical Modules

Check the parameter settings such as rate, wavelength, and transmission distance of the interconnected optical modules. Using the optical modules from the same vendor is recommended.



Displaying Optical Module Information

When you run the display transceiver interface interface-type interface-number verbose command to view information about a specified optical module, Alarm information indicates which fault occurs on the

Checking Parameter Settings of the Optical Modules

View the optical module parameters on the package or run the display transceiver command to query optical module information: For example, when you run the display transceiver interface interface



Understanding Optical Modules

Type of the interface on an optical module to accommodate a fiber. Commonly used connector types are LC (applicable to all the SFP, SFP+, and XFP modules), SC, and MPO (applicable to 150 m QSFP+)





Displaying Optical Module Information

Displaying Optical Module Information You can use the display commands to view information about the optical module on an interface, including conventional information, manufacturing information, and



Checking Whether the Optical Fiber and Optical Module

1550 nm: single-mode optical modules. They are often used for long-distance transmission. GE and 10GE optical modules have the same appearance. You

Huawei Optical Switch View Optical Module Commands

Taking the Huawei 5700 series switches as an example, the commands to view optical module information are as follows: Transceiver Type



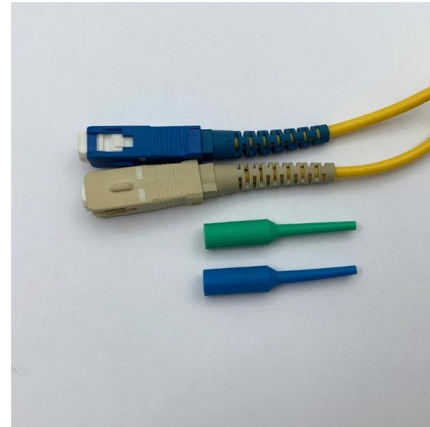
Huawei Technical Support

Learn how to display optical module information on Huawei devices using specific commands and understand the diagnostic details of optical modules.



Huawei XFP-10G-1550NM-80KM-SM Optical Module Sample Report

Huawei XFP-10G-1550NM-80KM-SM optical module supports 80KM link length on 10G standard single-mode fiber (SMF) G.652. The official key parameters and the physical appearance of



How to View Optical Module Parameters

Using a Command If an optical module is installed in a running router, you can run the display transceiver command to view parameters of the optical module, including the center

How To Read Optical Module Information On Huawei Switches

The output includes interface rate, module type, link status (the state being UP is a prerequisite for normal operation) and traffic statistics, which can be used for troubleshooting.



Teach you to read the DDM information of the optical

Today, ETU-LINK will introduce how to query the information of optical module on Huawei switch. Next, we will introduce the query instructions of



Checking the Fiber Type

To query optical module information, run the display transceiver interface interface-type interface-number verbose command. For example, the following optical module can provide a 500 m



Displaying Optical Module Information

Procedure Run the display transceiver [interface interface-type interface-number , slot slot-id] [verbose] command to view information about the optical module on a specified interface.

Checking Optical Module Information of the Interface

Run the display interface interface-type interface-number transceiver [verbose] command to check optical module information. display interface 10ge 1/0/1 transceiver verbose



Understanding Optical Modules

If an optical module is installed in a running device, you can run the display interface transceiver command to view parameters of the optical module, including the center wavelength, transmission



The Ultimate Guide to SFP Modules (2026): Types,

What is an SFP? SFP (Small Form-factor Pluggable) is a compact, hot-pluggable network interface module used to connect network devices (switches, routers,



Contact Us

For datasheets, pricing, or custom high-speed optical interconnect solutions,
please visit:
<https://www.syropy.com.pl>