

Huawei Layer 3 Access Switch

REINFORCED VIRGIN PVC TRUNKING

Superior Crush Resistance



37.6MPA
Tensile Strength



2856MPA
Elastic Modulus



9.8KJ/M²
Impact Strength



1.54G/CM
Density





Huawei Layer 3 Access Switch



Example for Configuring a Layer 3 Switch to Work with a Router for

Layer 3 switches can work at Layer 2 and Layer 3 and be deployed at the access layer or aggregation layer as user gateways. This example uses router configurations of AR3600 V200R007C00SPC00.

Campus Switches

Huawei S Series Switches fully accommodate metro core, aggregation, edge aggregation, and access networking requirements, and are capable of building an



Advancing Industrial All Intelligence

Huawei Enterprise provides a broad range of innovative ICT infrastructure products and solutions for vertical industry and enterprise customers worldwide.

VLAN Routing with Layer 3 Switch on Huawei ? IpCisco

VLAN Routing with Huawei Layer 3 Switches. Here we will focus How to Configure VLAN Routing on Huawei devices with a configuration example.



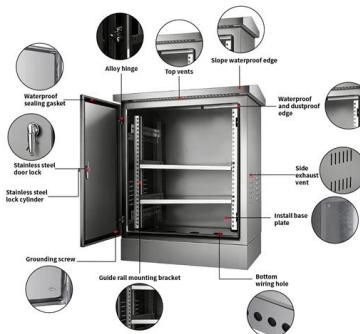
Huawei Layer 3 Switch: Routing Revolution? Your Network

The Huawei Layer 3 Switch enforces micro-segmentation using access control lists (ACLs) . Think concrete barriers between network neighborhoods. An infected billing PC gets contained instantly;



Access port config (Huawei)

How to set access port config on Huawei switch? An access port belongs to and carries the traffic of only one VLAN within 2-layer switch. Traffic is both



Huawei Network Switches in Nigeria for sale Prices on Jiji

Jiji 31+ Huawei Network Switches for sale in Nigeria From ? 25,000 Wi-Fi, LAN & enterprise gear Boost your speed today!



Example for Switching an Interface to Layer 3 Mode

S300, S500, S2700, S5700, and S6700
V200R022C00 Configuration Guide - Interface
Management Example for Switching an Interface
to Layer 3 Mode Networking Requirements In



Huawei CloudEngine S5735-L12T4S-A 12-Port Gigabit Layer 3

Compact Layer 3 managed switch with 32 Gbps /
336 Gbps switching capacity, 24 Mpps
forwarding rate, VLAN security, USB port, and
enterprise management.

Network Switches , Huawei Enterprise

Huawei campus switches are ideal for building
future-proof campus networks with simplified
management, high reliability, and service
intelligence, across industries



Example for Switching an Interface to Layer 3 Mode

To enable SwitchA and SwitchB to communicate
with each other and provide high link bandwidth,
Layer 3 Eth-Trunk interfaces need to be used
between SwitchA and SwitchB. In addition,

Huawei Layer 3 Switch: Routing



Revolution? Your Network

Enter the Huawei Layer 3 Switch: it doesn't just connect devices; it understands destinations. By blending switching speed with true routing intelligence, it collapses



Example for Configuring a Layer 3 Switch to Work with a Router for

Layer 3 switches can work at Layer 2 and Layer 3 and be deployed at the access layer or aggregation layer as user gateways. Switch configurations used in this example apply to all versions

Layer 3 Switching

Layer 3 Switching Background of Layer 3 Switches In early stage of network deployment, most local area networks (LANs) were established using Layer 2 switches, and routers completed



How to Configure Huawei Layer 3 Switch with AR Router for Internet

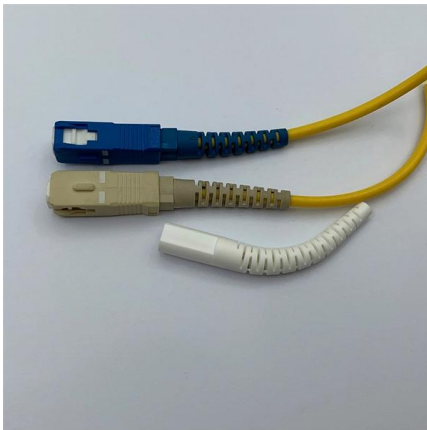
In enterprise campus networks, a common design is to use a Huawei Layer 3 campus switch as S5730 series, while an upstream router provides Internet access. This article provides a

Huawei CloudEngine S5735-S24T4X 24-Port



Gigabit Layer 3 Managed Switch

Layer 3 managed switch with 24 Gigabit ports, 4 x 10G SFP+ uplinks, VLAN segmentation, ACL security, dual power redundancy, and iStack stacking.



Example for Switching an Interface to Layer 3 Mode

Example for Switching an Interface to Layer 3 Mode Networking Requirements As shown in Figure 3-15, PC1, PC2, PC3, and PC4 are on four network segments, and SwitchB, SwitchC,

VLAN Routing with Layer 3 Switch on Huawei

In our VLAN Routing Huawei Configuration Example, firstly we will configure, each interfaces of the L3 Switch. We will set these interfaces as access and we will give their default VLAN.



Switches

Switches After more than 20 years of unremitting efforts and stable development, Huawei provides extensive experience in Ethernet switches. With multiple



Example for Configuring a Layer 3 Switch to Work with a Router for

Layer 3 Switch Layer 3 switches provide the routing function, which indicates a network-layer function in the OSI model. Layer 3 switches can work at Layer 2 and Layer 3 and be deployed at the access



Layer 3 Switching

In a summary, a Layer 3 switch provides high-speed Layer 3 switching through one routing process (forwarding the first packet to the CPU and creating a hardware Layer 3 forwarding entry) and

The Network DNA: Networking, Cloud, and Security

Master networking, cloud, and security with in-depth analysis, tutorials, and research. Stay ahead of the curve with our expert tech blog.



CloudEngine S5731-S Series Switches , Huawei Enterprise

The CloudEngine S5731-S series offers a range of standard gigabit access switches, with all-GE electrical/optical ports and fixed 10 GE uplink ports. Built on Huawei's



Network Switches , Huawei Enterprise

Huawei Ethernet Switches Turbocharge your enterprise network with high-performance, high-availability for resilient services and simplified management.



Newsroom

Huawei's official news feed, bringing you real first-hand information

Netzwerk-Switches von Huawei

Switches von Huawei werden in Bereichen wie Finanzen, Internet, Einzelhandel, Bildung, Produktion und Behörden eingesetzt. Mit den Lösungen, die in Gartner's

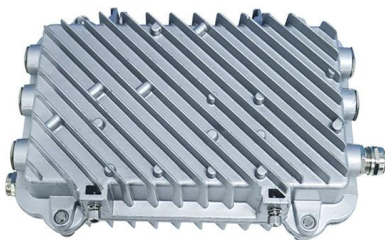


Deploying an S Series Switch as a Layer 3 Switch on a LAN

Layer 3 Network Configurations Provides guidance for configuring protocols such as routing, multicast, and VRRP.

Huawei S6320-HI Series Switches Product

Huawei S6320-HI Series Switches Product Brochure Huawei S6320-HI series switches are the first-of-their-kind fixed agile switches with 10GE downlink and 40GE/100GE uplink ports. They are ideal for



Huawei ensp-vlan routing-Layer 3 switching

VLAN routing can be implemented through a Layer 2 switch and a router, or through a Layer 3 switch. Limitations of VLAN: VLAN isolates the Layer 2 broadcast domain and strictly isolates any Layer 2

Huawei S3700 Series Switches Product Datasheet

Product Overview The S3700 series enterprise switches (S3700s) are next-generation energy-saving Layer 3 switches. The S3700 utilizes cutting-edge hardware and Huawei Versatile Routing Platform



Contact Us

For datasheets, pricing, or custom high-speed optical interconnect solutions, please visit:
<https://www.syropy.com.pl>