

Huawei Fiber Optic Router Downlink Optical





Overview

It provides downlink PoF ports (through advanced fiber with power (AFwP)) and works with optical APs to implement Wi-Fi wireless access. With the rapid growth of bandwidth-hungry services such as 4K, 8K, VR, and HD video, the fiber to the home (FTTH) industry has attracted wide attention from operators, and is now in a period of explosive growth. Huawei's innovative FTTH solution has been adopted by more than 350 leading global. Against this backdrop, home users require Wi-Fi networks that feature high bandwidth, low latency, wide coverage, and high concurrency. An optical fiber is a carrier of optical signals and transmits optical signals over a short distance. This router enables users to enjoy ultrafast internet speeds of up to 4 Gbps with Wi-Fi 6 technology.



Huawei Fiber Optic Router Downlink Optical



Connecting Stack Cables

Select stack cables before connecting them. For details about the stack cables that apply to different ports on different switch models, see Stack Support and Version Requirements in the product

What Is an All-Optical Ethernet Switch?

All-optical Ethernet switches are a type of switch that provides optical uplink and downlink ports, making them an ideal choice for building an all-optical campus network. They can function as



Huawei FTTH Solution Overview , PDF , Fiber To The X , Electronics

The document introduces Huawei's FTTH (Fiber To The Home) solution, detailing its components: OLT, ODN, and ONT, and their roles in providing fiber connectivity.

HUAWEI Routers

Explore HUAWEI's latest routers. Learn about HUAWEI WiFi Mesh Series, HUAWEI WiFi BE/AX Series, HUAWEI CPE Series, and HUAWEI Mobile WiFi Series.



Installing Optical Transceivers and Connecting Optical Fibers

Before connecting optical fiber cables, read the following precautions: Do not overbend optical fibers, and the radius should not be shorter than 40 mm. Do not bundle the optical fibers too tight.

Optical Access

Based on PON technology, passive all-optical network access solutions enable access by any media, tailored to enterprises, ISPs, and MSOs.



Fibre to the Home: Check your wiring and set-up

Step 1: Check your Router Check all cables are firmly plugged in. The Ethernet cable must be plugged into the WAN port of your Router and the other end into the Huawei ONT PORT1/LAN1 port - the



ONT vs ONR: What's the Difference?

Learn the difference between an ONT and ONR, which fibre broadband setup suits your home, and how to use your own router with an ONR.

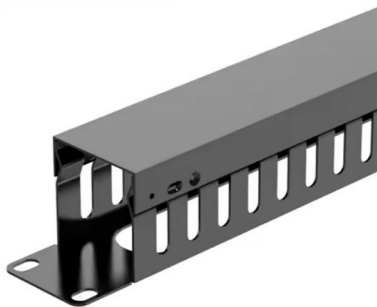


Huawei OptiXstar V166a-20 Router (FTTR = Fibre-to-the)

Das Huawei OptiXstar V166a-20 ist ein zentrales Gerät-FTTR für den Huawei iFTTR OptiXstar F50. Er nutzt die GPON- und Wi-Fi 6-Technologien, um einen

Introduction of Optical Modules on Huawei Switches

When Huawei switches are connected to other products such as routers, comply with the preceding optical module interoperation rules. The following describes the



EchoLife EG8145V5

The Huawei EchoLife EG8145V5 is a routing-type ONT in the Huawei all-optical access solution. It uses the GPON technology to implement ultra-broadband

HG8245H Datasheet PDF - ONT Router



Manual - Huawei

The EchoLife HG8245H, an optical network terminal (ONT), is a high-end home gateway in Huawei TTH solution. By using the GPON technology, ultra



Pakistan ISP Marketplace & Networking Solutions Hub By LCN

Annika Fiber Optics Zhang and Dante Resurreccion 2 reactions · 7 comments
Mohammad Salim

Optical Fiber

One end is connected to an optical interface of router. The other end is connected to an optical distribution frame (ODF) or an optical interface of the upstream device or another device.



Router , HUAWEI Support Global

The Parental controls feature of the router can limit the amount of time the minors spend on the Internet and restrict them from accessing certain websites to protect



FTTR for Home-Lösung von Huawei

Die FTTR-Lösung von Huawei erweitert den Glasfaserzugang auf einzelne Räume in Ihrem Heim und bietet verschiedene Gigabit Wi-Fi 6 Master/Slave FTTR



Mini-OLT Huawei OptiXstar F1001-AC

It supports Ethernet GE or XG-PON upstream transmission and implements all



Huawei Fiber Optic Router

Shop high-quality huawei fiber optic routers for reliable internet. Enjoy fast speeds, dual-band WiFi, and advanced features. Perfect for home and office use.



Huawei FTTR for Home , FTTR-B Solution , Fiber to the

This solution uses fibers that feature small size, light weight, ultra-long service life, anti-EMI, and unlimited bandwidth evolution. It solves the last-meter coverage



Ubiquitous Fiber Networks with Huawei ODN 3.0

With Huawei's core concept for ODN construction centering on full and dense coverage coupled with short and easy access, Huawei's ODN 3.0 solution uses



Fiber to The Room (FTTR) Solution

The Huawei FTTR solution uses dedicated pipe routing tools, innovative micro optical cables, and transparent optical cables, which are easy to be routed through pipes without fiber splicing.

Optical fiber: the foundation of smart cities

And of all the connectivity methods available, optical fiber is the most environmentally friendly. Huawei's industry-leading solutions make it easier to



Connecting Optical Fibers and Ethernet Cables

Connecting Optical Fibers The device can transmit upstream data over optical fibers. Optical fiber connectors (also called optical fiber tubes, which need to be purchased separately) must be used



CloudEngine S5736-S Series Switches , Huawei Enterprise

CloudEngine S5736-S series switches are all-optical switches that feature 48 downlink optical ports and four uplink 10 GE ports. Learn more.

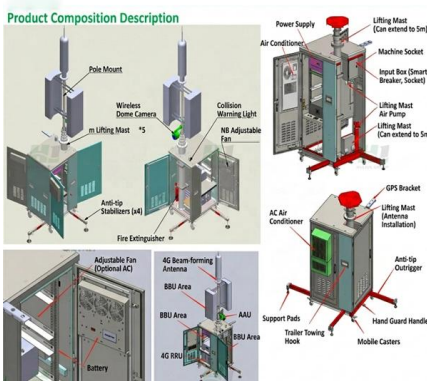
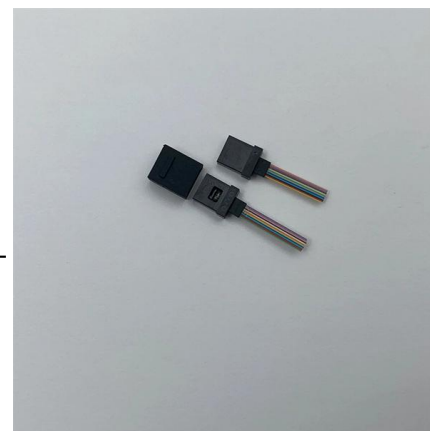


Huawei OptiXstar P603E Quick Start 02

The status of PON and LOS reflects the connection between ONU and the optical line terminal (OLT). The following table describes the status of the PON and LOS LEDs.

HG8310M Huawei Optical Fiber Modem XPON ONT

Transform your digital experience with the HUAWEI ECHOLIFE HG8310M HG8010H XPON ONT English Version. Driven by cutting-edge fiber-optic technology, this ONT unveils boundless



Optical Fiber/Optical Cables/AOC Routing and Bundling

This section uses the optical fiber as an example to describe how to lay out and bundle cables. The optical cable and AOC differ from the optical fiber only on the connector. For details about optical



Contact Us

For datasheets, pricing, or custom high-speed optical interconnect solutions,
please visit:

<https://www.syropy.com.pl>