

Huawei Core Switch System Integration





Huawei Core Switch System Integration

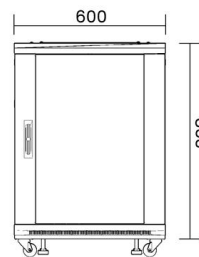


Huawei Technical Support

This webpage provides cases for deploying networks using gateway, core switch, and access switch to enhance connectivity and efficiency.

(Video) Director Tech Talk: Introduction to HUAWEI CloudEngine

Huawei CloudEngine S16700 series flagship core switches are next-generation flagship modular core switches designed for high-end campus networks. They are designed to improve user experience,



S Series Switches Stack Deployment Best Practices

S Series Switches Stack Deployment Best Practices This document describes the best practices for stack deployment, including device selection, deployment, networking deployment, stack setup

Huawei CloudEngine S8700 Core Switches , Modular

Explore Huawei CloudEngine S8700 modular chassis switches, designed for enterprise cores and data centers, these switches deliver up to 16



Stack Scheme

On the aggregation/core layer, high-performance CE12800 series switches are deployed to set up a stack, which connects to access devices through inter-chassis links to form a loop-free network.



Intelligent & Simplified 5G Core Network

One Core The microservice-based 5G core network is fully integrated with 2G, 3G, 4G networks and inherits all existing services. Its centralized control plane and



SME Network Solution Typical Configuration Examples

"Gateway + Switch + AP" Networking: Local Entire-Network Deployment (EasyWeb) "Gateway (S380) +Core Switch +Access Switch +AP" Networking: Huawei eKit Cloud Management





Building a Hybrid Network: Huawei Core & NSComm Access

Maximize your IT budget. Learn how to build a high-availability hybrid network using Huawei Core switches and cost-effective NSComm Access switches.

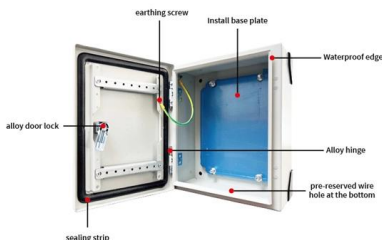


Stack Scheme

If there are 40 access switches and every two access switches are virtualized, there are still 20 managed nodes. Unified control plane limits the number of physical nodes supported by the system.

CloudEngine 7800 Series Data Center Switches

Product Overview Huawei CloudEngine 7800 series (CE7800) switches are next-generation 40G Ethernet switches designed for data centers and high-end campus networks. The switches provide



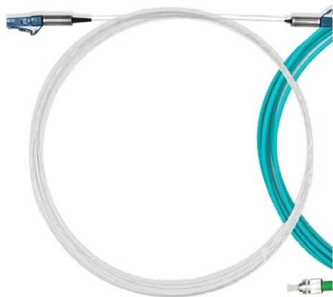
Why Is the Huawei CloudEngine 12800 Core Switch a Game

In today's hyper-connected digital landscape, the backbone of any enterprise network relies on one critical component: the core switch. The Huawei CloudEngine 12800 Core Switch isn't just another



CloudEngine Series Data Center Switches

Huawei CloudEngine series switches are high-performance cloud switches designed for next-generation data centers and high-end campus networks. The series



Configuring the Core Switch

Configuring the Core Switch Context In this scenario, IP addresses of the interfaces connecting the core switch to the BRASs and firewalls and OSPF need to be configured on the core

Standalone AC Solution: Core Switches and ACs Function as the

Aggregation switches set up stacks to implement device-level backup and increase the interface density and forwarding bandwidth. In this example, core switches and standalone ACs function as the



Huawei Core Switch: Network's Beating Heart? Can Centralized

The Huawei core switch isn't about moving data--it's about orchestrating it. Picture a hospital network: MRI machines streaming high-res scans, telehealth sessions in progress,



Native AC Solution: Core Switches Function as the Gateway for Wired

In this example, a CSS of core switches functions as the gateway for wired and wireless users on the entire network and is responsible for routing and forwarding of user services on the entire network.



Configuring the Core Switch

When configuring interfaces and routes, you need to specify a VPN instance to isolate public network routes from the return routes from the firewalls destined for the egress routers through

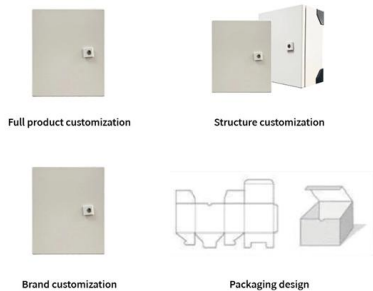


Native AC + Policy Association Solution: Core Switches Function as

Policy association is deployed between core switches and access switches. The core switches function as control devices to centrally authenticate users and manage user access policies, and access



OEM/ODM
CUSTOMIZATION AVAILABLE



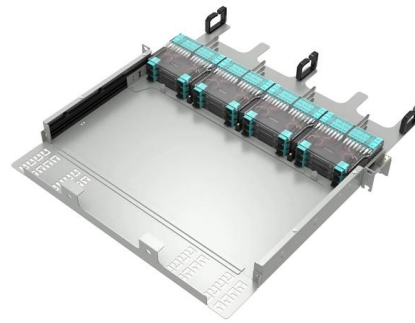
Configuring Devices to Be Managed by the Controller (in the Hybrid)

Context On a large or midsize campus network, switches running V600 (such as the S8700) can function as core switches and be deployed together with switches running V200 (such as



Huawei Launches the All-New CloudEngine S-Series

Huawei announced a major leap in campus networking by unveiling 16 new models of CloudEngine S-series access, aggregation, and core switches.

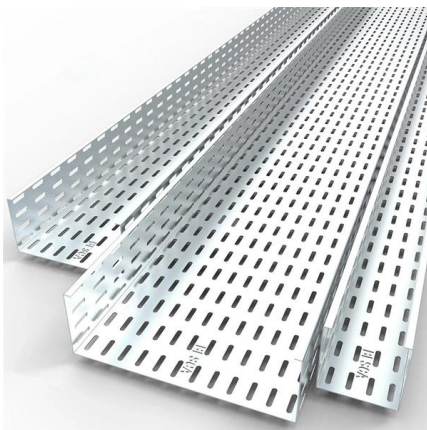


CloudEngine S12700H Series Switches

CloudEngine S12700H Series Switches
CloudEngine S12700H series switches are Huawei's next-generation modular core/aggregation switches designed for high-end campus networks in the all

Huawei CloudEngine S8700 Core Switches , Modular

The Huawei CloudEngine S8700 Series sets a new standard for modular core switching--featuring up to 16Tbps throughput, full MACsec



Configuring VSs

Networking Requirements As shown in Figure 2-16, SwitchA is a core switch on the network and carries multiple Layer 2 and Layer 3 services. On the network, all services need to be processed by the



Network Switches , Huawei Enterprise

Huawei campus switches are ideal for building future-proof campus networks with simplified management, high reliability, and service intelligence, across industries



Why Does Your Network Need A Huawei Core Switch? Is Outdated

Huawei's architecture supports seamless integration with SDN (Software-Defined Networking), allowing centralized control over distributed networks. This means IT teams



Core Switch Functioning as the Native WAC

Core Switch Functioning as the Native WAC In the virtualization solution, if a native WAC is required for deploying wireless services, it is recommended that the border node be used as the native WAC.



Wi-Fi-based Deployment Cases -Gateway + Core Switch + Access

With the wizard-based network configuration function, the interconnection subnet, interconnection VLAN, and route between the core switch and the gateway are automatically configured, greatly improving



Contact Us

For datasheets, pricing, or custom high-speed optical interconnect solutions, please visit:

<https://www.syropy.com.pl>