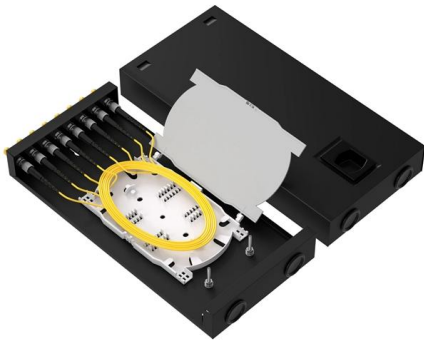


Huawei Certification for Optical Modules





Huawei Certification for Optical Modules

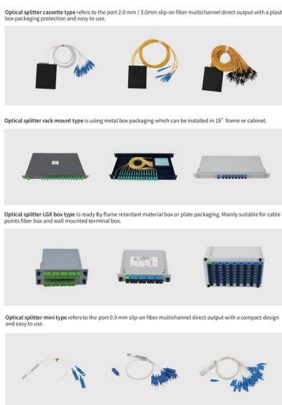


Compatibility Analysis of Optical Modules: Covering Global

Huawei: Supports S6720S series switches (such as 10G SFP+, 40G QSFP+ modules) and 25G DWDM SFP28 modules for 5G fronthaul scenarios. Cisco: Adapts to 2900, 4000, 5000, and

ALM-135471444 hwOpticalUnauthorized_Common Alarms_V600

If the optical module is delivered by Huawei in the early stage, the system is not affected. If not, the optical module may be abnormal, causing service interruption.



Huawei OSFP-800G-2DR4 Optical Module Datasheet

Huawei offers a comprehensive series of pluggable optical modules in the Huawei portfolio. The wide variety of modules gives you flexible and plug-and-play options for all types of interfaces. These

Leading Solar Solutions for a Greener Future , HUAWEI

HUAWEI FusionSolar advocates green power generation and reduces carbon emissions. It provides smart PV solutions for residential, commercial, industrial,

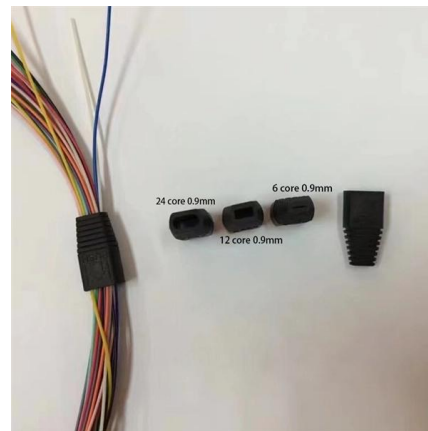


SFP-10G-LR, Huawei SFP+ Optical Transceiver, 10G,

The Huawei Optical Transceiver SFP-10G-LR is a versatile and high-performance 10G SFP+ module. Designed for single-mode fiber, it offers reliable 10km

Telecom Optical Module Market Research Report 2033

The Telecom Optical Module market was valued at \$24.8 billion in 2025 and is projected to reach \$47.3 billion by 2033, growing at 8.4% CAGR.



Cisco C9200-NM-4X 4-Port 10G SFP+ Network Module

High-performance 4-port 10G SFP+ module for Cisco Catalyst 9200 switches. Hot-swappable, dual-rate support, and CE certified for enterprise networks.



How to Identify Huawei-Certified Optical Modules

To confirm whether optical modules you use have been certified by Huawei, contact technical support personnel. If the optical modules you use are delivered after July 1, 2013, use

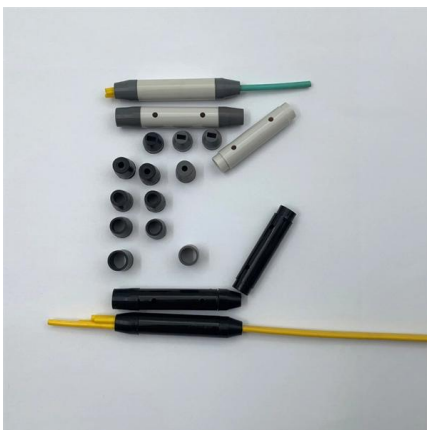


Optical Modules for Huawei S Series Switches

Non-Huawei-certified optical modules are not verified through interoperability tests with Huawei switches and may cause unexpected problems when they are used on Huawei switches.

Cisco PWR-C6-125WAC 125W AC Power Supply for Catalyst 9200L

The Cisco PWR-C6-125WAC is a high-reliability AC power supply module designed specifically for the Cisco Catalyst 9200L Series switches. As a critical component of the Catalyst 9000 ecosystem, this



Huawei LX Compatible SFP Modules: Strategic Inventory Guide

The Huawei LX standard is built upon the IEEE 802.3z (1000BASE-LX) protocol, which defines the physical layer requirements for Gigabit Ethernet over fiber. These modules operate at a 1310nm



Huawei OSX010000 SFP+ 10G Single Mode Optical

Huawei OSX010000 SFP+ 10G transceiver for single-mode fiber, 1310nm wavelength, 10km range. Compliant with 10Gbase-LR standard.



Empowering Enterprise Connectivity: An In-Depth Look at the Huawei

Discover the details of Empowering Enterprise Connectivity: An In-Depth Look at the Huawei S5735-L48P4X-A Switch at LonRise Equipment Co. Ltd., a leading supplier in China for Optical

Advancing Industrial All Intelligence

Huawei Enterprise provides a broad range of innovative ICT infrastructure products and solutions for vertical industry and enterprise customers worldwide.



huawei optical module , huawei networking products

Huawei switches must use Huawei-certified optical modules. Non-Huawei-certified optical modules cannot ensure transmission reliability and may affect service stability.



01-09 PLUGGABLE MODULES FOR INTERFACES

Non-Huawei-certified optical modules cannot ensure transmission reliability and may affect service stability. Huawei is not responsible for any problem caused by the use of non-Huawei-certified optical



Important Notes About Using Optical Modules Certified for Huawei

To determine whether optical modules delivered for Huawei S switches before January 1, 2016 are certified ones, contact Huawei technical support. If your optical modules are delivered after

Huawei Unveils StarryLink Optical Modules That Deliver

To address these challenges, Huawei's StarryLink optical modules deliver a high-quality network experience with three key capabilities:
Spanning:



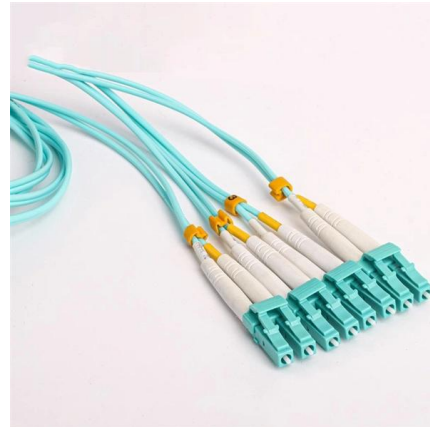
01-04 PLUGGABLE MODULES FOR INTERFACES

During certification of optical modules for Huawei switches, Huawei completes comprehensive functionality verification to ensure quality of optical modules. The verified items include optical



400G Optical Modules 2026 Guide: DR4 vs. FR4 vs. LR8 Lab

400G FR4 delivers ~40% better fiber utilization in campus backbones LPO-compatible modules reduce power consumption by ~2.5W per port For 2026 deployments, prioritizing LPO



Huawei certification testing with Pearson VUE

Huawei Certification Huawei Certification is in line with the company's "Platform + Ecosystem" development strategy, and its new ICT infrastructure featuring "Cloud-Pipe-Device"

Huawei announces all-new Huawei TruSense System

Huawei's response to this demand is a system that integrates all of the company's latest advances in vital sign monitoring -- HUAWEI TruSense



How to Choose the Right Optical Transceiver in 2025

Learn how to select the right optical transceiver for your switch or router. Compare SFP, SFP+, QSFP28, Cisco SFPs, and Huawei modules with



How to Identify Huawei-Certified Switch Optical Modules

A switch must use optical or copper modules that have been certified for use on Huawei S switches. Non-certified optical or copper modules cannot ensure transmission reliability and may



Newsroom

Huawei's official news feed, bringing you real first-hand information

8 Pluggable Modules for Interfaces

To determine whether optical modules delivered for Huawei S switches before July 1, 2013 are certified ones, contact Huawei technical support. If your optical modules are delivered after July 1, 2013, use



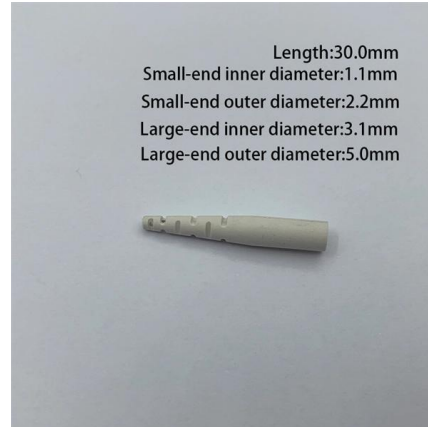
All Products and Solutions

Directory of Huawei enterprise IT infrastructure products, solutions, and services.



Optical Modules in General-Purpose Computing Scenarios

Huawei offers a comprehensive portfolio of pluggable StarryLink optical modules for data center networks, with various models providing flexible plug-and-play solutions tailored to diverse interface



What Is StarryLink Optical Module? Why Do We Need It?

The StarryLink optical module is a core component developed by Huawei for data center networks. It delivers ultra-long-distance transmission, exceptional reliability, and enhanced security,

Contact Us

For datasheets, pricing, or custom high-speed optical interconnect solutions, please visit:
<https://www.syropy.com.pl>