

Huawei Access Switch Function Introduction





Huawei Access Switch Function Introduction

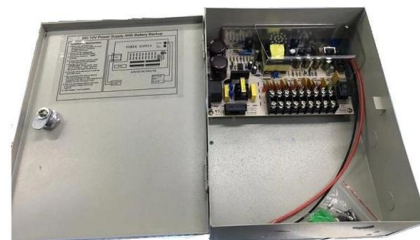


Wi-Fi-based Deployment Cases -Gateway + Core Switch + Access

With the wizard-based network configuration function, the interconnection subnet, interconnection VLAN, and route between the core switch and the gateway are automatically configured, greatly improving

Configuring Access Port and Trunk Port on Huawei Switch

In this tutorial, we will guide you through the process of configuring access and trunk ports on Huawei Switches. We will explain the difference between access and trunk ports, and show you how to



Configuring Cisco ISE to Authenticate Common Access Users and

This document provides typical configuration examples for interoperation between Huawei switches and mainstream IP phones, Cisco ISE authentication servers, Cisco ACS authentication servers, Aruba

forum.huawei

We're sorry but web site doesn't work properly without JavaScript enabled. Please enable it to continue. Loading



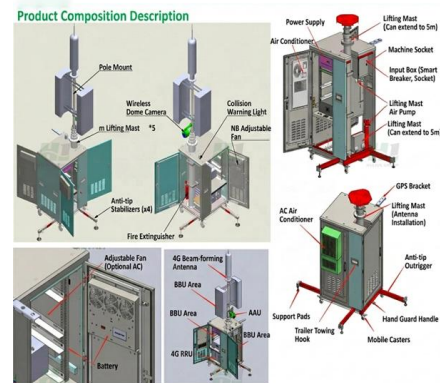
01-03 NETWORK ACCESS CONTROL

As shown in Figure 3-1, the core switch functions as the wired authentication control point and wired policy enforcement point. Policy association is deployed between the core switch and access



Switches

Switches After more than 20 years of unremitting efforts and stable development, Huawei provides extensive experience in Ethernet switches. With multiple



Configuring a MAC Access Profile

The device uses MAC access profiles to uniformly manage MAC users access configurations. Before configuring MAC address authentication, you need to create a MAC access profile.





Configuring Aggregation and Access Switches to Be Managed by the

On the core switch, configure a management subnet for aggregation and access switches, enable the DHCP server function on the gateway interface of the subnet, and enable the function of



Access Control System

The access actuator is the control component for the aisle door in a smart module. It connects to the ECC800-Pro controller over FE port, wireless networking (802.15.4). It opens the magnetic lock by

Access Control Design

The access switch functions as the authentication enforcement point to control user access. Users can access the network only after being authenticated successfully.



S9700 Series Switches Product Description

S9700 Series Switches Product Description This document describes the positioning, characteristics, architecture, link features, service features, application scenarios, operation and maintenance



Configuring Aggregation and Access Switches to Be Managed by the

In this way, when configuring aggregation and access switches to be managed by the controller, you can configure the core switch as the management subnet gateway of the aggregation and access



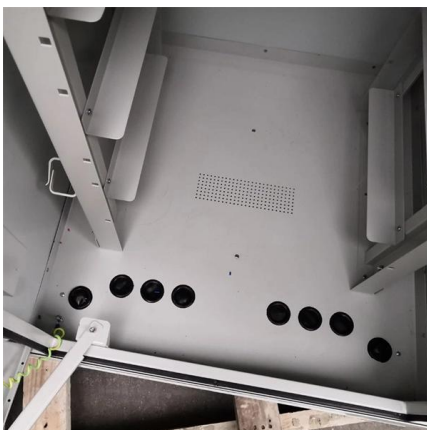
Huawei Fixed Switches Overview

In data centers, the S6700 switches function as access switches to provide 10G access. On a campus network, the S6700 switches connect to



Access Layer (Access Switch)

The access layer is the edge of a campus network, which provides diverse access modes to PCs, network cameras, printers, IP phones, and wireless terminals. It is the first tier of the campus



AC6508 Access Controller

AC6508 is a small-capacity, fixed wireless Access Controller (AC) for small- and medium-sized enterprises. It can manage up to 512 Access Points (APs) and



huawei networking products , huawei switches and routers

The Huawei S1700 switches are next-generation energy-saving Ethernet access switches. The S1700 uses high-performance hardware, which offers a wide array

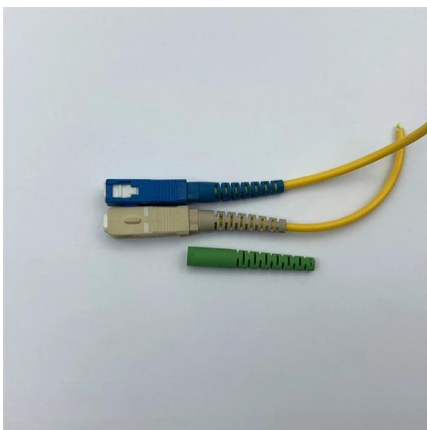


Typical ACL Configuration

As shown in Figure 3-239, the Switch that functions as the gateway is connected to PCs, and there are reachable routes to all subnets on Switch. The administrator wants to block network access of PC1

Huawei Access Switch: Your Network's Silent Backbone? Can

The Huawei access switch isn't just another box in the server room--it's the linchpin of a resilient, agile network. By blending enterprise-grade robustness with user-friendly



Configuring Access Devices

Configuring Access Devices Context To ensure policy strengths without increasing complexity of policies on large campus networks, deploy policy association, which allows access devices to only implement



Huawei Access Switch: Your Network's Silent Backbone? Can

But let's be real: not all switches are created equal. While flashy core switches grab headlines, it's the access switch that often determines whether your network thrives or stumbles. So, what makes



Configuring Portal Authentication for Access Users on Huawei Agile

This document provides typical configuration examples for interoperation between Huawei switches and mainstream IP phones, firewalls, routers, Microsoft NLB servers, multi-NIC servers, Cisco switches,

01-03 NETWORK ACCESS CONTROL

In the traditional campus network access control solution, network access control (NAC) authentication and access control list (ACL) policies are implemented. In Huawei CloudCampus Solution, functions



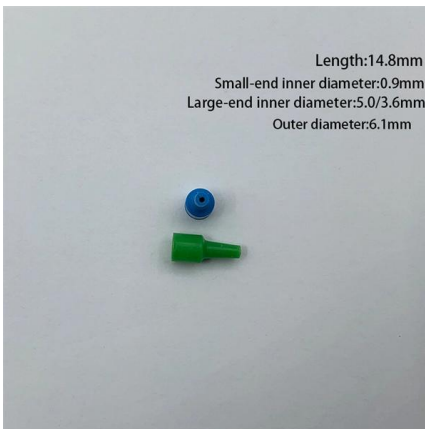
How to enable or disable switch access

Switch access allows people with motor impairments to operate the Huawei smartphone and other mobile devices using one or more switches. With



Network Switches , Huawei Enterprise

Huawei campus switches are ideal for building future-proof campus networks with simplified management, high reliability, and service intelligence, across industries



Storage Switch Recommended Configurations and Configuration

What are the functions of enabling AI Fabric during flow control configuration on an RDMA over Converged Ethernet (RoCE) network? This document will elaborate on these issues to deepen

SME Network Solution Typical Configuration Examples

"Gateway (AR720) + Core Switch + Access Switch + AP + AR180" Networking: Huawei eKit Cloud Management "Gateway + Core Switch + Access Switch + WAC + AP" Networking: Local Entire



Contact Us

For datasheets, pricing, or custom high-speed optical interconnect solutions, please visit:
<https://www.syropy.com.pl>