

# Huawei AI Server Solution





## Overview

---

AI Compute Service offers instant access to immense yet cost-effective AI computing power, a reliable platform for training and running models and algorithms, E2E cloud-based toolchains, and a robust AI ecosystem, with support for all major open-source foundation models. [Tashkent, Uzbekistan, May 20, 2025] At the 4th Huawei Innovative Data Storage Summit, Huawei introduced new AI Data Lake Solution, designed to help industries implement artificial intelligence more effectively. The announcement came during a keynote address titled "Data Awakening, Accelerating. AI data Lake Solution is a combination of data storage + management, resource management, and AI tool chains to efficiently provide a high-quality AI corpus, and faster model training, as well as accurate reasoning efficiency. Huawei Cloud has outlined how it is building AI infrastructure and developing models for industry applications, with deployments spanning manufacturing, healthcare, agriculture, aviation and automotive sectors.



## Huawei AI Server Solution

---



### Everything as a Service: Building the Cloud Foundation

It also allows application developers, data engineers, and AI scientists to work on the same platform and share R& D capabilities and assets, improving multi-team

### Huawei Cloud

Government Big Data Solution National ID Solution Population Census Solution Public Emergency Solution Taxation Solution Universal Language Tech & Huawei Cloud



### Huawei debuts 'nuclear-grade' AI supernode, but power

Huawei has launched its CloudMatrix 384 supernode, a significant advancement in AI infrastructure, now undergoing large-scale deployment at its



### Huawei Atlas AI Computing Platform: A Gift for

The Atlas AI computing platform provides powerful AI computing for customers to handle massive data volumes. It plays an important role in the



### AI Storage

The solution improves inference efficiency and experience by implementing hierarchical management and scheduling of full- lifecycle KV cache, helping



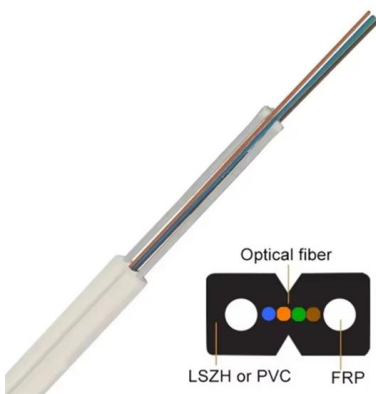
### Huawei Atlas 350 Ascend 950PR Targets Nvidia H20

Huawei said it jointly released 2026 Ascend AI scenario solutions with 20 industry partners, covering use cases including office assistance, AI training labs, electronic medical records,



### AI News , Latest Headlines and Developments , Reuters

Explore the latest artificial intelligence news with Reuters - from AI breakthroughs and technology trends to regulation, ethics, business and global





## Reuters , Breaking International News & Views

Find latest news from every corner of the globe at Reuters , your online source for breaking international news coverage.



## HMS

HMS (HUAWEI Mobile Services) is a set of applications, services, open devices and cloud functions provided by Huawei for its equipment ecosystem, which can



## Ascend AI Cloud Service , Huawei Cloud

Ascend AI Cloud Service offers instant access to immense yet cost-effective AI computing power, a reliable platform for training and running models and



## Huawei Unveils Fully Upgraded AI WAN Solution with AI

At the summit, Huawei introduced its fully upgraded AI WAN Solution, built on an AI-Centric architecture. By redefining experience awareness, computing-network



### Huawei introduces AI data lake solution to escalate

Huawei has launched a new AI data lake solution to boost the intelligence power for enterprises. The company also discussed the advantages



### What Ren Zhengfei didn't say--lessons for Taiwan's

AI Chips + components IC manufacturing IT + CE Server, IPC, cloud computing, IoT China commentary Huawei industrial semiconductors software

### Artificial Intelligence at Foxconn - Two Use Cases

According to a case study published by Huawei, Foxconn partnered with Huawei to adopt its Ascend Smart Manufacturing Solution for AI-powered



### Huawei Launches Hyper-Human Voice Agents for AICC

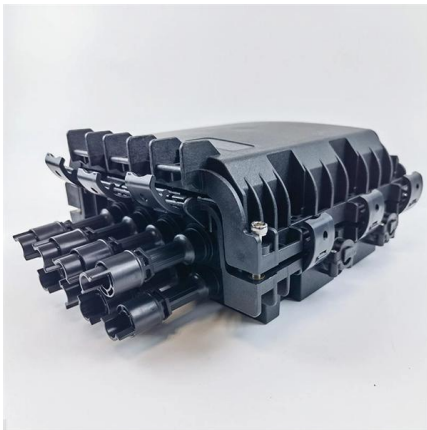
Huawei unveils hyper-human voice agents for AICC, transforming AI customer service with natural conversations, automation, and next-gen contact center intelligence.





### The HUAWEI MateBook Fold is a foldable tablet and

The HUAWEI MateBook Fold is the company's first take on a tablet and laptop in one -- and also the newest breed of foldable in their lineup.



### Tech News , Today's Latest Technology News , Reuters

Find latest technology news from every corner of the globe at Reuters , your online source for breaking international news coverage.

### Huawei's AI servers show tech advancing despite US curbs

TOKYO -- Huawei Technologies is steadily building up its own artificial intelligence infrastructure with homegrown chips and servers, underscoring China's progress



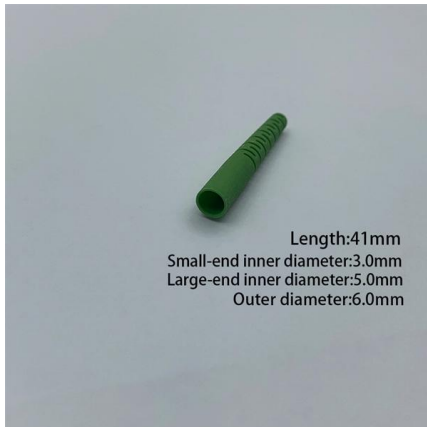
### AI Data Lake Solution

By integrating data storage, data management, resource management, and the AI toolchain, the AI Data Lake Solution delivers a high-quality AI corpus and speeds up model training and inference,



## Intelligent OptiX Network , OptiX , All-Optical Networking

Embracing the AI era, Huawei is committed to its Optical-AI Convergence strategy. By focusing on specific industries and key scenarios, Huawei has upgraded its



### Huawei Unveiled the Latest SuperPoD, Making an AI

At MWC Barcelona 2026, Huawei's President of the Computing Product Line, Seaway Zhang, unveiled the latest SuperPoD product Atlas 950 SuperPoD,

### Huawei Releases AI Data Lake Solution, Positioned to

The AI Data Lake Solution integrates four main components--data storage, data management, resource management, and AI toolchain--to help deliver AI corpus



### Huawei Cloud Expanding AI Infrastructure for Industries

Huawei Cloud has outlined how it is building AI infrastructure and developing models for industry applications, with deployments spanning



### What is Huawei Cloud's Agentic AI Supernode

Huawei Cloud has engineered a new infrastructure and suite of tools designed to manage the specific computational and workflow demands of

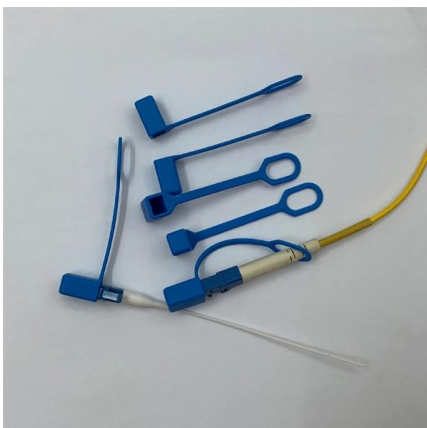


### Huawei Unveils Next-Gen Atlas 950 & 960 SuperPoD AI

Huawei claims to be taking the competition directly to NVIDIA's ground, as their announcement includes unveiling AI clusters.

### Newsroom

Huawei's official news feed, bringing you real first-hand information



### Ascend AI Cloud Service , Huawei Cloud

Ascend AI Cloud Service offers robust, proven solutions for content moderation and fast migration (of CV workloads) to Ascend, accommodating the compute and



## Contact Us

---

For datasheets, pricing, or custom high-speed optical interconnect solutions,  
please visit:

<https://www.syropy.com.pl>