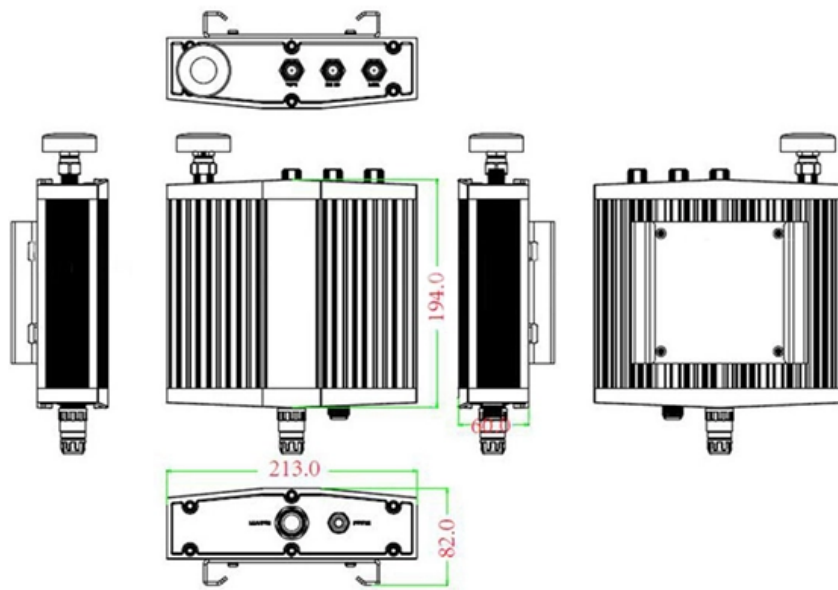




Huawei AI Server Hardware Operators

Mechanical drawing





Huawei AI Server Hardware Operators



Leading Solar Solutions for a Greener Future , HUAWEI

HUAWEI FusionSolar advocates green power generation and reduces carbon emissions. It provides smart PV solutions for residential, commercial, industrial,

Huawei's new AI CloudMatrix cluster beats Nvidia's

At glance Huawei's CloudMatrix 384 is a rack-scale AI system composed of 384 Ascend 910C processors arranged in a fully optical, all-to-all



Huawei Chips Claim 41% of China's AI Server

Huawei Chips Now Claim 41% of China's AI Server Market as NVIDIA's Grip Loosens China's AI hardware landscape shifted dramatically in 2025, with domestic chip makers claiming

Huawei Launches FusionServer Pro V6 Intelligent

Today, the Huawei Computing Product Line officially released the latest member to their family - the next-generation FusionServer Pro V6



Huawei AI Data Center Reference Design

Intelligent iPower improves system reliability and simplifies operation and maintenance for customers. The S-ECO(Super ECO) mode achieves not only 99.1% efficiency and optimal power quality but also



What is China's AI Strategy in 2026? A Comprehensive Analysis of

China AI token usage hit 140 trillion daily in March 2026. A comprehensive look at DeepSeek, Qwen, Huawei Ascend chips, and the state strategy driving it all.



Huawei Atlas AI Computing Solution , Springer Nature Link

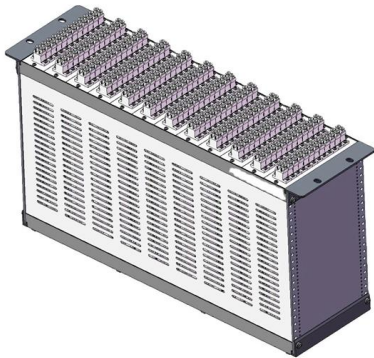
This chapter mainly introduces Huawei Ascend AI processor and Huawei Atlas AI computing solution, focusing on the hardware and software architecture of Ascend AI processor and





Huawei's Ascend and Kunpeng progress shows how

Atlas 900 and Ascend supernodes highlight a scaling-first approach as Huawei trades per-chip efficiency for system-level throughput.



Huawei challenges Nvidia with AI super server

The AI server race heats up as Huawei counters US chip export restrictions. Huawei has unveiled its most powerful AI server, the CloudMatrix

Huawei Atlas AI Computing Platform: A Gift for

The Atlas AI computing platform provides powerful AI computing for customers to handle massive data volumes. It plays an important role in the



Huawei's AI servers show tech advancing despite US curbs

TOKYO -- Huawei Technologies is steadily building up its own artificial intelligence infrastructure with homegrown chips and servers, underscoring China's progress

AI Enabling Intelligent Operations



Huawei Releases its Optical Service Fault Prediction Solution to Build Highly Reliable Optical Networks with AI Huawei Releases Its Latest IoT and AI Products, Creating Intelligent and Connectivity Genes

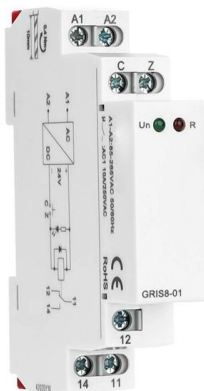


Huawei Ascend 950PR: The 1.56 PFLOP AI Chip vs Nvidia

Huawei launches the Ascend 950PR with 1.56 petaflops and 112GB HBM. How the 6,000 AI chip compares to Nvidia and reshapes China's OB market.

Huawei Ascend 950PR And Atlas 350 Unveiled: FP4 AI Accelerator

Huawei's Atlas 350 launches with Ascend 950PR: FP4 compute, in-house HBM, and a prefill-vs-decode chip split that reshapes China's AI stack.



Technical Specifications

Huawei iBMC supports Intelligent Platform Management Interface (IPMI), Serial over LAN (SOL), KVM over IP, and virtual media, and provides one 10/100/1000 Mbit/s RJ45 management network port.

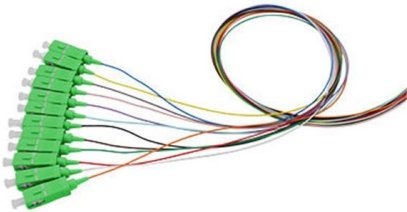


Huawei is a leading global provider of information and communications technology (ICT) infrastructure and smart devices.



Huawei Unveils Next-Gen Atlas 950 & 960 SuperPoD AI

Huawei claims that the Atlas 950 SuperPoD will be the world's largest AI cluster, in terms of the chips onboard, since systems with 500K to 1 million



AI Chips Market Size, Share and Forecast, 2026-2033

AI Chips Market valuation is estimated to reach USD 107.01 Bn in 2026 and is anticipated to grow to USD 592.61 Bn by 2033 with steady CAGR of



2025 Glotel Awards shortlist announced

Freshwave and Midland Metropolitan University Hospital - All operator mobile connectivity HFCL - MahaKumbh 2025 Mobile Data Offload and Wireless





Huawei Carrier

Huawei is a leading global information and communications technology (ICT) solutions provider. Through our dedication to customer-centric



Huawei AI chip gains orders from ByteDance and Alibaba amid

Huawei is gaining renewed traction in the AI semiconductor market, with ByteDance and Alibaba reportedly planning to place orders for its latest AI chip, according to sources familiar with the

Huawei Launches Industry's First AI Core Network,

Huawei will work with telecom operators and industry partners to seize the opportunities of digital and intelligent development, go beyond from



Why liquid cooling will dominate AI data centres in 2026

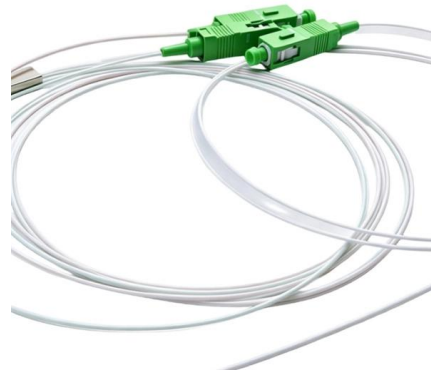
As AI power demands surge into 2026, liquid cooling is becoming the essential technology keeping data centres efficient, stable, and future-ready.





The next big shifts in AI workloads and hyperscaler

In terms of MEP and hardware requirements, training workloads demand advanced switchgear and resilient, uninterruptible power supply systems

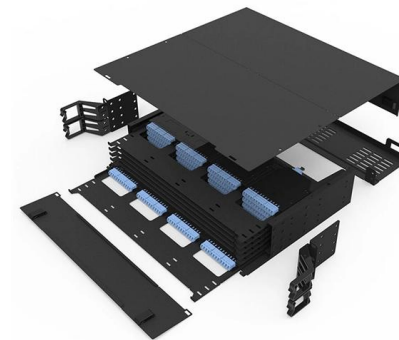


Huawei's Ascend AI chip ecosystem scales up as China

Huawei's AI server hardware, domestic packaging suppliers, and EDA partners now form the backbone of a China-first chip supply chain.

MWC Barcelona 2026: A Deep Dive into Huawei's AI Infrastructure Stack

A technical walkthrough of Huawei's full-stack AI infrastructure from MWC Barcelona 2026, covering Atlas 950 SuperPoD, Ascend NPUs, UnifiedBus, CANN, and OceanStor storage.



Advancing Industrial AI Intelligence

Huawei Enterprise provides a broad range of innovative ICT infrastructure products and solutions for vertical industry and enterprise customers worldwide.



Huawei Cloud Expanding AI Infrastructure for Industries

Huawei Cloud has outlined how it is building AI infrastructure and developing models for industry applications, with deployments spanning



Contact Us

For datasheets, pricing, or custom high-speed optical interconnect solutions, please visit:
<https://www.syropy.com.pl>