

Huawei 580010g optical module





Overview

The MA5800 multi-service access device is a 4K/8K/VR-ready OLT in the gigabit ultra-broadband era. We can provide sales of a large number of new or used transmission equipment, servers, communication power systems, routers, base station equipment, switches, SFPs, storage devices, and other communication products. ● In this document, optical modules are classified based on encapsulation types, and optical modules of each encapsulation type are classified based on interface rates. Huawei SFP-10G-GE-LX Compatible 10G SFP+ Module - Single-mode 1310nm Wavelength for up to 10km with Standard Compatability This high-quality Huawei SFP-10G-GE-LX Compatible 10GBASE-LR SFP+ 1310nm 10km DOM Transceiver.



Huawei 580010g optical module



Why Are Alarms About Optical Modules That Are Not Certified for Huawei

Therefore, alarms about optical modules that are not certified for Huawei Ethernet switches are generated. You can run the transceiver non-certified-alarm disable command to disable the alarm

Optical Access

Based on PON technology, passive all-optical network access solutions enable access by any media, tailored to enterprises, ISPs, and MSOs.

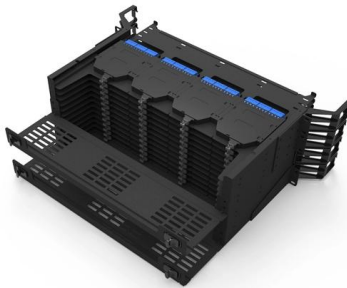


Huawei OLT 5800 01-09 Optical and Electrical Module

A one-channel two-fiber bi-directional GE optical module is connected to two LC optical fibers (one for transmission and the other for reception) to provide one GE

1.25 Gbit/s SFP/eSFP Optical Module

You can use different levels of 1.25 Gbit/s SFP/eSFP optical modules with GE interfaces and 10 GE interfaces. The wavelength of common 1.25 Gbit/s SFP/eSFP optical modules can be 850



Huawei Optical Module Common Models

Optical modules are important devices in fiber optic communication systems. Huawei Optical Module is manufactured by Huawei Technologies Co. and originated in Shenzhen. Huawei Technologies Co.,

How Can I Determine Whether an Optical Module Is Officially

Therefore, you can check whether an alarm is generated to determine whether an optical module is officially delivered by Huawei. The following alarm is generated when an optical module



Huawei 10GE Optical Modules

Buy genuine Huawei 10GE optical modules from GenuineModules with best price and fast worldwide shipping.



Troubleshooting for Optical Modules on Huawei Switch

Troubleshooting for Optical Modules on Huawei Switch Many friends feedback that one problems occurred when using optical modules on switches, now we are

Wall Mount Cabinet Server Racks



10G D optical module 5800, new condition, no scratches

Model Number 10G D optical module 5800, new condition, no scratches Type Enterprise Router Brand Name Hua wei Place of Origin Guangdong, China Use Enterprise Router Network Wireless Lan, Ip,

Hw Gphf Service Board 16-Port Gpon Olt Interface

Huawei GPHF Service Board is a 16-port GPON interface board that works with ONU (Optical Network Unit) devices to implement GPON service access. The MA5800



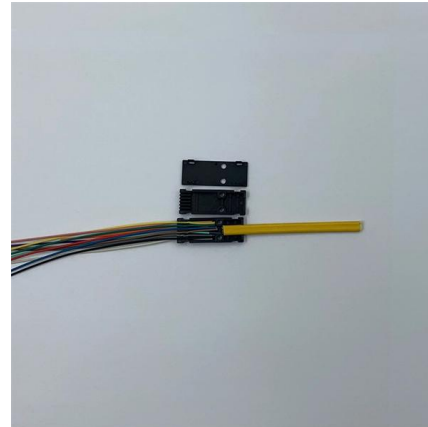
Check Huawei MA5800 Series Datasheet And Price At

Huawei MA5800 Series The Huawei MA5800 Series is a next-generation multi-service Optical Line Terminal (OLT) platform designed for high-density fiber



MA5800 , Access , OLT , FTTH , Huawei Enterprise

The MA5800 multi-service access device is a 4K/8K/VR-ready OLT in the gigabit ultra-broadband era. It supports the PON/10G PON/50G PON/GE/10GE shared



Huawei SFP-10G-USR 10G SFP+ Optical Transceiver

Deploy Huawei SFP-10G-USR 10G SFP+ optical transceiver for short-reach multimode 850nm links up to 0.1km. Check live stock and competitive price.



10Gbps SFP+ Optical Module

10Gbps-SFP+-SMF-1550nm-80km-commercial
Table 1-42 10Gbps-SFP+-SMF-1550nm-80km-commercial specifications



ES5D21G08S00 (8-Port GE SFP Rear Optical Interface Card)

Card Overview The ES5D21G08S00 provides eight GE SFP optical ports for data access and line-rate switching. The ES5D21G08S00 can be installed in a rear card slot of the switch models listed in



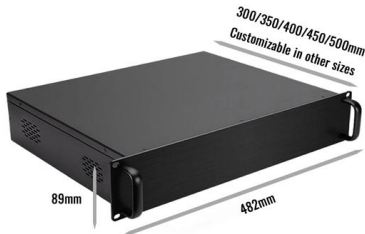
forum.huawei

We're sorry but web site doesn't work properly without JavaScript enabled. Please enable it to continue. Loading



10 Gbit/s SFP+ Optical Modules

10 Gbit/s SFP+ optical modules apply to 10 GE optical ports. The wavelength can be 850 nm, 1310 nm, or 1550 nm, and the transmission distance ranges from 0.5 km (0.31 mi) to 80 km (49.71 mi).



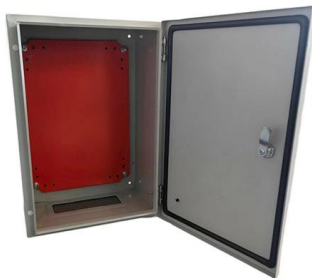
Huawei Technical Support

Discover Huawei's technical specifications and features for 10Gbps SFP optical modules, enhancing connectivity and performance in enterprise networks.



10GE SFP+ Optical Modules

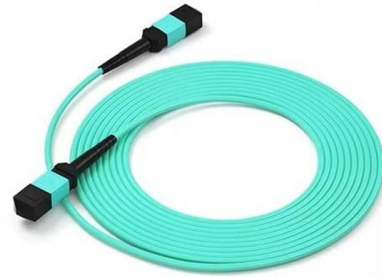
10GE SFP+ Optical Modules OMXD30000 (02318169) OSX010000 (02318170) OSX040N01 (02310CNF) OSXD22N00 SFP-10G-ER-1310 SFP-10G-ER-C SFP-10G-ER-SM1270-BIDI SFP-10G





Huawei Launches Industry's First 800G Tunable Ultra-High-Speed Optical

At the Huawei products and solutions launch in London, Peng Song, President of Huawei's Carrier BG Marketing and Solution Sales Dept, Launched the industry's first 800G tunable



10GE SFP+ Optical Modules

Single-fiber bidirectional (BIDI) optical modules must be used in pairs. For example, SFP-10G-BXU1 must be used with SFP-10G-BXD1.



GE eSFP Optical Modules

GE eSFP Optical Modules LE2MGSC40DE0 LE2MGSC40ED0 S-SFP-GE-LH40-SM1310 S-SFP-GE-LH40-SM1550 S-SFP-GE-LH80-SM1550 SFP-GE-BXU1-SC SFP-GE-EX-C SFP-GE-LX-SM1310



Huawei OSX001001 10Gb/s 1310nm SFP+ 10km LC SM

Deploy Huawei OSX001001 10Gb/s 1310nm LC SM SFP+ for 10km uplinks on MA5600T OLT, ensuring stable fiber access and easy replacement with original



Huawei SFP-10G-GE-LX Compatible 10Gb SFP

This high-quality Huawei SFP-10G-GE-LX Compatible 10GBASE-LR SFP+ 1310nm 10km DOM Transceiver. A cost-effective solution that provides high bandwidth



10GE SFP+ Optical Modules

This document provides an overall description of the CE5800& 6800& 7800& 8800 series switches hardware that versions earlier than V200R020C00, helping you obtain detailed information about

01-08 PLUGGABLE MODULES FOR INTERFACES

The appearance of optical modules in this document is for reference only. Use optical modules certified for the CloudEngine 9800, 8800, 7800, 6800, and 5800 series switches. Non-certified optical



10 Gbit/s XFP Optical Module

HUAWEI AntiDDoS8000 V500R005 Hardware Description 10 Gbit/s XFP Optical Module You can use different levels of 10 Gbit/s XFP optical modules with OC-192/STM-64 POS interfaces



10GE SFP+ Optical Modules

OMXD30000 OSX010000 OSX040N01
OSXD22N00 SFP-10G-BXD1 SFP-10G-BXU1
SFP-10G-ER-1310 SFP-10G-ER-SM1270-BIDI
SFP-10G-ER-SM1330-BIDI SFP-10G-LR-I SFP-10G-
USR SFP-10G



MA5800 , Access , OLT , FTTH , Huawei Enterprise

Huawei SmartAX MA5800 Series The MA5800 multi-service access device is a 4K/8K/VR-ready OLT in the gigabit ultra-broadband era. It supports the PON/10G

Pulling out the optical module and shutdown interface causes the

Solve the problem of alarm indicator steady on by clear the alarm after it is confirmed that customer pull out the optical module and shutdown interface manually



Contact Us

For datasheets, pricing, or custom high-speed optical interconnect solutions, please visit:
<https://www.syropy.com.pl>