

Huawei 1310 Multimode Optical Module





Overview

Huawei SFP-10G-ER-1310 Compatible SFP+ Module is designed for optical communication applications and supports link lengths up to 40 km over LC duplex SMF fiber. High quality Original HUAWEI 10G-1310nm-10km-SM-SFP+ from China, China's leading product market Huawei Optical Transceiver product, with strict quality control Huawei Optical Transceiver factories, producing high quality Huawei Optical Transceiver Products. 02315233 - Genuine Huawei SFP-FE-SX-MM1310 Optical Transceiver, SFP, 100M/155M, Multi-mode Module (1310nm, 2km, LC)Basic InformationModule name: SFP-FE-SX-MM1310Part Number: 02315233Model: SFP-FE-SX-MM1310Form factor: SFPApplication standard: 100BASE. The SFP-FE-SX-MM1310 (part number: 02315233) is a Huawei-certified 100M optical module. However, the Vendor Name field displays the original manufacturer name, instead of HUAWEI. Be the first to review this product! You may return most new, unopened items within 30 days of delivery for a full refund.



Huawei 1310 Multimode Optical Module

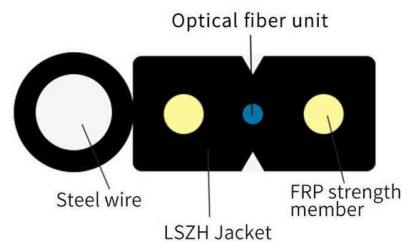


Huawei SFP-10G-ER-1310 Compatible 10G SFP+ ER Module , FiberMall

Huawei SFP-10G-ER-1310 Compatible SFP+ Module is designed for optical communication applications and supports link lengths up to 40 km over LC duplex SMF fiber.

Huawei eSFP-GE-SX-MM850 Gigabit Optical Module Overview

The eSFP-GE-SX-MM850 optical module is a Huawei Gigabit multimode optical module with DOM/DDM support, which is packaged in an SFP package with a center wavelength of 850 nm.



1.25 Gbit/s SFP/eSFP Optical Module

You can use different levels of 1.25 Gbit/s SFP/eSFP optical modules with GE interfaces and 10 GE interfaces. The wavelength of common 1.25 Gbit/s SFP/eSFP optical modules can be 850

Huawei SFP-GE-LX-SM1310 Compatible 1.25Gbps SFP 1000BASE

Huawei SFP-GE-LX-SM1310 compatible optical transceiver is a dual fiber 1000Mbps Small Form-factor Pluggable SFP module for use in 1000BASE Ethernet network. SFP LX provides 1Gb/s throughput



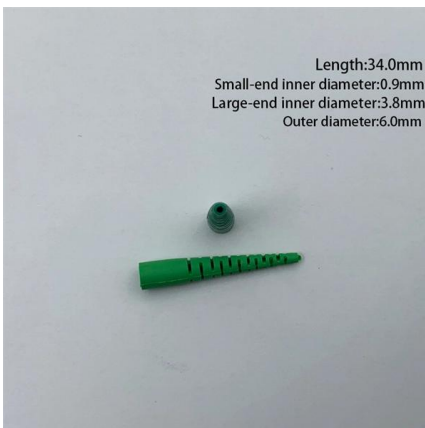
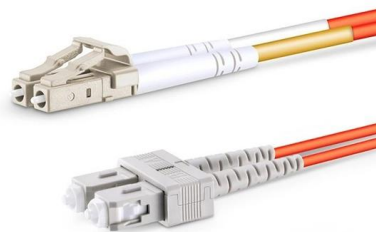
Huawei SFP-FE-SX-MM1310 SFP 100BASE-FX Multimode Transceiver

Der SFP-FE-SX-MM1310 100BASE-FX LC Duplex SFP kompatibel zu Huawei hat eine Empfangsfunktion (Receiver mit 1310nm) und eine Sendefunktion (Transmitter mit 1310nm) für die



Huawei SFP-10G-LR Compatible 10GBASE-LR SFP

Huawei SFP-10G-LR Compatible 10GBASE-LR SFP+ Transceiver module data sheet (SMF, 1310nm, 10km, LC connector) from fiberopticdistribution



Huawei Optical Transceiver eSFP GE Single-Mode Module

The Optical Transceiver eSFP GE Single-Mode Module (1310 nm, 10 km, LC) is a high-performance Gigabit Ethernet optical module designed for long-distance fiber networking applications. Engineered



Original HUAWEI 10G-1310nm-10km-SM-SFP+

SFP-10G-USR Optical transceiver, SFP+, 10G, multimode module (850 nm,



SFP-10G-LR, Huawei SFP+ Optical Transceiver, 10G,

Huawei SFP-10G-LR 10G SFP+ 1310nm 10km single-mode LC module for enterprise and carrier networks. Check real-time Huawei 10G SFP module price online.

Huawei LE0M0XSMDD SFP+ 10GBASE-LRM Multimode Transceiver

Der LE0M0XSMDD 10GBASE-LRM LC Duplex SFP+ kompatibel zu Huawei hat eine Empfangsfunktion (Receiver mit 1310nm) und eine Sendefunktion (Transmitter mit 1310nm) für die



Huawei Optical Modules and Cables

Buy Genuine Huawei Optical Modules and Cables from GenuineModules with best price and fast worldwide shipping.



Key Differences Between Singlemode and Multimode SFP Modules

Singlemode and multimode SFP modules are two primary categories of hot-swappable optical modules used in optical networks. Each module type uses LC interfaces, and professionals



Verified Supplier 10G Huawei SFP Factory Outlet Price , Alibaba

A1: The Huawei 10GBASE-LR SFP module is designed for long-reach fiber optic transmission and can support distances of up to 40 kilometers over single-mode fiber (SMF) using a wavelength of 1310 nm.

Everything You Need to Know About 1310nm Optical

A 1310nm optical module lets you move data efficiently through fiber optic communication networks. As part of the O-band (1260-1360 nm), it



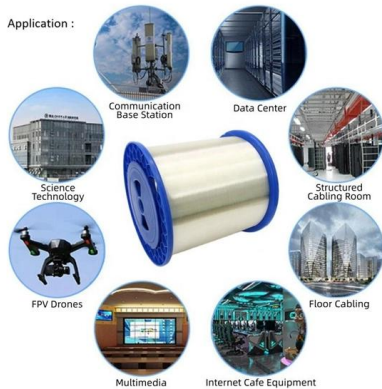
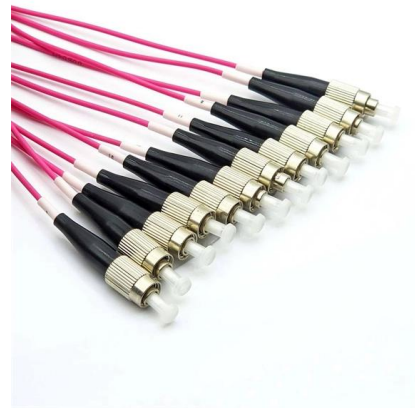
Huawei SFP-FE-SX-MM1310 SFP 100BASE-FX Multimode Transceiver

Diese Vorauswahl der weltweit besten Bauteile für optische Transceiver Module führt zu einer überdurchschnittlichen Lebensdauer aller SFP-FE-SX-MM1310 kompatiblen BlueOptics



Everything You Need to Know About 1310nm Optical

1310nm optical module offers reliable, cost-effective data transmission for metro, campus, and enterprise networks. Compare performance, reach, and

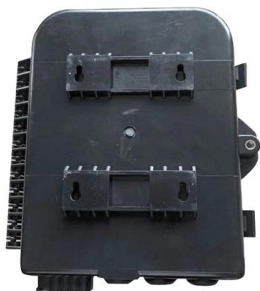


The Ultimate Guide to SFP Modules (2026): Types,

Confused by SFP vs SFP+? Read the definitive 2026 guide on SFP modules. We explain Single Mode vs Multimode, DDM diagnostics, and how to choose the right

Single-Mode Vs Multimode Optical Modules: Detailed Differences

Wavelength and transceiver technology
Multimode optical modules commonly operate at 850 nm (VCSEL-based) for short-range links; some multimode transceivers also use 1310 nm for medium



Huawei SFP-10G-LR Compatible 10Gb SFP

Huawei SFP-10G-LR Compatible 10G SFP+ Module - Single-mode 1310nm Wavelength for up to 10km with Standard Compatability This high-quality Huawei



Huawei OSX010000 SFP+ 10G Single Mode Optical

Huawei OSX010000 SFP+ 10G transceiver for single-mode fiber, 1310nm wavelength, 10km range. Compliant with 10Gbase-LR standard.



Cisco SFP vs GBIC vs XFP vs SFP+: A Practical

Wavelength: Defines the optical frequency (850 nm for short-range, 1310 nm for mid-range, 1550 nm for long-range). Connector Type: LC or SC,

What Is an SFP Port on a Gigabit Switch? Full Guide 2026

IT Hardwares Distributor , Cisco o Huawei o H3C etc. , Switches o Firewalls o Routers o Wireless o Fiber Optics & Cables Intro An SFP port on a



Optical Modules for Huawei S Series Switches

If an optical module is installed in a running switch, you can run the display transceiver command to view parameters of the optical module, including the center wavelength, transmission distance, fiber types



SFP-GE-LX-SM1310 (02315200)

This document provides specifications and details about the SFP-GE-LX-SM1310 optical module for Huawei devices.



SFP-10G-LR-1310nm 20km LC DDM Optical Transceiver

What Is SFP-10G-LR-1310nm 20km LC DDM Optical Transceiver Module? SFP-10G-LR-1310nm 20km LC DDM Optical Transceiver Module CISCO, HUAWEI,

SFP-10G-LR-1310nm 20km LC DDM Optical Transceiver

Multi-mode optical module is used to match multi-mode fiber. Multimode fiber has the defect of mode dispersion, its transmission performance is poorer than single



Contact Us

For datasheets, pricing, or custom high-speed optical interconnect solutions, please visit:
<https://www.syropy.com.pl>