

How to view the core switch configuration in cmd





How to view the core switch configuration in cmd



Basic Switch Configuration Guide with Examples

To view general information about the switch, such as model number, IOS file name, interface types, serial numbers, software version number, where

Configure basic switch and router configurations using

Configuring basic switch and router settings using Command Line Interface (CLI) commands involves accessing the devices' command-line



Using the Command-Line Interface

CLI Command Hierarchy CLI commands are organized hierarchically, with commands that perform similar functions grouped under the same level. For example, all commands that display information

Basic Commands to Configure Windows Server Core

In this article, I tried to describe the basic cmd and PowerShell commands that are useful for configuring and managing Windows Server Core



Chrome DevTools , Chrome for Developers

Advanced Network Analysis with Chrome DevTools Explore advanced Network panel techniques, including how to find performance



Guide to Basic Switch Configuration , Auvik

Switch configuration on your own can seem like a daunting task. Use this handy guide to get your network switch up and running with ease.



How to configure Cisco switch in 11 steps, ManageEngine Network

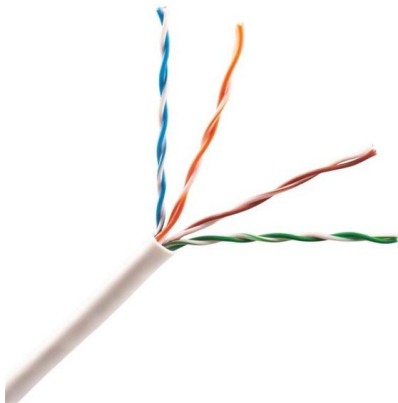
By configuring your Cisco switch, you can effectively manage its functionality, ensuring versatility, power, and optimal performance. Discover the essential CLI switch commands and the 11 configuration





Cisco Switch Configuration basic commands

Prerequisite - Switch Functions A switch is a layer 2 device used to forward packet from one device to another within the network. It forwards the packet through one of its ports on the basis



Basic Switch Configuration Guide with Examples

This tutorial explains basic switch configuration commands in detail with examples.

How do I show my global Git configuration?

I'd like to show all configured Git sections. I only found git config --get core.editor, and I'd like to output everything that's configured globally, not only the configured



P4 Visual Client (P4V) , Perforce Software

P4V--the P4 Visual Client is the graphical user interface for P4 which gives users direct access to their P4 server environments, making it easy to perform essential



35 Important Cisco Show Commands You Must Know (Cheat Sheet)

Following basic commands are used to configure a new switch : 1. Changing the hostname of a switch to GfgSwitch : It is used to set the name of the device. 2. To add a banner

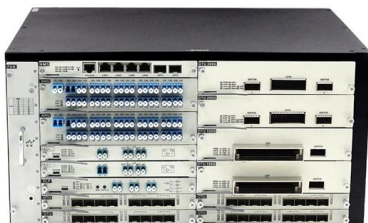
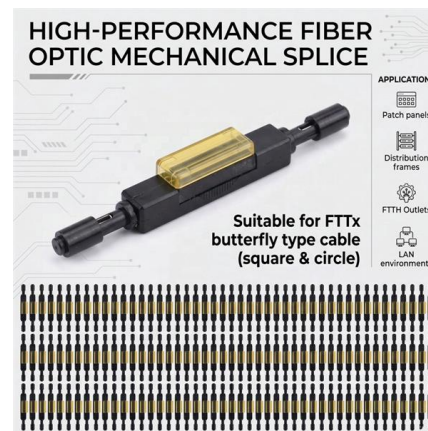


Enable or Disable Core Isolation Memory Integrity in Windows

This tutorial will show you how to turn on or off core isolation memory integrity in Windows 11. Core isolation is a security feature of Microsoft Windows

[directory-list-2.4.txt/directory-list-2.4.txt at main](#)

[Customer stories](#) [Events & webinars](#) [Ebooks & reports](#) [Business insights](#) [GitHub](#) [Skills](#)



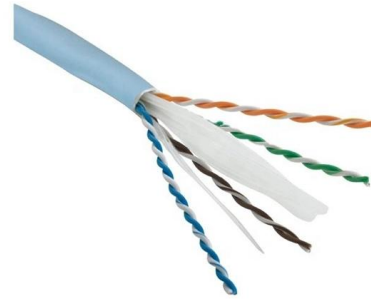
How to Configure a Cisco Switch in 10 Steps

Learn how to Configure a Cisco Switch. Follow along this Step-by-Step guide that will get you using Commands via PuTTY CLI



Get Cisco Switch Info (CLI Switching and Hard Coding Options)

This script has been designed to allow CMD switching or hard coding for normal running through PowerShell. This script has been designed to run show commands on switches.



Cisco CLI Switch Commands Cheat Sheet (PDF)

Download this Cisco Switch Commands Cheat Sheet as PDF file to have it as reference with you in the field. The most important CLI commands are included

5 Basic Cisco Switch Commands You Need to Know

Besides the above basic Cisco switch configuration commands, we're listing some of the most commonly used Cisco commands. Consider a cheat sheet for working



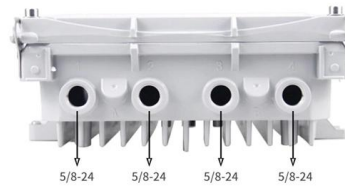
Complete Cisco Commands Cheat Sheet for Devices

After logging onto a Cisco device, you probably want to view its basic system settings. This is easily done by typing show running-config or simply show run.



What command gets all configuration info from a switch?

Hi guys. I'm making a backup of multiple Switches in my LAN. I'm doing it manually, like show run, then saving all information that I get on the screen to a text file. I remember from past that



Configuration in ASP Core , Microsoft Learn

App configuration in ASP Core is performed using one or more configuration providers. Configuration providers read configuration data from key

Useful Cisco Switch Verification Commands

These commands give you general details about your switch, like the software it is running, how long it has been powered on, and what hardware is installed. Operating system (IOS) version, uptime,



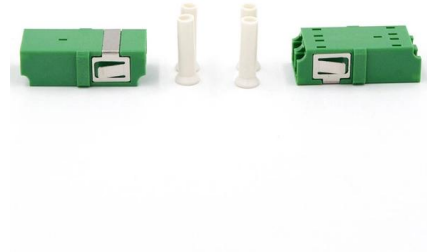
Cisco Catalyst 6500 Series Switches

Find software and support documentation to design, install and upgrade, configure, and troubleshoot Cisco Catalyst 6500 Series Switches.



Using the Command-Line Interface

You can log and view changes to the switch configuration. You can use the Configuration Change Logging and Notification feature to track changes on a per-session and per-user basis.



Documentation , NestJS

NestJS is a framework for building efficient, scalable Node.js server-side applications using TypeScript and combining OOP, FP, and FRP principles.

What command gets all configuration info from a switch?

The "show run all" variant (also described by others) also shows hidden configuration commands. Do note, what's hidden can change between IOS versions, further, defaults can also



Viewing port status and configuration (CLI)

Lists a subset of configuration data for all ports on the switch; that is, for each port, the display shows whether the port is enabled, the operating mode, and whether it is configured for flow control.



Contact Us

For datasheets, pricing, or custom high-speed optical interconnect solutions, please visit:

<https://www.syropy.com.pl>