

How to use the cable tray inverted clip





How to use the cable tray inverted clip



Bending Cable Tray

Students trading aid on how best to put an internal 90 degrees bend in steel cable tray. Includes a full demonstration on how bend steel cable tray using a crimping to. You can buy a manufactured

Cable Tray to Rod Clips , Cable Tray Spring Clips

Rod Clips for fixing small cable containment to threaded rod. Gives a 68mm arm for supporting cable tray, basket or trunking.



Master the Cable Tray Secret to Perfect Back of Bend

How to Master back of bend measurements on electrical Cable Tray. Make a 90 electrical cable tray bend to measurement with a gusset of your choice using one piece of tray.

Why Use an Inverted Cable Tray for Efficiency

Avoid common installation errors with inverted cable trays and achieve a safer, more organized cable management system in any setup.



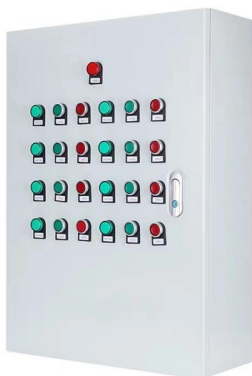
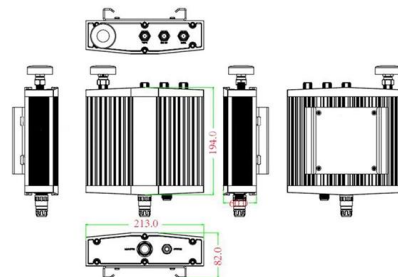
CMU School of Computer Science

å 10 ä ,EURå fä ? 10 ä ,EURç(TM)¾ 100
ä ,EURç(TM)¾å s 100 ä ,EURå f 1000 ä ,EURå
få s 1000 ä ,EURå--<ä ,EUR 101
ä ,EURç(TM)¾é>¶ä

Putting a 90 degree bend into Cable Tray

In this clip, David from EzyStrut has a length of EzyTray. He is going to show you how to use EzyStrut's ET/ET3/ET5 Radius plate to create a 90 degree bend in a piece of these cable trays

Mechanical drawing



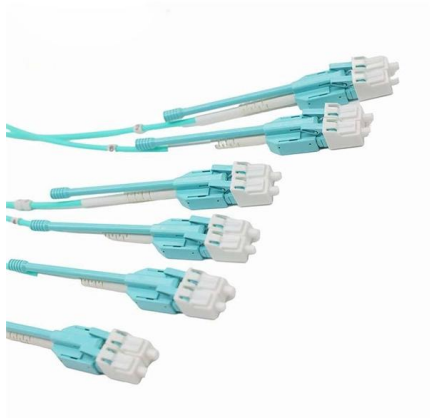
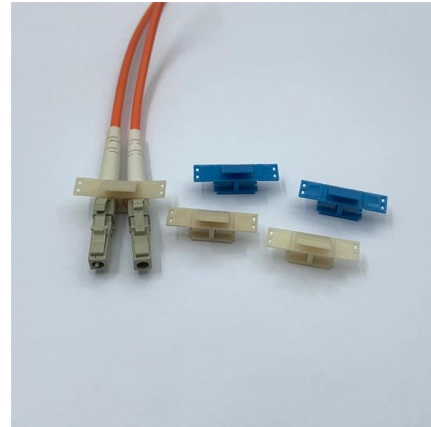
Best Practice Guide to Cable Ladder and Cable Tray Systems

This publication is intended as a practical guide for the proper and safe* installation of cable ladder systems, cable tray systems, channel support systems and associated supports.



Revit Recess: Vertical Cable Tray Orientation

Rotating the cable tray elbow will allow you to then specify the orientation. Using the cable tray connectors at both the starting and ending points of the elbow, you will



Rotating horizontal cable tray to be ran vertically. : r/Revit

You can sort of do it by drawing a vertical piece of tray (eg by making a vertical offset) and then rotating that in a section. Only issue is that Revit does get confused about height vs width when you do that

A Guide to Cable Tray Accessories and Their Functions

Explore a detailed guide to cable tray accessories and understand their uses in ensuring safety, stability, and efficiency in electrical system



Rotate or Place Inverted Cable Tray

As you can see from the image illustrated below ? I have a set of cable tray run in my model which I need to change their rotation by 180 degrees. Also, is it possible to place a new cable



nVent CADDY Wire Basket Tray Clip

Watch how to quickly fix wire basket cable trays to strut channels without any tools using the nVent CADDY Wire Basket Tray Clip-- a time-saving solution designed to help contractors



CABLE TRAYS GENERAL INFORMATION AND INSTALLATION

In order to install the cable tray supports, first find the required elevation from the floor to the bottom of the cable tray and establish a level line with a laser or a nylon string.

Cable Trays Installed Vertical In A Different Manner , Eng-Tips

But since the cable ties are not needed to maintain cable position, they don't tend to get over tightened by gorilla installers. If you just turn a horizontal tray on its side, the ties are all that



Cable Tray Systems

Durable and reliable cable tray systems providing premium performance in commercial and industrial applications, available in a variety of materials to suit your needs.



- 100KWH/215KWH
- LIQUID/AIR COOLING
- IP54/IP55
- BATTERY 6000 CYCLES



Cable Tray Technical Guide A practical guide to product selection and

In designing supports for a cable tray system, consideration should be given to the loads associated with future cable additions and any additional loading that may be applied to the cable tray system (e.g.,



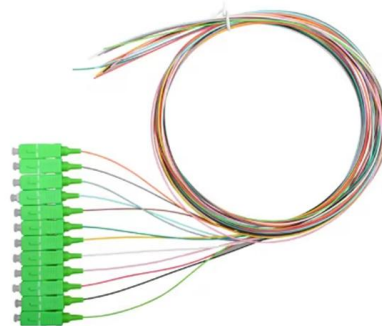
How to Make an Internal Bend in Steel Cable Tray Using a

Students trading aid on how best to put an internal 90 degrees bend in steel cable tray. Includes a full demonstration on how bend steel cable tray using a bending machine and how to use a



LINIAN Cable Tray Clip

Check out this installation of our new LINIAN product - Cable Tray Clip. The LINIAN Cable Tray Clip can be used with any brand of cable trays and does not require use of tensioning tools or steel



INSTALLATION GUIDE

Cable or "P" clamps and plastic tie wraps are used to fasten cables/conductors to the ladder tray. Single conductors must be fastened to prevent excessive movement generated by fault current magnetic



Building Product: Cable Tray Systems , ARCAT

Griplock's inverted "Y" cables and tool-free adjustable Grippers are perfect for suspending most Cable Tray Systems. Whether you're looping over unistrut or attaching to 1/4-20 or 3/8-16 deck studs, our



Rotate or Place Inverted Cable Tray

Not sure why you'd want upside down cable tray, but you can place one then mirror it in section: Unfortunately for this situation, when you copy another one or use trim command the cable tray



Complete cable tray manual for electrical engineers and

How to design cable tray? Most projects are roughly defined at the start of cable tray design. For projects that are not 100 percent defined before design start, the cost



Rotate or Place Inverted Cable Tray

Not sure why you'd want upside down cable tray, but you can place one then mirror it in section: Unfortunately for this situation, when you copy another one or use trim command the cable





Contact Us

For datasheets, pricing, or custom high-speed optical interconnect solutions, please visit:

<https://www.syropy.com.pl>