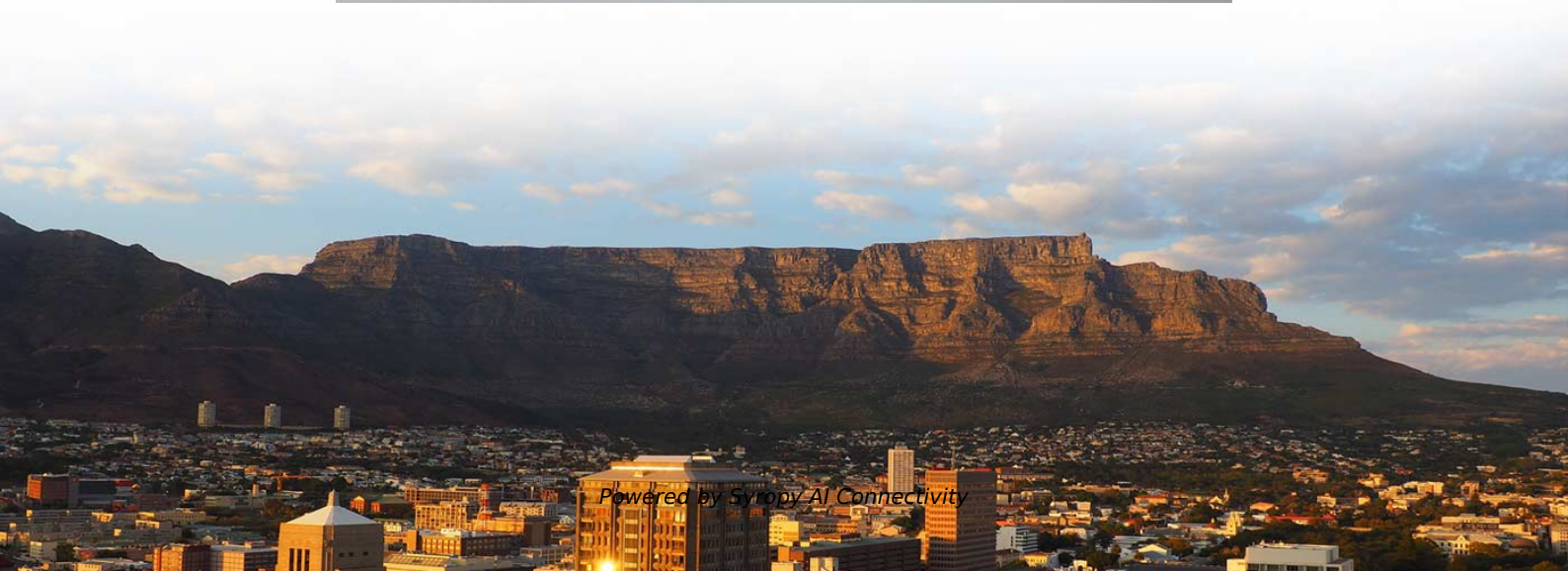


# **How to understand the switches in a distribution box**





## How to understand the switches in a distribution box

---

### Distribution Boxes Explained: Types, Functions, and



Learn about distribution boxes, their types, functions, and safety features to ensure efficient and secure electrical power distribution in any building.

### Understanding Distribution Boxes:A Comprehensive Guide

Understanding its significance, this article covers what a distribution box is, how it functions, its structure, the various types available, and how it differs from other electrical boxes like



### The Complete Guide to Distribution Box: Installation, Types & More

The main switch, or main breaker, controls the entire electrical supply to the distribution box. This large switch allows you to disconnect all power to the building during emergencies or



### Understanding Distribution Boxes:A Comprehensive Guide

Understanding its significance, this article covers what a distribution box is, how it functions, its structure, the various types available, and how it



### **Guide to Understanding Your Home's Electrical**

Understand the importance of switchboards in your home, including three key components, and why regular maintenance checks are essential. Learn



### **Distribution Box Guide: Types, Components & Solutions**

Understand distribution boxes (DB boxes) in 5 minutes. Learn about types, components, functions, and uses. Find the perfect DB box for your needs.



### **What is the Internal Structure of The Distribution Box**

In this guide, we've explored the essential components and functions of a distribution box, including how it distributes electricity, provides safety through circuit breakers and fuses, and





## How To Read The Distribution Box System Diagram

?Check electrical parameters?: First understand the basic electrical parameters of Distribution box so that you can have a general understanding of



## What is the Internal Structure of The Distribution Box

Learn about the internal structure of a distribution box, its components, functions, and key types. Understand its role in electrical systems

## What is the Function of a Distribution Box in Electrical Systems

Understand the function of the distribution box in electrical systems and how it ensures safe and efficient power distribution.



## Basic knowledge of distribution cabinet and distribution box

Composition: three groups of three coil current transformers, disconnectors, circuit breakers, knife switches and live display devices Function: it is mainly used to

## How Does a Power Distribution Box Work



Learn how a power distribution box works step by step--from incoming power to circuit protection and smart monitoring--for safe, efficient electricity delivery.



### The Ultimate Guide to Distribution Box Types

Discover the key types of distribution boxes with NUOMAK's comprehensive guide. Learn about Main Distribution Boards (MDB), Consumer Units, Transfer

### What is the difference between a distribution box and a switch box

The proper use of distribution and switchgear cabinets The difference between a distribution box and a switchboard revolves around their respective functions and applications. A



### Explore Power Distribution Box Types and Functions

Power distribution boxes are used in commercial and residential buildings and are part of the electrical system, also known as switchboards.



## The purpose, working principle, and usage instructions

During normal operation, the circuit can be connected or disconnected using manual or automatic switches. When there is a malfunction or

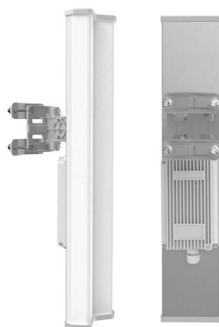


## Understanding The DP Box And DP Switch: Electrical Power Distribution's

Let's look at some of its advantages: Effective Power Distribution: The DP Box ensures that power is distributed evenly among customers by segmenting the electrical supply into several

## About the Internal Structure and Basic Components of the Distribution

The electric distribution box is a low-voltage power distribution device that assembles switchgear, measuring instruments, protective appliances and auxiliary equipment in a closed or semi-closed



## How to Read and Interpret Your Distribution Box Labels

You might feel a little nervous about opening your distribution box, but you can do it safely if you follow some simple steps. Let's walk through what you need to know before you start.



## Overview of basic knowledge of distribution box and

During normal operation, the circuit can be connected or disconnected with the help of manual or automatic switch. In case of fault or abnormal operation, cut off the



## Understanding Distribution Boxes: Your Guide to Power

Weatherproof Distribution Boxes These serve specific outdoor purposes, with rain, dust, and extreme temperatures sealed shut, protecting any

## What is the difference between a distribution box and a switch box

In this article, we will explain what a distribution box and a switchgear box are, when to use which one, what their uses are and what safety regulations apply.



## Distribution Box: Types and Functions , Axis-Electricals

A distribution box ensures that electrical supply is distributed in the building, also known as a distribution board, panel board, breaker panel, or electric panel.



## The Complete Guide to Distribution Box: Installation, Types & More

Understanding the key components of a distribution box helps you make informed decisions about installation and maintenance. Each element plays a specific role in ensuring safe



## Contact Us

---

For datasheets, pricing, or custom high-speed optical interconnect solutions, please visit:  
<https://www.syropy.com.pl>