

# How to turn on off the switch in the distribution box





## Overview

---

This switch is usually located near the top of the box and has two positions - off and on. To turn on a main breaker box, you will first need to locate the main breaker switch. This is normally very easily fixed - simply go to your switchboard box, open it and identify which switch has gone off, and then switch it back on. Connect the power source directly to the input terminal of the controlling device. A distribution board (also known as panelboard, circuit breaker panel, breaker panel, circuit breaker, electric panel, fuse box or DB box) is a component of an electricity supply system that divides an electrical power feed into subsidiary circuits while providing a protective fuse or circuit.



## How to turn on off the switch in the distribution box

---



### Your Fuse Box Explained

By looking at your fuse box you would be able to see if a circuit breaker has 'tripped' as one or more of the switches would be flicked down. You

**unsupervised\_topic\_modeling/topics/en/17/100/100/topics at**

Contribute to [annontopicmodel/unsupervised\\_topic\\_modeling](#) development by creating an account on GitHub.



### Hardware Archives , TechRepublic

Stay current with the components, peripherals and physical parts that constitute your IT department.

### Your Electrical Distribution Board

Understand the importance of switchboards in your home, including three key components, and why regular maintenance checks are essential. Learn



### **Electrical Isolation in Distribution Board Safework**

Place a padlock through the switch where possible, to lock it in the off position. Take the key away with you. Place a sign on the switch and the DB saying "Electrician"



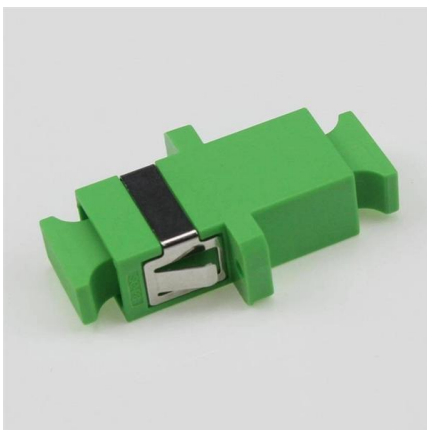
### **A Step-by-Step Guide to Wiring an Electrical Panel Box**

Find out how to properly wire an electrical panel box with a comprehensive diagram and step-by-step instructions.



### **How Does a Power Distribution Box Work**

Learn how a power distribution box works step by step--from incoming power to circuit protection and smart monitoring--for safe, efficient electricity delivery.





## A Guide to the Switches on Your Breaker Panel

Breakers are designed to control the flow of electricity in the home, but with so many switches, it can be intimidating for new DIYers. Use this guide to

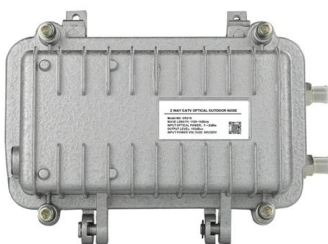


### Wiring diagram for a switch box: Clear and concise guide

Use a voltage tester to check for power at the switch box and at each fixture. Flip the switch to ensure it turns the power on and off as intended. Following a

## Understanding Distribution Boxes: Your Guide to Power

Weatherproof Distribution Boxes These serve specific outdoor purposes, with rain, dust, and extreme temperatures sealed shut, protecting any



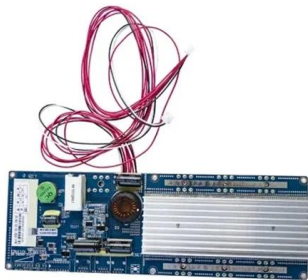
### Create a branch named ``dev/`` for this work. If files are

Example: Engineers, PMs, designers, and operators at Cloudwalk use Codex daily to turn specs into working code whether they need a script, a new fraud rule, or a full microservice delivered in



## Distribution Box Wiring Steps

?Wiring and Binding? ?Wiring Direction?: Wiring between the main circuit breaker and each branch circuit breaker in the box generally goes on the left, and



## How To Turn On Main Breaker Box

We'll explain what the main breaker box is, what tools and safety measures you should take into account, and how to actually turn on the breaker itself. By the end, you'll have a much better

## How to Turn Off the Power to Your House

Learn how to turn off the power to branch circuits or to the entire home at the main circuit breaker panel or fuse box.



## Distribution board

In Canadian service entrance panelboards the main switch or circuit breaker is located in a service box, a section of the enclosure separated from the rest of the panelboard, so that when the main switch or



## Basic On Off Switch Wiring Diagram Explained

Clear on/off switch diagram with labels and wiring connections. Learn how the components are arranged and how the circuit functions in practical setups.

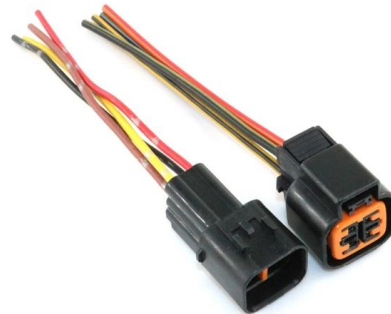


## On Off On Switch Wiring Diagram Explained

Detailed wiring diagram for an on/off switch, including connection methods and technical specifications for safe and accurate installation.

## Extra Ent Network , this has got to STOP ??

this has got to STOP ? ?? conversation about showing citizenship id and deportation



## passman/js/vendor/zxcvbn/zxcvbn.js.map at master · nextcloud

? Open source password manager with Nextcloud integration - nextcloud/passman



## What is the Function of a Distribution Box in Electrical Systems

Understand the function of the distribution box in electrical systems and how it ensures safe and efficient power distribution.



## How to Wire a Home Distribution Box

FDB (Final Distribution Board) directly connected through SDB (Sub Distribution Board) and the final switches are used to control the connected

## Explore Power Distribution Box Types and Functions

Power distribution boxes are used in commercial and residential buildings and are part of the electrical system, also known as switchboards.



## How to use your switchboard/switch box , BUILD

This is normally very easily fixed - simply go to your switchboard box, open it and identify which switch has gone off, and then switch it back on.





## Distribution Box Installation: A Complete Guide to Safe

The distribution box, often referred to as a breaker box, fuse box, or electrical panel, is a critical component of any electrical system. It acts as the central hub for

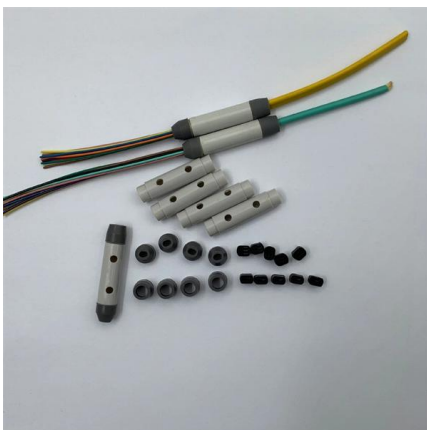


## Power Distribution Boxes Explained Simply

Learn what a power distribution box is, how it works, key components, types, and why it's vital for safe and efficient electrical systems.

## Understanding Your House's Electrical Panel: A Visual

When it comes to the electrical panel, also known as a breaker box or distribution board, there are several different types to choose from depending on the needs



## Power Distribution Boxes Explained Simply

Discover the essentials of a Power Distribution Box--how it works, key types, benefits, and tips to ensure safe, efficient electrical power management.



## What is an Electrical Distribution Box? A

Main Switch: This is the "master control" for the entire distribution box, allowing the entire system to be turned off or on. In an emergency, flipping this



## Circuit Breaker Distribution Panel

Premium Electric electricians on how your circuit breaker distribution panel works, an easy-to follow guide for beginners.

## Contact Us

---

For datasheets, pricing, or custom high-speed optical interconnect solutions, please visit:  
<https://www.syropy.com.pl>