

How to switch on off the distribution box



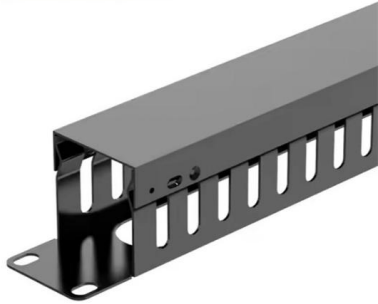


Overview

A distribution board, also known as a DB box, is like the central hub of an electrical system. It contains multiple circuit breakers and connects various electrical circuits to ensure the safe flow of electricity throughout the building. In modern electrical systems, cable distribution boxes (also known as electrical distribution boxes or distribution boxes) play a crucial role as the key hub for managing, distributing, and protecting circuits. Whether you're powering up a residential home, a commercial office, or an industrial plant.



How to switch on off the distribution box



Single Phase DB Box Wiring: Your Ultimate Guide!

Welcome to our comprehensive guide dedicated to single-phase distribution board (Db) box wiring. Within residential and light commercial environments, single-phase power distribution is

Distribution Box Wiring Steps

?Preparation phase? ?Box installation?: Make sure that Distribution box has been correctly installed and fixed. ?Material preparation?: Prepare the required cir



Distribution board

In Canadian service entrance panelboards the main switch or circuit breaker is located in a service box, a section of the enclosure separated from the rest of the panelboard, so that when the main switch or

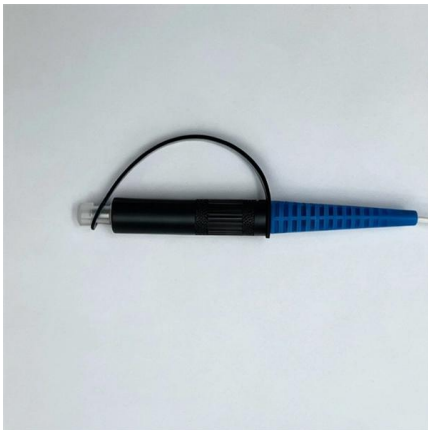
On Off On Switch Wiring Diagram Explained

Detailed wiring diagram for an on/off switch, including connection methods and technical specifications for safe and accurate installation.



on video **How to Wire a Home Distribution Box**

How to Wire a Home Distribution Box - Step-by-Step , Distribution DB box wiring diagram
Welcome to our channel! In this video, we'll walk you through the



Understanding Distribution Boxes: A Comprehensive Guide

A distribution box, also known as a power distribution box or electrical distribution box, is used to distribute electrical power safely to multiple



What is an Electrical Distribution Box? A

Discover everything you need to know about electrical distribution box! Learn about types, components, and how to choose.





A Step-by-Step Guide to Wiring an Electrical Panel Box

A Step-by-Step Guide to Wiring an Electrical Panel Box An electrical panel box, also known as a breaker box or a distribution board, is a crucial component of any



The Ultimate Guide to Distribution Box Types

Discover the key types of distribution boxes with NUOMAK's comprehensive guide. Learn about Main Distribution Boards (MDB), Consumer Units, Transfer

How Does a Power Distribution Box Work

Learn how a power distribution box works step by step--from incoming power to circuit protection and smart monitoring--for safe, efficient electricity delivery.



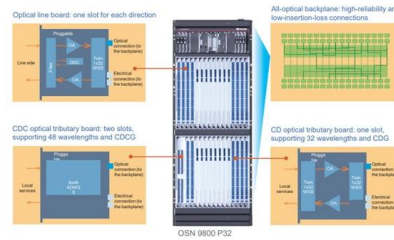
Distribution Boxes Explained: Types, Functions, and

Learn about distribution boxes, their types, functions, and safety features to ensure efficient and secure electrical power distribution in any building.



How to Wire a Home Distribution Box

How to Wire a Home Distribution Box - Step-by-Step , Distribution DB box wiring diagram
Welcome to our channel! In this video, we'll walk you through the



How to Install a Distribution Box--A Comprehensive

First of all, you need to have a simple understanding of the definition of a distribution box, and make it clear which kind of distribution box you want to

Where Is the Distribution Box Located and How to Find It

When your power goes out or a circuit breaker trips, knowing exactly where your distribution box is located can save you time, money, and frustration.



Size determination, installation method and wiring mode

When the switches are arranged in two rows, the wiring route of the switches shall be considered. Of course, there is no final conclusion on the size of the electric box.





Understanding Distribution Boxes:A Comprehensive Guide

A distribution boxes is an essential device that manages the safe and efficient flow of electrical power throughout different areas of a building or facility.



Understanding Distribution Boxes: Your Guide to Power

Weatherproof Distribution Boxes These serve specific outdoor purposes, with rain, dust, and extreme temperatures sealed shut, protecting any

Step-by-Step Guide to Wiring a 3 Phase DB Box

Learn about the wiring process for a 3 phase distribution board (DB) box, including the necessary steps and safety precautions. Understand how to connect the incoming power supply, distribute it to



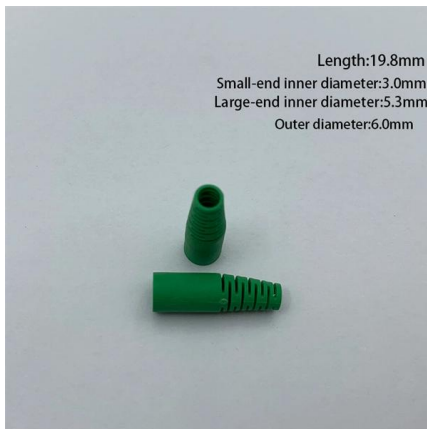
Understanding Electrical DB Boxes: Your Ultimate Guide to Safety

Join us as we peel back the layers on DB boxes, empowering you with the knowledge to take control of your electrical safety and functionality with confidence. From installation tips to best practices, this



How to Install a Distribution Box--A Comprehensive

What is a Distribution Box? First of all, you need to have a simple understanding of the definition of a distribution box, and make it clear which kind



How to Install a Cable Distribution Box Safely and

Reliable cable distribution boxes ensure safe, efficient power management for residential, commercial, and industrial systems. Learn



What is a DB Box? Types, Wiring, Selection Guide

Learn everything about DB box (distribution box): what they are, how they work, wiring diagrams, types, and how to choose the right one.



How to Install a Cable Distribution Box Safely and

In modern electrical systems, cable distribution boxes (also known as electrical distribution boxes or distribution boxes) play a crucial role as the key



Electrical Isolation in Distribution Board Safework

The distribution chamber is always isolated from the main supply point prior to any works taking place. The supply point is locked off / signed as isolated whilst work



What is the Function of a Distribution Box in Electrical Systems

The distribution box plays a crucial function in the distribution box of electrical systems. It helps electricity move safely to different circuits, ensuring that power is utilized efficiently. This box protects

Distribution Box Guide: Types, Components & Solutions

Understand distribution boxes (DB boxes) in 5 minutes. Learn about types, components, functions, and uses. Find the perfect DB box for your needs.



The Complete Guide to Distribution Box: Installation, Types & More

The main switch, or main breaker, controls the entire electrical supply to the distribution box. This large switch allows you to disconnect all power to the building during emergencies or



The Importance of Distribution Boxes in Electrical Systems

Learn more about how distribution boxes play a critical role in the safe and efficient operation of electrical systems.



Contact Us

For datasheets, pricing, or custom high-speed optical interconnect solutions, please visit:
<https://www.syropy.com.pl>