

How to shut down a high-voltage distribution box in case of a power outage





How to shut down a high-voltage distribution box in case of a power outage

5-INCH COLOR TOUCHSCREEN

Intuitive operation, easily accessible with just one touch

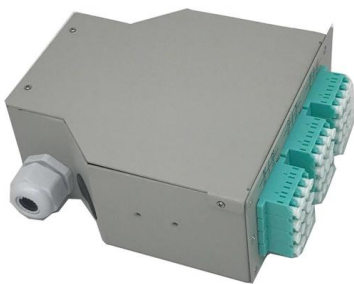


What to Do to Protect Yourself During a Power Outage

Protect your health during a power outage
Protect your health and safety during a power outage. During a power outage, you may face a number of

Electricity transmission emergencies and safety advice

The transmission network is like the motorways, carrying vehicles (electricity) at high speed (high voltage) across the country. This is the network of big pylons and



What to Do to Protect Yourself During a Power Outage

Protect yourself from other hazards
Protect yourself and others from electrical hazards. Take steps to protect yourself and others from electrical

Building a power outage business continuity plan: Step by step

Business continuity is an organization's ability to maintain critical business functions during and after a disruption. Power outages can strike at any moment, leading to extended



High Voltage Switching Operations: A Guide to Safety

High-voltage switching operations are a fundamental part of any manufacturing operation, but they come with inherent risks. To prevent accidents



How to Survive If the Power Grid Goes Down: Survival

Having the key skillset to know how to survive if the power grid goes down could save your life. Click here to learn how to prepare for power grid failure.



Stay Safe During Power Outages

Stay Safe During Power Outages Severe storms are devastating to homes, properties, and lives. These storms can also take down power lines--creating a dangerous situation for all of us, including the line



7-Step Power Outage Emergency Response Plan

Avoid devastating outages and maintain business continuity with a power outage emergency response plan that adapts with your business.



Emergency Response Guide LF Electric

- Only work on an electric vehicle when the High-Voltage system is shut down. See procedure 'Shutting down High-Voltage system'. -Avoid contact with the High-Voltage components and the orange cables

Power Distribution Boxes Explained Simply

Learn what a power distribution box is, how it works, key components, types, and why it's vital for safe and efficient electrical systems.



How Do I Shut Down My Generator When It's

How Do I Shut Down My Generator When It's Powering My House (During an Outage)? During utility outages, follow the specified steps to turn the



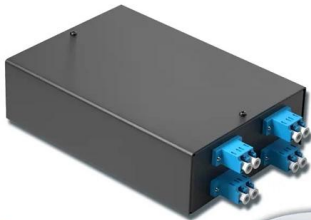
Design of Intelligent Fault Isolation Device to Prevent Wide-Area Power

When a fault in secondary feeder is occurred in MVDC distribution system, the operation method of protection devices is being required to achieve better protection coordination in order to



4-port 8-core LC wall-mounted fiber terminal box (empty frame)

Surface painted Scientific plate fiber Cold-rolled steel plate



Lifetime quality assurance

Free shipping

Customizable for telecommunication

High Voltage Switching Operations: A Guide to Safety

In case of an emergency, manufacturers need clear and effective shutdown procedures. These are designed to immediately disconnect the power

How To Safely Reset a Tripped Breaker

Your main breaker controls the power supply to all areas of your house, so when tripped or shut off, it will shut down power to all of the branches



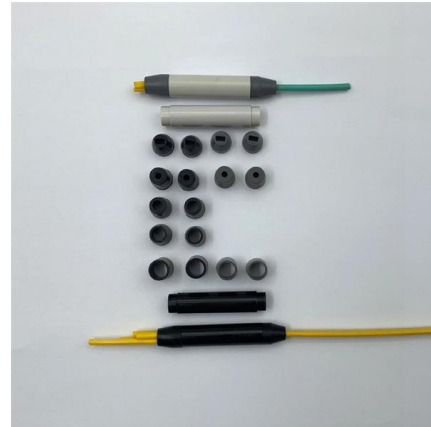
How to Master High-Voltage Switchgear: Operations

Master high-voltage switchgear operations, from safe power-on/off to crucial fault diagnosis and handling. Get expert tips to boost reliability & safety.



Substation Emergency Response: Effective Plans

In this comprehensive guide, we discuss the significance of substation emergency response planning, detail best practices for developing effective strategies, and explore how data analytics and business



How to Protect Your HVAC System During a Power Outage

Shut It Down During the Outage If you lose power, one of the first things you should do is turn off your HVAC system at the thermostat. This simple

Emergency Power Distribution Equipment

When power is lost, legally required standby systems are required to provide alternate power within 60 seconds or less.



SSEN Word Document Template (Internal)

Where the terminals of High Voltage Apparatus to be worked on are connected via exposed Conductors then each Conductor connected to the Apparatus, irrespective of whether it is to be worked on or not,



EMERGENCY POWER-OFF CIRCUITS

EMERGENCY POWER-OFF CIRCUITS The Emergency Power Off (EPO) button is a common feature in many medical, industrial, and data processing facilities. EPO circuits provide a



Preparing for an Electrical Power Outage

Typically, a UPS will provide power for only a short period of time (15 to 60 minutes) to allow for backing up of system and data files before shutting down. Preparing for an outage now and practicing

How to Respond to a Power Outage , Lowe's

In order to properly react to an electrical outage, it's helpful to understand which devices in your home distribute power. Electrical power distribution is a system of electricity transmission and



Be Prepared: Why Emergency Shutdown Procedures

Effective emergency shutdown procedures must be comprehensive and easy to execute under stress. Key components of a good shutdown



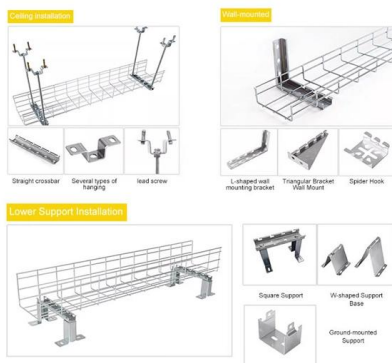


The Ultimate Guide to HV Disconnect Switches:

This comprehensive guide delves deep into the world of high-voltage disconnect switches, exploring their critical function, various types, selection



INSTALLATION METHOD



How to Shut the Power Off Before the Breaker Box in 4

You might run into an accident because there remains a connection with the primary power source. So, to add confidence to your maintenance or

How do we shut off power in an electrical emergency?

For example, you may have noticed some specific issues that may be causing the power outage, such as water dripping from a light fixture, in which case you will



high current

In a scenario of sudden power loss, my latching valve will be still open by default. That valve operates with 5V, and needs 0.5A current with duration of 0.1s to be shut off.





Electric power distribution

A 50 kVA pole-mounted distribution transformer
Electric power distribution is the final stage in the delivery of electricity. Electricity is carried from the transmission



Power Outage Safety , American Red Cross

A power outage occurs when the electrical power goes out. Planned or unexpected, it can last for days or longer, disrupting communications, water, transportation,

Contact Us

For datasheets, pricing, or custom high-speed optical interconnect solutions, please visit:
<https://www.syropy.com.pl>