

How to set up fiber optic cable tray elbows





How to set up fiber optic cable tray elbows



Installing fiber-optic cable in premises applications

There are many aspects of optical-fiber cable installation that could be examined, but two of the most important from a practical standpoint are general guidelines for

A Step-by-Step Guide to Fiber Optic Cable Installation

This beginner-friendly guide will walk you through the step-by-step process of fiber optic cable installation for each method,



Fiber Optic Cable Tray

Watch an installation of fiber cable tray, and know clearly how to put those parts together.

5"

Create a 45° or 90° downward angle in fiber cable trays with this elbow. Tool-free installation, flame-retardant PVC construction, and snap-on cover included.



Cable Trays and Optical Cables

The purpose of this AE Note is to outline the use of fiber optic cables in "tray rated" environments. The question arises as to what listing is required for an optical fiber cable installed in a



How to Install Fiber Optic Raceway on Open Basket Cable Trays

This guide is based on field experience installing fiber optic raceway systems with manufacturer specifications and local requirements for your specific project.



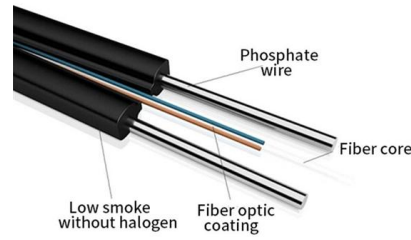
HES Series Installation Guide

There are 5 undrilled U-shaped Fiber Cable Input Holes reserved for flexible fiber installation. To use these holes for fiber installation, first use a mini hand drill to drill U-shaped holes as pre-outlined in



45° Down Elbow

45° Down Elbow Connects to a straight channel section to create a 45-degree downward angle from a horizontal run. Use with appropriate 45 degree up elbow

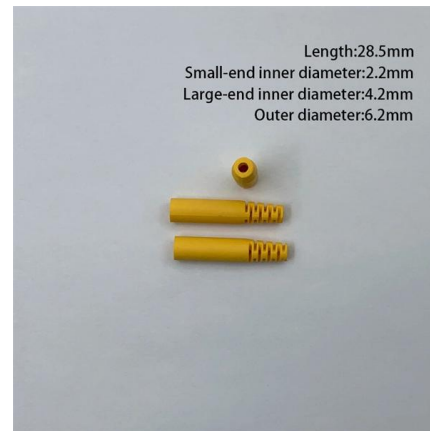


Angler Fiber Optic Cable Trays

The Angler Fiber Cable Tray system is designed to protect and route fiber optic patch cords, multi-fiber cable assemblies, and intrafacility fiber cable (IFC) to and from fiber splice enclosures, fiber

Horizontal 90 degree Elbow

Horizontal 90° Elbow Straight channel sections support and carry cables horizontally throughout a fiber cable routing system. Available in 6.5ft lengths, channels can



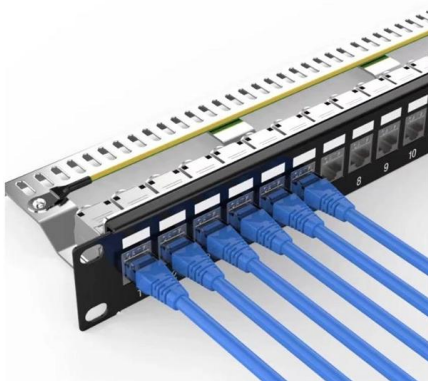
How to Connect Fiber Optic Cable: Comprehensive Guide

Master how to connect fiber optic cable with our detailed guide. Step-by-step instructions to ensure you achieve the best performance and reliability in



Buy In Bulk Bend Cable Tray Elbow Design & Stainless Steel

Approximately starting at \$0.8, buy bend cable tray in bulk with a minimum order of 10 units. Stainless steel wire mesh trunking, 90-degree elbow, and cable management tray available for wholesale.

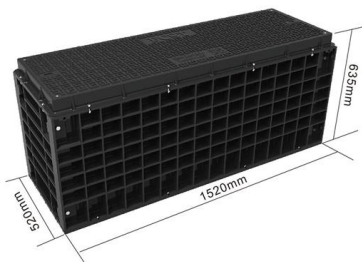


Toolless Horizontal 90-Degree Elbow for Fiber Routing System, 240

MODEL NUMBER: SRFC10ELBOW 240 mm elbow section turns a straight horizontal run in your fiber management system into a 90-degree turn.

Fiber Tray Installation after pulling Network Cabling , Example

Simple training video for our teams after pulling the fiber to locations, either the MDF or IDF spots. To secure the fiber and get it ready to splice for the pigtails.



Learn How to Master Fiber-Optic Cabling Installations

Our guide to fiber optic cabling installation will help you boost your SEO and the quality of the projects. Master important standards, bend radius and



The FOA Reference For Fiber Optics- Installing Fiber

General Guidelines For Installing Fiber Optic Cable
Fiber optic cable may be installed indoors or outdoors using several different installation processes.



FiberGuide® Fiber Raceways , CommScope

Explore CommScope Fiberguide for efficient fiber duct and cable management raceways. Enhance your network organization with our solutions for many industries

Cable Tray Technical Guide A practical guide to product selection and

A practical guide to product selection and installation This guide for engineers and installers has been developed by ABB as a practical reference regarding cable tray characteristics, installation, and



5"

5" - 15" Horizontal 90° Elbow - Fiber Cable Tray
Channel Straight channel sections support and carry cables horizontally throughout a fiber cable routing system.

Fiber Optic Cable Tray and Vertical Riser



Guidelines

Industrial Cables Fiber Fiber Connectivity
Enterprise Fiber Optic Enclosures And Adapter
Plates Enterprise Connectors Enterprise Pre-
Terminated Enclosures Harsh Environment
Enclosures



Fiber Cable Tray

Our Fiber Cable Tray System is a comprehensive raceway solution for data center, enterprise, central office, and mobile switching center applications. Designed to

Fiber Cable Trays

Our Fiber Cable Tray System designed to route and protect fiber optic and high-performance copper cabling to or from network cabinets, distribution frames or other devices. It includes channels,



How To Set Up Overhead Fiber Optic Cable? -- ZMS Cable

Fiber optic cable construction is roughly divided into the following steps: preparation -> routing project -> fiber optic cable laying -> fiber optic cable splicing -> project acceptance.



GENERAL INFORMATION

Cable trays or raceways often provide a convenient, safe and efficient method of fiber optic cable installation. Trays can be installed in ceilings, below floors and in riser shafts. When installing fiber



5"

Create a 45° or 90° upward angle in fiber cable trays with this elbow. Has Tool-free installation, flame-retardant PVC construction, and snap-on cover included.

Fiber Cable Tray System

GENERAL PROCEDURE Following is a general guideline for installing a fiber tray system:



Fiber Optic Cable Tray and Vertical Riser Guidelines

Fiber Optic Cable Tray and Vertical Riser Guidelines - Optical Cable Corporation. Products. Fiber. Copper. Hybrid. Cabinets, Racks, Enclosures. Deployable Solutions. Industries. Oil & Gas. Mining.



Universal Splice Tray Installation Instructions

It is recommended to place the first tray in the lowest position and build out when adding new trays and facing up when open for splicing. Position one of the hinge tabs into the desired position hole. Align



Cable Tray Technical Guide A practical guide to product selection and

In designing supports for a cable tray system, consideration should be given to the loads associated with future cable additions and any additional loading that may be applied to the cable tray system (e.g.,

How to Properly Install Fiber Optic Cable: A Step-by

After installation, thoroughly test the fiber optic connection to ensure that it is operational. This will assist you in identifying any issues early on and



Contact Us

For datasheets, pricing, or custom high-speed optical interconnect solutions, please visit:
<https://www.syropy.com.pl>