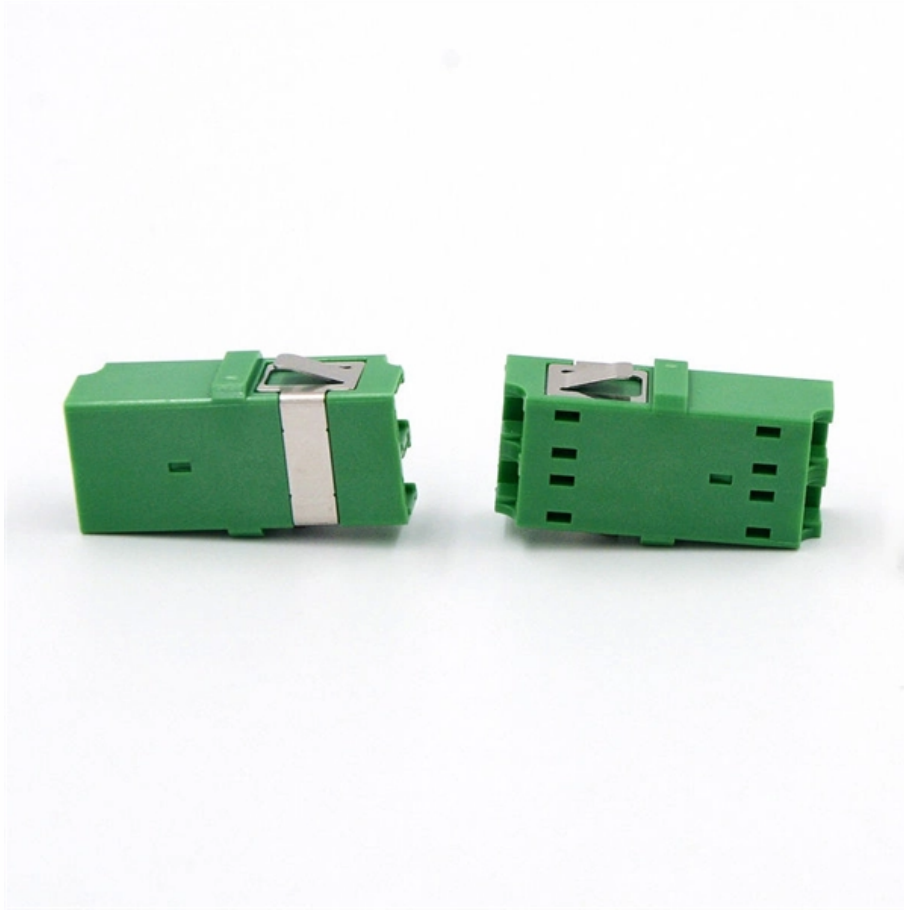


How to set a fiber optic sensor to normally closed





How to set a fiber optic sensor to normally closed



How to Setup Fiber Optic Sensor?

Step 2: Setup For example, we set when the light intensity becomes 55 the fiber optic sensor will send trigger signal. First, put the detected object in the farthest

Keyence Digital Fiber Optic Sensor (FS-N11CN) Setup

Introduction This guideline explains how to setup and mount the Keyence Digital Fiber Optic Sensor (FS-N11CN). Tool List No tools are necessary to setup the Keyence Digital Fiber Optic



[pybitcoin/pybitcoin/passphrases/english_words.py at master · stacks](#)

A Bitcoin python library for private + public keys, addresses, transactions, & RPC - stacks-archive/pybitcoin

Setting up Discrete Sensors: Polarity, Mode, Range, and

On the other hand, if a sensor is set up to be NPN and it's normally open, the output will be 0 v if ON and a closed switch if OFF. If normally closed,



Digital Fiber Optic Sensor/Amplifier Wiring and Setting

Fiber optic sensor has a digital LED display and 3-wires out lines. Digital fiber optic sensor is used for detection, counting and position control



passman/js/vendor/zxcvbn/zxcvbn.js.map at master · nextcloud

? Open source password manager with Nextcloud integration - nextcloud/passman



Fiber Sensors

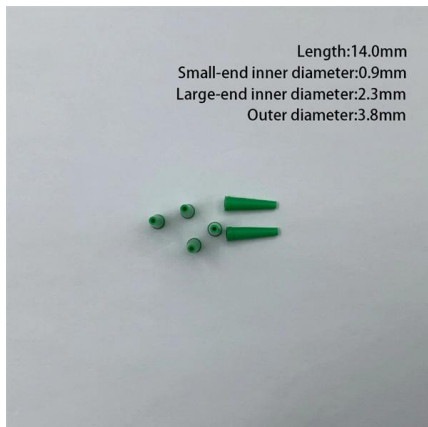
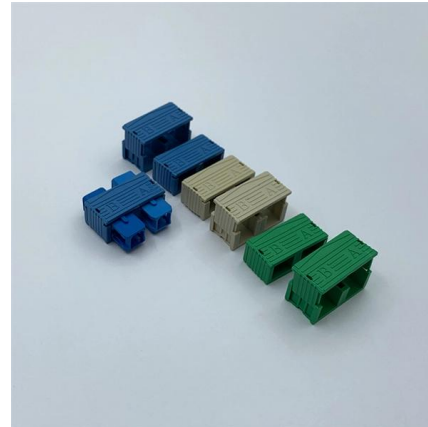
What Is a Fiber Sensor? A Fiber Sensor is a type of Photoelectric Sensor that enables detection of objects in narrow locations by transmitting light from a Fiber





INTELLIGENT DIGITAL FIBER OPTICAL SENSOR

To connect coaxial reflector optical fiber unit to amplifier, please connect the single core 2 Wh

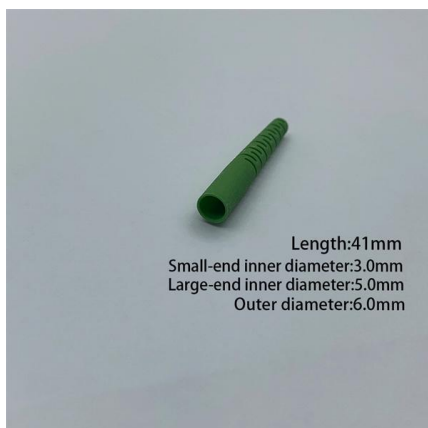


Fiber Sensors

Fiber Sensors almost always use LEDs as the light source. The light emitted from LEDs oscillates in the vertical and horizontal directions and is referred to as

Fiber-optic sensor

A fiber-optic sensor is a sensor that uses optical fiber either as the sensing element ("intrinsic sensors"), or as a means of relaying signals from a remote sensor to the electronics that process the signals



Photoelectric basics - Light-on or dark-on , Balluff

If no object is blocking the light beam to receiver the output is on, normally closed. If the target or object is in between the reflector or emitter then



PLC Chapter 6 Study guide Flashcards , Quizlet

Study with Quizlet and memorize flashcards containing terms like An electromechanical relay uses electromagnetism to operate contacts, A normally closed (NC) relay contact is closed when current

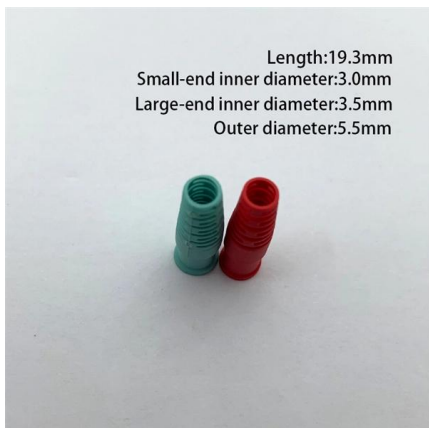


How to Specify Fiber-Optic Sensors , Machine Design

Fiber-optic sensors work well in tight spots and in applications with a high degree of electrical noise, but care must be taken when specifying these critical components.

What Do Light-on and Dark-on Mean for Photoelectric

Industrial sensor applications face challenges of digital or analog, NPN or PNP, normally closed and normally open, but for optical sensors, the



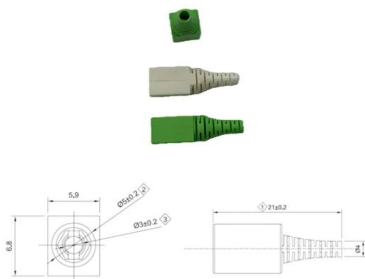
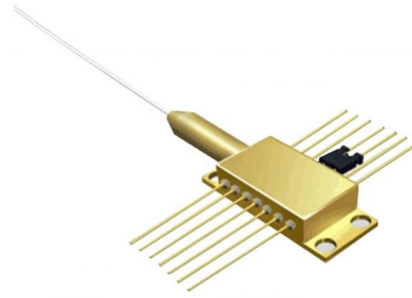
Fiber Optic Sensor : Types, Working, Interfacing & Its

These sensors are available at less cost, in small size and their fabrication is easy so replaced normal sensors that were normally used before



FIBER OPTIC SENSOR GUIDE

What is a Fiber Optic Sensor? ic amplifier and a unit. The amplifier emits and receives light energy and converts it to an electrical signal. The unit, a product for transmitting the light energy



WENGLOR ODX202 OPERATING INSTRUCTIONS

Contamination Output The contamination output (included with ODX202P0107) functions as a normally closed contact and is switched off if the Sensor is

ST Device Handler Update

I just pushed an update to the SmartThings device handlers for Konnected sensor devices. This update adds a new device preference setting



Microsoft Word

Fiber optic gyroscopes have several advantages over the mechanical and ring laser gyroscopes. The interferometer fiber optical gyroscopes (IFOG) is proven sensor in this field. Many methods exist for



DIGITAL FIBEROPTIC SENSOR TRAINING GUIDE

Make sure that the light enters the receiver with the translucent workpiece present and that the sensor turns ON and OFF by placing your hand between the sensor head and the workpiece.



Fiber Optic Cable Sensor

1. Proper Use This wenglor product is used in accordance with the following mode of operation: Both plastic fiber optic cables and glass fiber optic cables can be connected to fiber optic cable sensors.

What Do Normally Closed and Normally Open Mean?

When the magnet is next to the contact (the "normal" position) if you read an open on the wires or terminals, then the device is normally open, and if



Fiber Optic Sensors: Types, Working Principle

Explore fiber optic sensors: their working principles, types (intrinsic, extrinsic, hybrid), and diverse applications in mechanical, chemical, and structural health monitoring.



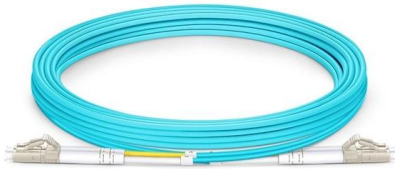
How to Specify Fiber-Optic Sensors , Machine Design

Output types can be set normally open or normally closed--as well as switching via sinking, sourcing, or push-pull. This allows the device to either sink or source the



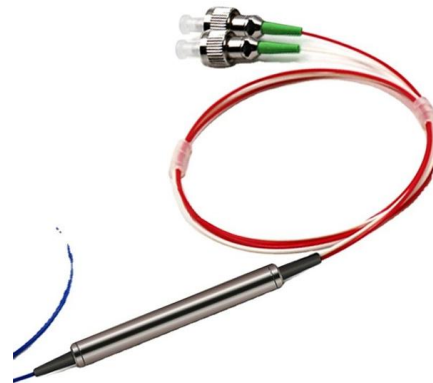
Photoelectric basics - Light-on or dark-on , Balluff

With photoelectric sensors, instead of normally open or normally closed we refer to light-on operate or dark-on operate because we are referring to



ODiSI Fiber Optic Sensor Installation Guide

This Application Note is intended to guide users of Luna's High Definition Fiber Optic Sensing (HD-FOS) system (the ODiSI) through the simple process of mounting a fiber sensor onto the surface of a test



Modeling and Simulation of Signal Processing for a Closed Loop Fiber

Schematic of a closed-loop fiber gyro The feedback signal is given in the form of digital ramp (Figure 3) to the optical phase modulator, and slope of the digital ramp is proportional to rotation rate .





NO and NC (Normally Open and Normally Closed) Proximity Sensor

Understand the PNP and NPN output configuration in proximity sensors. Learn the difference between NO (Normally Open) and NC (Normally Closed)



Contact Us

For datasheets, pricing, or custom high-speed optical interconnect solutions, please visit:
<https://www.syropy.com.pl>