

# **How to select the signal source for a beam splitter**





## How to select the signal source for a beam splitter

---



### How Does a Beam Splitter Work in Optical Applications?

Future Trends in Beam Splitter Technology The future of beam splitter technology is poised for further developments aimed at enhancing

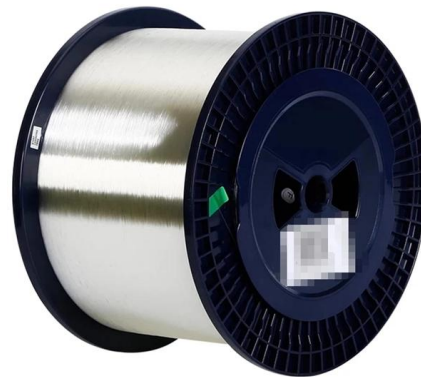


### The Buyer's Guide to Beam Splitters , Blue Ridge Optics

Matching the beam splitter's specifications to the characteristics of the light source ensures optimal performance. This minimizes light losses and aberrations while maintaining the

### Beamsplitters Selection Guide

This Beamsplitters Selection Guide outlines the core types of beamsplitters, explains how they work, and provides practical advice for choosing the best one for your application.



### What is a Beam Splitter: Types And Applications

A beam splitter is a device used to separate or combine light. It is widely used in guiding light in optical systems, enhancing imaging and



### The Buyer's Guide to Beam Splitters , Blue Ridge Optics

Here are some key factors to consider when choosing a beam splitter for your project. The point where incoming light first encounters a beam splitter is called the point of incidence.



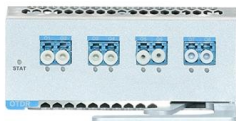
### How to Select a Beamsplitter , Laser Focus World

A beamsplitter is an optical device that divides an incident beam of light into two parts: one part is transmitted through the splitter, while the other is reflected.



### How to Select a Beamsplitter

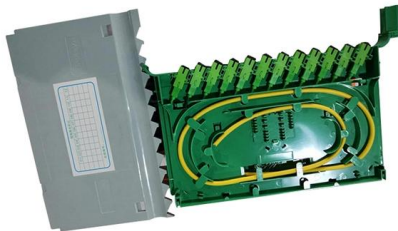
Learn how to select a beamsplitter for your optical needs. Explore types, applications, and considerations and get expert insights now!





## What Is an Optical Splitter?

Therefore, the reallocation technique of optical signal can be achieved in multiple fibers, which is how fiber splitter comes into being. Specifically



## What are Beamsplitters?

Types of Beamsplitters Standard Beamsplitters are commonly used with unpolarized light sources, such as natural or polychromatic, in applications where polarization

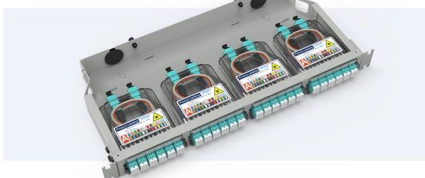
## Understanding High Power Polarization Beam

Polarization beam combiners/splitters are fascinating devices used in optics and telecommunications. In this blog, we'll delve into the world of High



### Pre-Terminated Patch Panel

- Multi-application support
- Flexible configuratvion
- Modular design



Cable Gland Plug  
20mm Cable Gland Plug



MPO-12 up to 96 cores  
MPO direct connection 48 ports



Mounting Bracket  
Semi-open mounting holes

## Beamsplitters Selection Guide For Optical Applications

This beamsplitter guide highlights the functionality, form factor, role and key considerations when selecting beamsplitters for optical applications.



## Beamsplitter

The situation is different for the two beams falling back on the source. Here, one beam is reflected at both interactions with the beamsplitter, whereas the other is transmitted at both interactions.



## Beam Splitter Selection Guide

Optical Beamsplitter Selection Guide Overview  
An Optical Beamsplitter is an optic or optical device that is used to split a beam of light in two. Newport offers a wide variety of Beamsplitters in various shapes.

## Beam Splitters - optical power splitter, beamsplitter, thin

Beam splitters are devices for splitting a laser beam into two or more beams. There are different types, including polarizing and non-polarizing versions.



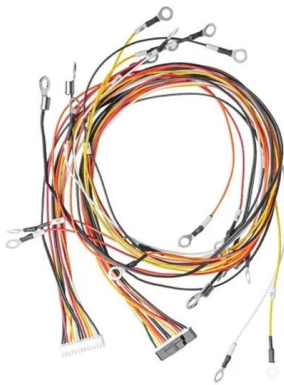
## Beamsplitter

For most spectral ranges, this will mean the center part of the beamsplitter has a different coating from the part used for the signal beam. For far-infrared pellicle beamsplitters, there is usually a hole in the



## Beam Splitter Input-Output Relations

The elements of the beam splitter transformation matrix  $B$  are determined using the assumption that the beamsplitter is lossless. While a beamsplitter is never lossless, it is a good approximation for most



## Optical Splitters Demystified: The Silent Heroes

? What is an Optical Splitter? An Optical Splitter, also known as a beam splitter, is a passive optical device that divides a single input optical signal

## How to Select the Perfect Beam Splitter for Your Optical Setup

Choose cube beam splitters for compact systems or scenarios requiring precise beam alignment. They are ideal for interferometers and other setups with limited space and where ease of



## How to Choose the Right Beam Splitter?

Therefore, when choosing a beam splitter, we must consider the requirements of reflection transmittance, wavelength range, and polarization. Manufacturers such as Mok Optics offer a variety



## Understanding Beamsplitters: A Comprehensive Guide

Beamsplitters are optical components used to split an incoming light beam into two independent beams. Depending on the application, they can also combine two



### Beam Splitter

A beam splitter is defined as an optical device that effects a linear transformation of fields presented at two input ports, producing output beams that are related to the input fields in a characteristic manner

### How does a beam splitter work? Common types and use cases

Understanding Beam Splitters Beam splitters are essential optical components used to divide a beam of light into two or more separate beams. They play a crucial role in various scientific,



### [unsupervised\\_topic\\_modeling/topics/en/15/50/100/topics](#) at

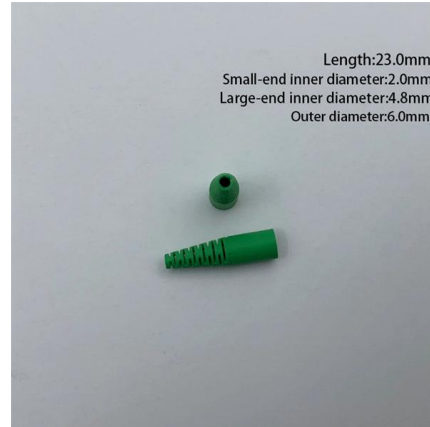
Contribute to [annontopicmodel/unsupervised\\_topic\\_modeling](#) development by creating an account on GitHub.





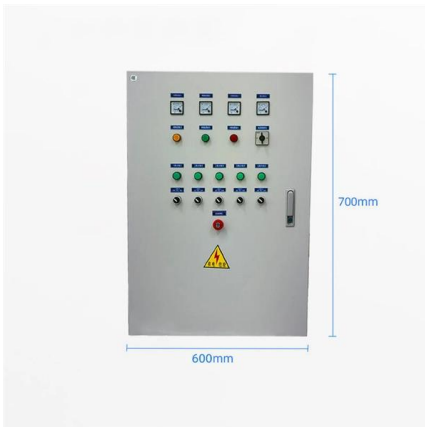
## Understanding Beamsplitters: Types, Principles, and

This article explores the fundamental principles and diverse applications of beamsplitters, detailing their different types and uses in fields such as optics



## How beam splitters affect signal attenuation and polarization

Conclusion Beam splitters are indispensable components in many optical systems, influencing both signal attenuation and polarization. By understanding these effects, engineers and



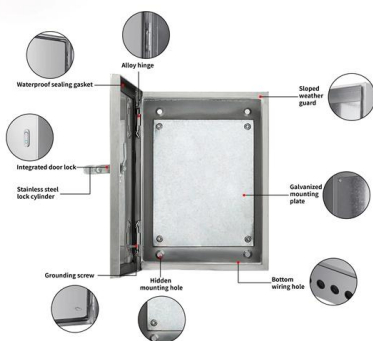
## How Beamsplitters Work: Types, Mechanisms, and

This article explains the working principles of beamsplitters, detailing how they divide a beam of light into two separate paths, the different types of



## How beam splitters affect signal attenuation and polarization

To mitigate the issues of signal attenuation and polarization changes, several strategies can be employed. First, selecting the appropriate type of beam splitter for the specific application is



## Beam splitter , Description, Example &



## Application

A beam splitter is an optical device that splits a single beam of light into two or more beams. It is commonly used in scientific and industrial applications.



## Contact Us

---

For datasheets, pricing, or custom high-speed optical interconnect solutions, please visit:  
<https://www.syropy.com.pl>