



Syropy AI Connectivity

How to select the circuit breaker for the primary distribution box





Overview

The procedure of selecting a circuit breaker is an important aspect of assuring electrical safety & efficient system performance. It is typically open-type, allowing easy replacement of contacts and parts, and can be equipped with various. The circuit breakers in the distribution box are divided into (upper level) main power circuit breakers and multiple (lower level) circuit breakers.



How to select the circuit breaker for the primary distribution box

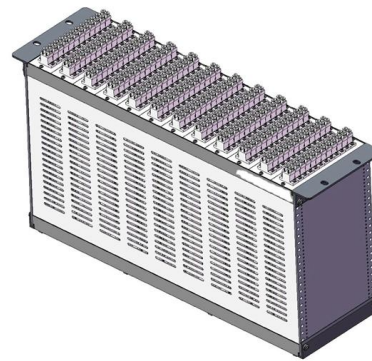


The basics of primary distribution circuits (substation)

There are several configurations of distribution systems. Most distribution circuits are radial (both primary and secondary). Radial circuits have

Understanding Circuit Breaker Wiring Configurations in

Correct wiring methods for circuit breakers within distribution boxes are fundamental to ensuring electrical safety and compliance with established codes.



7 Basic Guidelines for Selection of a Circuit Breaker

Several essential factors should be covered when selecting a circuit breaker to ensure optimal performance & safety. Here are seven general



Size configuration of multiple circuit breakers in the

Choose the right size and setup for multiple circuit breakers in your distribution box to ensure safety, code compliance, and room for future upgrades.

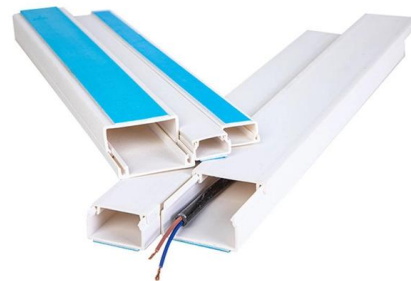


Breaker Box Diagram and Wiring Guide

Breaker Box Diagram and Wiring Overview for Home Electrical Systems When planning the electrical system of a home or building, it's essential to understand

System Arrangements

Typical service entrance equipment consists of a metal-clad switchgear main circuit breaker and metal-enclosed fused feeder switches. Metal-clad circuit breakers may be used instead of metal-enclosed



How to select the superior and subordinate of the circuit breaker in

From the technical documents of selective protection of circuit breakers, designers should focus on the following points. 1) For the selective coordination between the superior and subordinate, it is more



Power Distribution Boxes Explained Simply

Key Takeaways A power distribution box (also called PDU or distro) directs electricity from a main source to multiple circuits. It acts like a hub or traffic



The Ultimate Guide to Distribution Box Types

In any electrical system, the distribution box is the heart and brain, a critical component that safely manages and distributes power from the main source to

What Is a Main Circuit Breaker and How Does It Work?

Your electrical panel is full of circuit breakers running through the panel, and the main circuit breaker serves an especially important function.



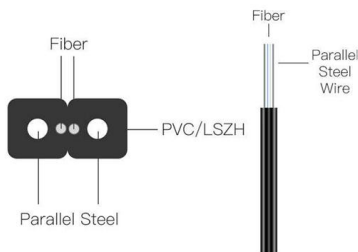
Single Phase Distribution Box Definition and Main Parts

You can trust a single phase distribution box to help your circuits work well and stay safe every day. **Key Takeaways** A single phase distribution box helps control and share electricity in your home or



What is the difference between MCB, MCCB, ELCB, and

This article briefly describes the most common breaker-related protection devices in low-voltage applications: MCB, MCCB, ELCB, and RCCB.



6 principles for circuit breaker selection

When selecting this type of circuit breaker, pay special attention to the following selection principles: The allowable current carrying capacity of the line is not less than the setting value of the long-delay

The Ultimate Guide to Distribution Box Types

Choosing the correct distribution box is a crucial decision that impacts the safety, functionality, and cost of your electrical system. Here are the key factors to consider:



The Ultimate Guide to Circuit Breaker Wiring

Messy distribution boxes are dangerous and very hard to fix. This guide shows you how to organize circuit breaker wiring properly. You will learn to build a safe,



Understanding Distribution Boxes: A Comprehensive Guide

A distribution box, also known as a power distribution box or electrical distribution box, is used to distribute electrical power safely to multiple

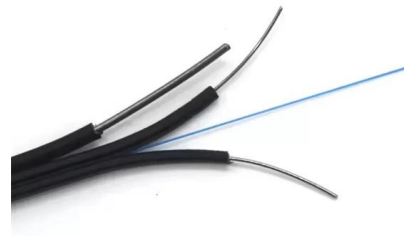


Circuit Breaker Distribution Panel

Premium Electric electricians on how your circuit breaker distribution panel works, an easy-to-follow guide for beginners.

The Breaker Box: An In-Depth Look at Circuit Breaker

The wiring of a circuit breaker box entails the meticulous linking of electrical circuits within a structure to a main distribution panel. The procedure



Circuit Breaker Distribution Panel: What It Is and How It

A circuit breaker distribution panel, often referred to as a breaker panel or electrical panel, is the central hub of your home or business's electrical



Selection of a circuit-breaker

To ensure correct operation, a thorough testing procedure should be followed, which should include inspections for load distribution, circuit breaker

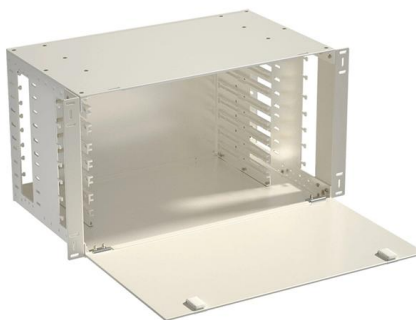


Complete Guide to Circuit Breaker Selection and Setting

Master circuit breaker selection and setting methods, learn ACB, MCCB, MCB types and parameter settings. Get the guide now to ensure safe and reliable electrical

Distribution boards components

Distribution boards (generally only one in residential premises) usually include the meter (s) and in some cases (notably where the supply utilities impose a TT earthing system and/or tariff



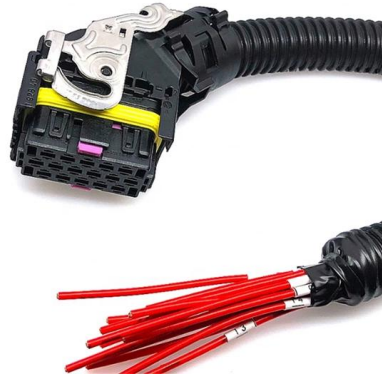
How to Choose a House Distribution Box , CHINT global

Reliable Circuit Breakers: Circuit breakers must be reliable to consistently manage power distribution and provide safety in various conditions.

Distribution Boxes: Types and Functions



Learn what an electrical distribution box (DB/distribution board) is, its main components (MCB/RCCB/RCBO, SPD, busbar) and common types.



7 guidelines to select correctly rated circuit breaker

Selection of rated circuit breaker The general procedure for the selection of correctly rated circuit breaker follows the following scheme of seven

Contact Us

For datasheets, pricing, or custom high-speed optical interconnect solutions, please visit:
<https://www.syropy.com.pl>