

How to protect your electrical distribution box



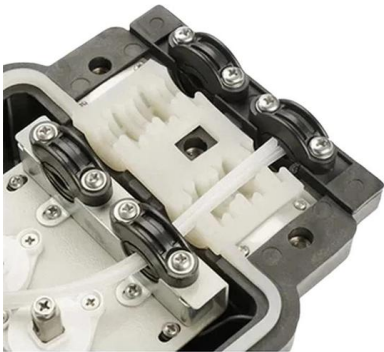


Overview

The distribution box should be installed in an area close to the power supply to reduce power loss and ensure safety. Avoid installing in a humid and corrosive environment to prevent equipment damage. The key protective devices—such as fuses, circuit breakers, relays, and surge protectors—that help ensure the safety, reliability, and efficiency of power distribution. This essential piece of equipment serves as the nerve center of your electrical system, managing power flow and protecting circuits from overloads and faults.



How to protect your electrical distribution box

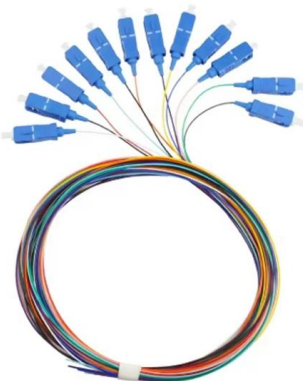


What is a Distribution Box? - A Comprehensive Guide

By understanding these components, you can appreciate how a electrical distribution box works to protect and manage your electrical system.

Key Material Requirements for Distribution Box

The key material requirements for distribution box are used in constructing an electrical distribution box play a crucial role in its durability,



Electrical Distribution Box Installation Mistakes

The Electrical Distribution Box is a very important part of the power system, improper installation will cause a lot of danger and loss. Here are some things that go

The Complete Guide to Distribution Box: Installation, Types & More

Enhanced safety features in premium distribution boxes include improved arc fault protection, better insulation systems, and more reliable protective devices. These features reduce



How to Safely Install and Maintain Power Boxes

Learn how to safely install and maintain power boxes with expert tips on preparation, installation, and regular maintenance for optimal performance.



What Should You Not Touch in a Breaker Box? A Comprehensive Guide

Always ensure that any tool you use is rated for electrical work and meets safety standards. Additionally, wearing appropriate personal protective equipment (PPE) is essential for



The installation requirements for the distribution box

A distribution box is the heart of any electrical system. It takes the incoming power and safely distributes it to different circuits throughout your





Where is the best place to put a Electrical distribution box?

Additionally, if the box is located in an area with high humidity or moisture, it is important to take steps to mitigate these effects - consider using cooling fans and dehumidifiers to ensure your



Electrical Power Distribution Box: A General Installation

A practical general guide to installing and maintaining electrical power distribution boxes for international buyers. Includes safety best practices and

Distribution Boards

Distribution boards, often referred to as electrical panels or breaker boxes, serve as the nerve center of any electrical system. Here we explore the crucial parts of a distribution board and gain insights into



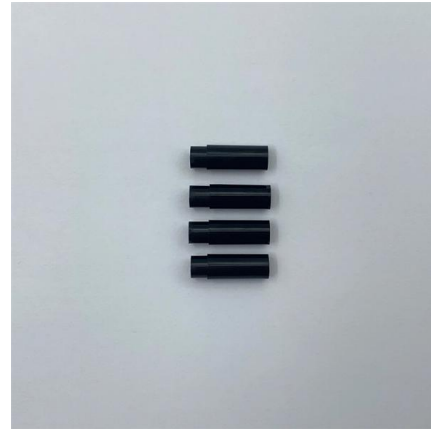
Distribution Boxes Explained: Types, Functions, and

A distribution boxes is an essential device that safely and efficiently distributes electrical power to different areas within a building or facility. It is



Distribution Box Installation: A Complete Guide to Safe

Wear Protective Gear: Use insulated gloves and safety goggles when handling electrical components to protect against shocks and debris. Follow Local



Distribution Box Installation: A Complete Guide to Safe

The distribution box, often referred to as a breaker box, fuse box, or electrical panel, is a critical component of any electrical system. It acts as the central hub for

What Is an Electrical Distribution Box and Why Is It

An electrical distribution box distributes power safely, prevents overloads, and protects circuits, ensuring efficient and reliable electrical systems.



Outdoor Electrical Box: Protect Your Wiring with These Expert Tips

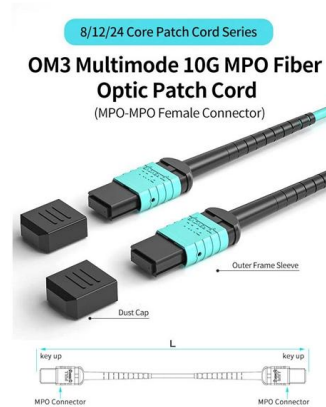
Protect your outdoor wiring with expert tips on choosing, installing, and maintaining outdoor electrical boxes. Ensure safety, durability, and long-lasting performance.



The Complete Guide to Distribution Box: Installation, Types & More

Making Smart Electrical Infrastructure Decisions
Distribution boxes form the foundation of safe and reliable electrical systems. Understanding their components, installation requirements, and

AOC
QSFP28 to 4*SFP28
100G
OM3/OM4



Understanding Distribution Boards: Your Essential Guide to Electrical

Ultimately, proper distribution board management is about more than just maintaining the safety and efficiency of your electrical system; it's about protecting your property and the people

What Is an Electrical Distribution Box? A Complete Guide

Their role in protecting circuits from overloads and faults underscores their importance in maintaining system integrity. Fundamentally,



Understanding Distribution Boxes: A Comprehensive Guide

Learn what a distribution box is, its types, and how to choose the right one for your project. Includes clear examples and expert tips.





Protection for the Electrical Distribution System

To counter the risks posed by faults and abnormal conditions, a robust protection scheme is essential to ensure that the electrical distribution system remains safe, reliable, and efficient.



DB BOX (Electrical Distribution Box): Everything You

Conclusion Selecting the right Electrical Distribution Box is vital for ensuring the safety and efficiency of any electrical system. Whether your project

The installation requirements for the distribution box

Whether it is residential buildings, commercial facilities or industrial sites, the correct and safe installation of distribution boxes is crucial to ensure



Requirements And Specifications For Installation Of

The distribution box should be installed in an area close to the power supply to reduce power loss and ensure safety. Avoid installing in a humid and



DB BOX(Electrical Distribution Box): Everything You

Wiring: Next, the electrical cables will be connected to the incoming power source (like the main distribution panel) and the outgoing circuits. Circuit



Understanding Distribution Boxes: A Comprehensive Guide

A distribution box, also known as a power distribution box or electrical distribution box, is used to distribute electrical power safely to multiple

Contact Us

For datasheets, pricing, or custom high-speed optical interconnect solutions, please visit:
<https://www.syropy.com.pl>