

How to prevent electrical distribution boxes on construction sites from being pulled



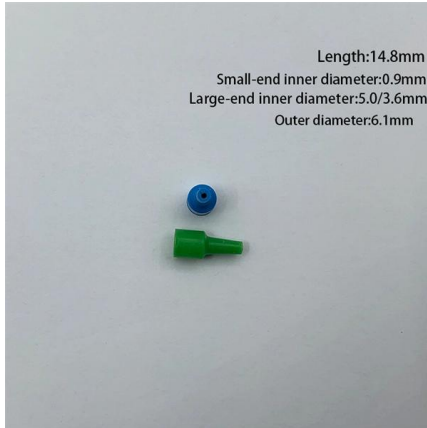


Overview

This article examines how modern portable power cabinet systems—such as E-abel distribution boxes paired with industrial waterproof plug connectors—improve temporary power safety on construction sites. Through a real-world project scenario, we explore how structured connectors, IP67 plug systems. Order this product from HSE Books It explains what to do to reduce the risk of accidents involving. Any electrical installation, whether permanent or temporary, should be installed according to all codes, standards, and regulations. With the increasing complexity of construction projects and the demand for efficiency, understanding the guidelines surrounding. This is what we mean by proactive safety—it's not just about rules, but about building a site culture where every single person knows how to manage electrical risks.



How to prevent electrical distribution boxes on construction sites fr



Everything You Need to Know About Temporary Power

Portable construction boxes give you the immediate, consistent electricity you need to provide essential services at all times. Since power

How to Make Temporary Power Safer on Construction

Through a real-world project scenario, we explore how structured connectors, IP67 plug systems, and modular distribution cabinets create safer,



Essential Guidelines for Safe Temporary Electrical

This article aims to provide a comprehensive overview of the essential guidelines for safe temporary electrical installations on construction sites, focusing on Best

Electrical safety on construction sites

This guidance is aimed at those responsible for planning and subsequent management, and those who control the installation and use of electrical systems and equipment on construction sites.

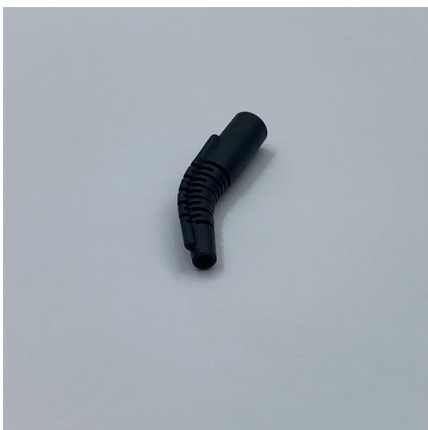


Electrical Safety Tips: How to Reduce Electric Shock

It is highly recommended to undergo electrical safety training to gain knowledge about potential hazards, safety procedures, and best practices in

Key Points Of Installation And Collocation Of Distribution Box In

1. The power distribution system at the construction site shall be distributed in different levels. The main distribution box (or distribution room) shall be set up. The distribution box shall be set



Electrical Safety in Construction Areas

Every year, electrical incidents cause serious injuries, fires, and fatalities on construction sites. This article covers the key electrical hazards, safe



Temporary Power Safety: Distribution Boxes + Industrial

Introduction Temporary power on construction sites is essential, messy, and potentially dangerous. Pairing E-abel distribution boxes with Weipu

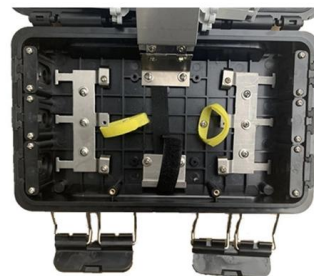


How To Maximize Worksite Safety When Using Power Distribution Boxes

It's important to make sure you review all OSHA regulations and other applicable standards when implementing temporary power distribution boxes. If you're working on a

Best Practices for Installing Temporary Electrical Systems on

Learn how to set up and maintain reliable temporary electrical systems for construction projects.



Five mistakes when installing temporary distribution boxes and how to

Temporary distribution boxes are indispensable at construction sites, events and temporary workplaces. Yet things often go wrong when installing or renting these installations,



How to Make Temporary Power Safer on Construction

Loose wiring, exposed connectors, and unstable electrical connections can cause shocks, equipment failures, or costly downtime. This article examines



5 Often-Missed Electrical Safety Tips for Construction Sites

In construction electrical service, there's no room for shortcuts.

Safety requirements of distribution box

The distribution box has the characteristics of small size, simple installation, special technical performance, fixed location, unique configuration function, not limited by



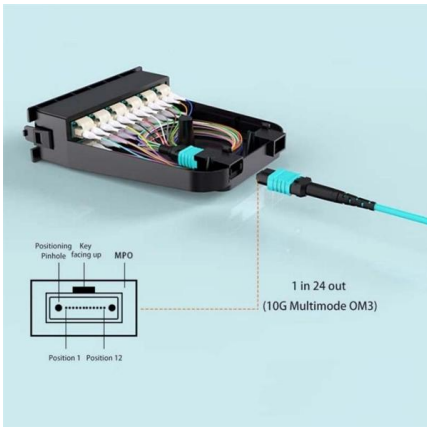
Five mistakes when installing temporary distribution boxes and how to

In this article you will read about the five most common mistakes when installing temporary distribution boxes and practical tools to avoid them. Whether you are an installer yourself



Quality Control for Installation and Construction of Electrical Riser

Master the key quality control methods for electrical riser & distribution box installation. Ensure safety, compliance, and prevent hazards in building electrical systems.

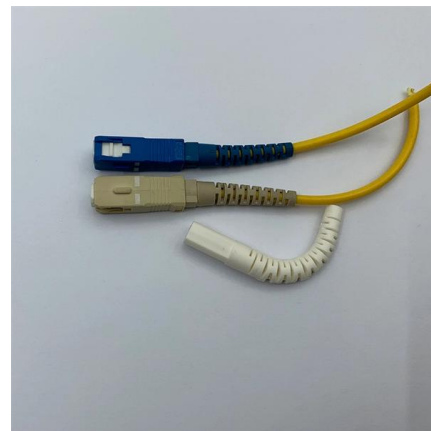


Safety

The awareness of electrical and fire hazards on construction sites has grown through the years as frequent incidents of fires and accidents could not be

Managing Electrical Safety to prevent accidents on

Construction sites can effectively prevent electrical accidents through essential control measures including proper insulation of live wires, strategic



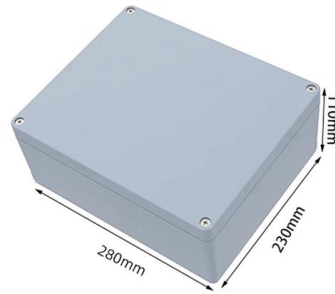
The installation requirements for the distribution box

A distribution box is the heart of any electrical system. It takes the incoming power and safely distributes it to different circuits throughout your



Installation Standards and Safety Precautions for Distribution Boxes

1. Switch box shall be distributed by the final sub-distribution box.
2. The power distribution box and switch box must be rainproof and dustproof.
3. When the construction site stops



A Guide To Electrical Safety On Construction Sites

Master electrical safety on construction sites with this essential UK guide. Learn to identify hazards, comply with regulations, and protect your team.

Electrical Hazards On Construction Sites & How To

If you're managing a construction site and are concerned about electrical safety, you're in the right place! In this guide, we'll talk about the



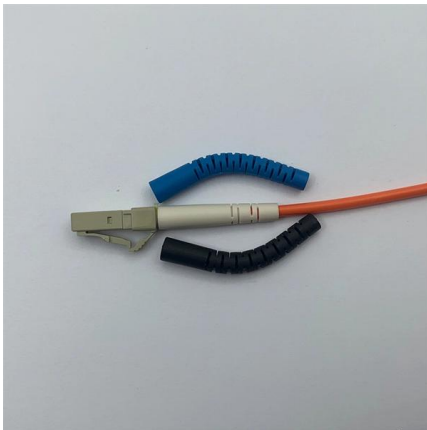
unsupervised_topic_modeling/topics/en/15/50/100/topics at

Contribute to [annontopicmodel/unsupervised_topic_modeling](#) development by creating an account on GitHub.



Cautions and Requirements for Installation of

Distribution box is a low-voltage distribution device which assembles switchgear, measuring instruments, protective appliances and auxiliary equipment in a closed



1926.405

Electrical continuity of metal raceways and enclosures. Metal raceways, cable armor, and other metal enclosures for conductors shall be metallically joined together into a continuous electric conductor

Electrical

Electrical Construction Electricity has long been recognized as a serious workplace hazard. OSHA's electrical standards are designed to protect employees exposed to dangers such as electric shock,



Contact Us

For datasheets, pricing, or custom high-speed optical interconnect solutions, please visit:
<https://www.syropy.com.pl>