

How to mount cable trays on the wall





How to mount cable trays on the wall



How to install a cable tray to a wall?

Wall supports RVK are used for mounting 40 mm height KR-type cable trays to wall, mounting rails AS, ceiling supports HK1, HK2 and TP2 from the inner side of the

How to Install Cable Tray: A Comprehensive Guide to Different Cable

Welcome to our step-by-step guide on installing cable trays! In this video, we'll explore the different types of cable trays available and provide detailed instructions for their installation.

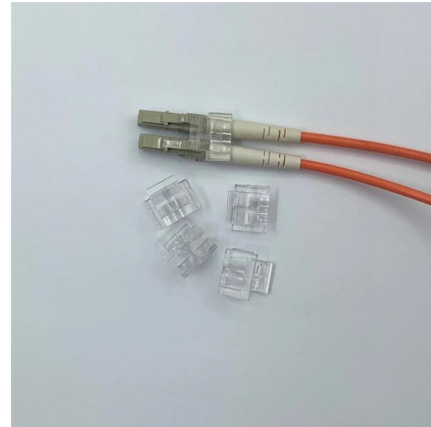


How To Install Cable Tray On Wall: A Step-By-Step Guide

Learn how to install a cable tray on a wall with this comprehensive guide. Step-by-step instructions, tools needed, and safety tips included.

How do I mount a cable tray to the wall and floor using an end bracket

How do I mount a cable tray to the wall and floor using an end bracket? How to make wall support and ground installation for cable trays with end bracket? -



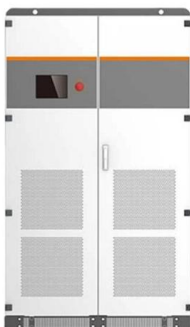
Cable Tray Installation

4. What materials are commonly used for cable trays? Depending on the application and environment, fiberglass, aluminum, and steel (galvanized or stainless) are typically used. 5. What are the standard



How To: Install Wall Brackets for Cable Trays and Ladders

Welcome to our comprehensive guide on installing wall brackets for different types of cable trays and cable ladders! In this video, we will walk you through



5 Simplified Steps To Install a Cable Tray

By following these steps, you can ensure a safe, stable, and well-organized cable tray installation.



How To Use Cable Tray Architecture To Finish A Wall?

The guide includes diagrams for mounting cable trays on walls using pre-fabricated flanges or channels, laying cables, and selecting the appropriate

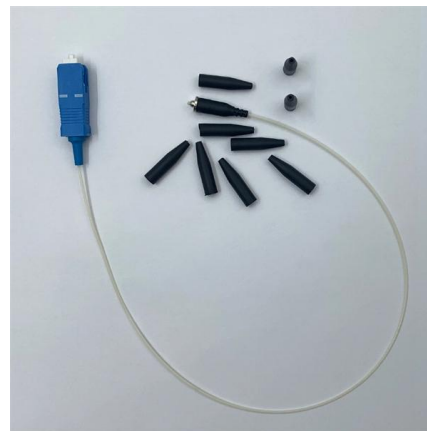


How do I mount a cable tray to the wall and floor using an end bracket

The end of the cable tray is attached to the wall or the floor with two end brackets (RÄF). The end bracket is fixed to the shelf using the screw set included with the end bracket.

How to install a cable tray and wire mesh tray to a wall?

Cable trays are attached to wall support YPK with M6x30 screws and M6 nuts. 00:32 Wire mesh tray Joint WMT CL is used to attach wire mesh tray to the wall support YPK.



How to install a cable tray to a wall?

When installing, the edge of the cable tray is lifted onto the straight tip of the bracket. The other edge of the cable tray is pressed into place from below. Need more



Cable Tray , Wire Mesh, Ladder Tray and More Wire Management

A cable tray system consists of metal or plastic trays that are mounted on walls or suspended from the ceiling. The trays are designed to hold cables securely, protecting them from damage and reducing



Cable Tray Installation

Learn everything about cable tray installation with our complete guide. Discover types, steps, and safety tips for efficient electrical cable management.

Cable Tray Installation Guidelines , PDF , Galvanization

This document provides details on installing cable trays and their support systems. It includes diagrams showing how to mount cable trays on walls using pre



EZ-Path Cable Tray Retrofit Device

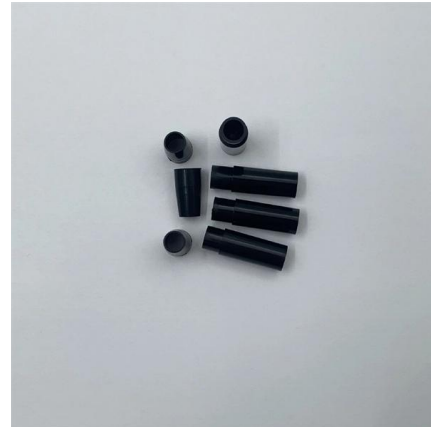
The EZ Path® Cable Tray Retrofit Device provides a fast, code-compliant way to restore firestopping performance in cable trays with up to 100% visual fill.

Master Cable Tray Installation: A



Professional Step-by

Learn how to install cable trays for large-scale projects with our professional, step-by-step guide covering industry standards, safety protocols,

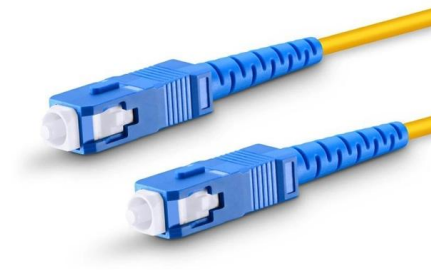


Cablofil CU100GC Hot Dip Galvanised Steel 100mm Cantilever Bracket

Cantilever bracket for wall mounted support of 100 mm cable trays. Fixed mounting provides stable routing. Hot dip galvanised steel delivers corrosion resistance with 400 N safe working load to IEC

How to mount a cable tray to a wall?

Wall support K is attached to joint RSS using the screw set included with the wall support. The distance between the cable tray and wall can be adjusted with a range of 0-40mm.



Cable Tray and Reels , Wire and Cable Management

Fast installation with dependable support. Everything you need to build a cable management system, including Cablofil wire mesh cable tray, ladder cable tray,



Fiber Optic Distribution Frame (ODF) , Rack & Wall Mount

Fiber optic distribution frame ODF: Rack-mount, wall-mount types. 12-864 fiber capacity. 19-inch standard. SC/LC/FC adapters. Splice tray, cable management. For data center, central office. ISO



How To Use Cable Tray Architecture To Finish A Wall?

This guide provides step-by-step instructions on installing a cable tray on a wall, covering different types of cable trays, tools needed, and safety tips.

Mastering Cable Tray Installation , Step-by-Step Guide for a Seamless

Learn how to install cable trays correctly. Get the ultimate step-by-step guide on setting up a seamless and reliable cable management system.



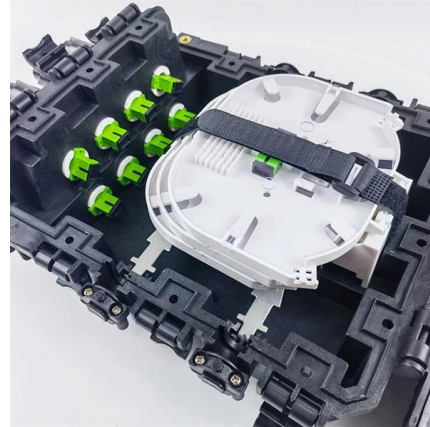
Efficient Cable Tray Installation Methods for Organized

Discover efficient methods for installing cable trays to organize power, data, and security cables. Explore wall, ceiling, and floor mounting options



How to install a cable tray and wire mesh tray to a wall?

00:00 Cable tray Wall support YPK is used to attach cable ladders to walls from above. Cable trays are attached to wall support YPK with M6x30



5 Steps to Learn How to Install Cable Trays

Installing a cable tray system requires careful planning to ensure it can support the weight of the cables and adheres to electrical safety codes. Here

CableOrganizer : Online Shopping for The Best Prices on Wire

Shop online for thousands of cable management products, as well as networking, electrical, and industrial safety supplies. Renowned customer service!



Contact Us

For datasheets, pricing, or custom high-speed optical interconnect solutions, please visit:
<https://www.syropy.com.pl>