

How to modify a diode into a laser switch





How to modify a diode into a laser switch



An Introduction to Laser Diodes

An Introduction to Laser Diodes Learn about the laser diode, including package types, applications, drive circuitry, and some laser diode specifications.

Laser Diode Driver Basics and Design Fundamentals

Laser diodes are highly susceptible to damage from forward and reverse voltage surges and transients, and they require a special set of



How to Use Laser Diode: Examples, Pinouts, and Specs

Learn how to use the Laser Diode with detailed documentation, including pinouts, usage guides, and example projects. Perfect for students, hobbyists, and

How to Use Laser diode: Examples, Pinouts, and Specs

Learn how to use the Laser diode with detailed documentation, including pinouts, usage guides, and example projects. Perfect for students, hobbyists, and developers integrating the Laser diode into

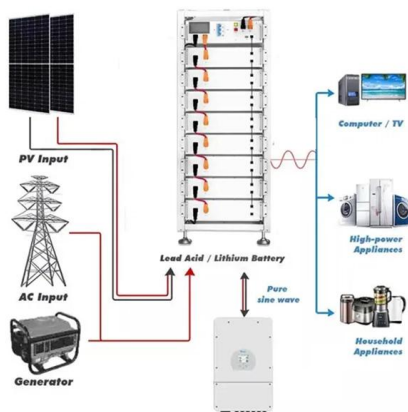


Hands-On Tutorial for Laser Diode Integration with Arduino

Step-by-step guide to wiring, coding, and safely integrating a laser diode with Arduino. Includes safety tips, troubleshooting, and beginner-friendly advice.

Koch Lab: Research/How to build your own laser diode

The system requires the user to wire on/off switches in order to send signals to the laser diode holder (TCLDM9) to either turn on or off the



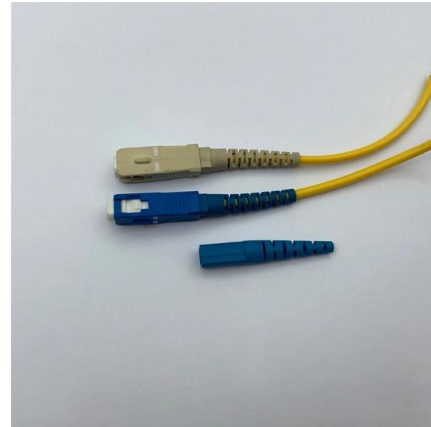
Gain Switching - gain-switched lasers, pulse generation,

Gain switching is a technique for generating short optical pulses in a laser by modulating the laser gain. It is often used with laser diodes.



Turn on a laser diode with Arduino

We learn how it works and how to use a laser diode in our electronics and Arduino projects



LASER GAIN SWITCHING TECHNIQUES AND CIRCUIT MODELLING

semiconductor laser diode, that is being driven with a step recovery diode pulse generator der to switch t off as desired. The second technique involves a mono-cycle scheme that allows a step recovery

Wiley Online Library , Scientific research articles, journals, books

Hier sollte eine Beschreibung angezeigt werden, diese Seite lässt dies jedoch nicht zu.



Make a Simple Laser Diode Module

Make a Simple Laser Diode Module: Laser diodes are quite useful in some ways especially in trigger/alarm systems such as triplight mechanisms or even in DIY





Arduino for Beginners: MOSFET Laser Switch

In this video, I build a laser driver circuit using the schematic from the second part.

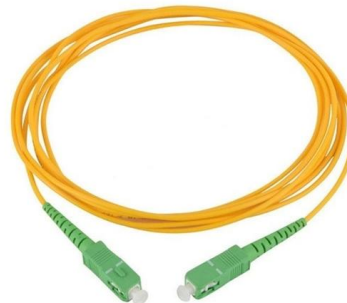


Laser Diode Driver Circuit - A Beginners Guide - Flex PCB

Switching Transistor: A transistor is used to switch the laser diode on and off rapidly, enabling pulsed operation for applications like data transmission

Using a current mirror for high-speed switching of a laser

I am looking to design a circuit to pulse a 532 nm laser diode at approximately constant optical power output (current of ~ 200 mA), with pulse



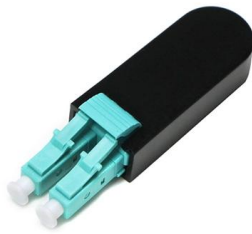
Controlling a 5V Laser Diode with Raspberry Pi Pico W

Learn how to safely control high-power components like a 5V laser diode using the Raspberry Pi Pico W and a simple transistor circuit. Find this and other hardware



Laser Diodes Explained: From Light Source to Everyday

Unlock the secrets of laser diodes! Explore how they work, their construction, different types, and surprising uses in everyday tech - from CD

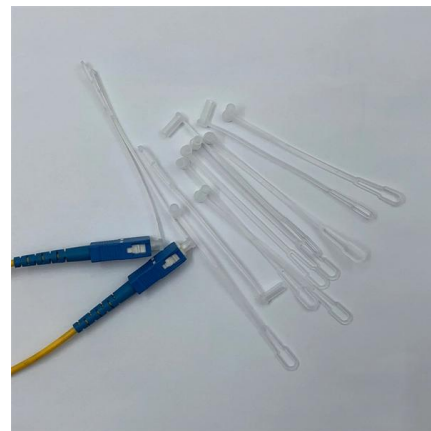


Diode Laser Etching of a PCB. DIY From a to Z.

Diode Laser Etching of a PCB. DIY From a to Z.: 3D-printers have opened endless possibilities for home production and rapid prototyping. Now you can easily

Interfacing laser diode module with Arduino

Learn how to connect and control a laser diode module using Arduino in a few simple steps.



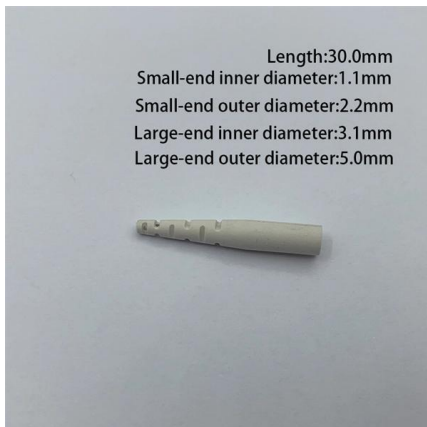
Laser Diode

Laser Diode: Construction, Working, Types, Advantages, Disadvantages & Applications Laser diode similar to LED is used for producing light but the light is



Laser Pointer Switch using arduino

Summary of Laser Pointer Switch using arduino
This article details building a light-activated switch using an Arduino. The project samples ambient



Turn on a laser diode with Arduino

If the diode incorporates some type of controller (driver), or when reusing a pointer, we will keep all the electronics associated with the laser and simply use the

How to Build a Laser Diode Circuit

They are used in laser printers, laser fax machines, laser pointers, measurement equipment, bar-code and UPC scanners, and in high-performance imagers, as



Laser ON/OFF switch using NPN transistor

How to hookup a laser module to an Arduino, using an NPN transistor to control it. Calculation, based on 20mA typical operating current draw from the laser module.



How to Build a Laser Diode Circuit

In this article, we will show how to connect and build a simple laser diode circuit to get light output from a laser diode.



Contact Us

For datasheets, pricing, or custom high-speed optical interconnect solutions, please visit:
<https://www.syropy.com.pl>