

How to make distribution boxes safer





Overview

The best box keeps your electrical system safe and ready for changes later. Many experts say you should follow these steps: Make clear goals for your project. Choosing or upgrading a distribution box can be confusing because product labels, circuit counts, and safety features are not always explained clearly. You must make safety your top priority when working with low voltage distribution boxes. Pairing E-abel distribution boxes with Weipu industrial waterproof plugs creates a rugged, IP67-rated temporary electrical solution that resists weather, prevents accidental contact, simplifies field wiring, and helps you meet safety compliance. It helps organize, protect, and control electrical connections in residential, commercial, and industrial electrical systems.



How to make distribution boxes safer



The Secret to Safer Distribution Boxes

In this video, we introduce YC7VAN Overvoltage and Undervoltage Protector -- a compact, reliable solution for distribution boxes, factories, and commercial

Key Material Requirements for Distribution Box

Learn the key material requirements for distribution box, Discover how the right materials ensure long-lasting performance and safety.



The Importance of Distribution Boxes in Electrical Systems

Learn more about how distribution boxes play a critical role in the safe and efficient operation of electrical systems.

Understanding Distribution Boxes:A Comprehensive Guide

Can I install a distribution box myself, or should I hire a professional? Hiring a licensed electrician is recommended to avoid improper installation, which



Essential Steps for Effective Septic Distribution Box Installation

Learn how to install a septic distribution box with essential steps, tips, and maintenance recommendations for long-lasting efficiency.



6 Ways to Improve Distribution Center Safety

Distribution center workers face various risks -- including heavy equipment, weighty packages, electricity and the potential for slips or falls.



Distribution Safety

Good community engagement is the first and most important step in ensuring a safe distribution. Community engagement and accountability (CEA) is a Red Cross





How to Choose a Distribution Box for Safer, More Efficient Power

Choosing or upgrading a distribution box can be confusing because product labels, circuit counts, and safety features are not always explained clearly. Add rising energy costs and the



Comprehensive Guide to Septic Systems and Distribution Boxes

Introduction to Septic Systems and Distribution Boxes Septic systems are a crucial component of wastewater management for homes and businesses not connected to municipal sewer

How to Install a Cable Distribution Box Safely and

In modern electrical systems, cable distribution boxes (also known as electrical distribution boxes or distribution boxes) play a crucial role as the key



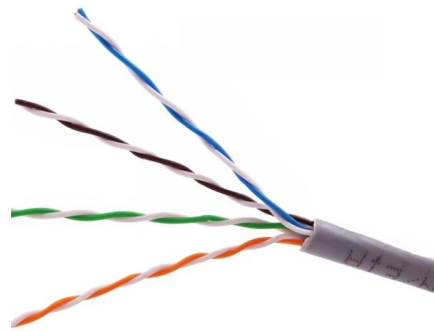
A comprehensive understanding of distribution box

? Introduction Distribution boxes are at the heart of safe and organized electrical systems--whether in residential, commercial, or industrial settings. But



Understanding Distribution Boxes: A Comprehensive Guide

Learn what a distribution box is, its types, and how to choose the right one for your project. Includes clear examples and expert tips.



Discover Europe's digital cultural heritage , Europeana

Hier sollte eine Beschreibung angezeigt werden, diese Seite lässt dies jedoch nicht zu.

Distribution Box Installation: A Complete Guide to Safe

The distribution box, often referred to as a breaker box, fuse box, or electrical panel, is a critical component of any electrical system. It acts as the central hub for



How Does a Metal Distribution Box Improve Electrical Safety and

Drawing on real-world applications and engineering principles, this article helps decision-makers understand why BSD metal distribution boxes are widely used in demanding environments.





Safe Distributions: Guidelines for Reducing Protection Risks in

Safe Distributions: Guidelines for Reducing Protection Risks in in-kind Distributions
Distributing immediate, lifesaving assistance is one of the most urgent actions in an emergency response and



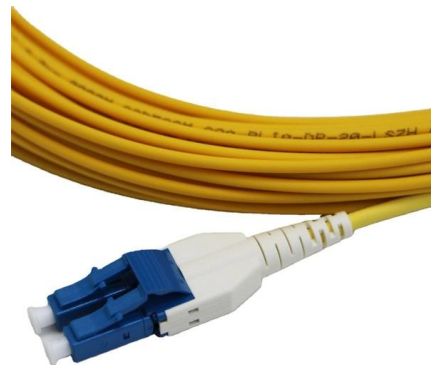
Understanding Distribution Boxes: A Comprehensive Guide

Distribution box What Is a Distribution Box Used For A distribution box is used to receive electrical power from a main supply and distribute it to



The installation requirements for the distribution box

A distribution box is the heart of any electrical system. It takes the incoming power and safely distributes it to different circuits throughout your



Atlantic International University

Hier sollte eine Beschreibung angezeigt werden, diese Seite lässt dies jedoch nicht zu.



Temporary Power Safety: Distribution Boxes + Industrial

Learn how construction power, temporary electrical boxes, and IP67 connectors combine with E-abel distribution panels and Weipu industrial



Distribution Center Best Practices to Improve Safety & Efficiency

If you oversee a distribution center and you've struggled with either of these, you might be surprised by the opportunities at your disposal to tackle them both with a simple, but decisive,

Essential Insights and Tips for Septic System Distribution Boxes

Discover key insights and maintenance tips for septic system distribution boxes to ensure optimal performance and longevity.



[cs-178-project/imdb.vocab at main · apmalani/cs-178-project](#)

Contribute to [apmalani/cs-178-project](#) development by creating an account on GitHub.



Protecting Workers at Your Distribution Center: What

When you run a distribution center, protecting workers is of high priority. Check out these tips to ensure you're running a safe facility.



Choosing a suitable distribution box and what should be noted

You should pick a distribution box by thinking about your safety, what you need, and how much you can spend. The best box keeps your electrical system safe and ready for changes later.



How To Maximize Worksite Safety When Using Power Distribution Boxes

Power distribution boxes are designed to be rugged, durable, and dependable in even the most challenging situations and outdoor environments. Safety Standards for Temporary Power



Design requirements and standards for low voltage

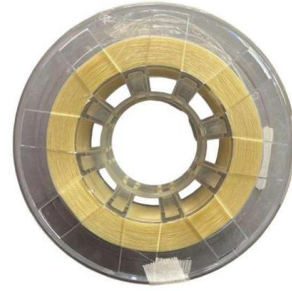
You must make safety your top priority when working with low voltage distribution boxes. Design requirements help you follow important standards like





Key Material Requirements for Distribution Box

To prevent electric shock or short circuits, distribution boxes must be made from materials with excellent insulating properties. Insulating materials help



Understanding the Importance of Distribution Board Boxes in Electrical

Distribution board boxes--sometimes called electrical panel boxes--are pretty important when it comes to safely and efficiently spreading out electricity in homes and businesses alike. If

Contact Us

For datasheets, pricing, or custom high-speed optical interconnect solutions, please visit:
<https://www.syropy.com.pl>