

How to locate the power supply in the distribution box





How to locate the power supply in the distribution box



How to determine the size, installation method and

(1) Wiring method of distribution box 1)
Generally, the incoming line of power distribution box adopts five wire system, that is, a, B and C three-way phase line

Understanding Distribution Boxes: Your Guide to Power

Whether you are a professional electrician, a facility manager, or even a homeowner trying to better understand the electrical system of your



How To Read The Distribution Box System Diagram

?Check electrical parameters?: First understand the basic electrical parameters of Distribution box so that you can have a general understanding of

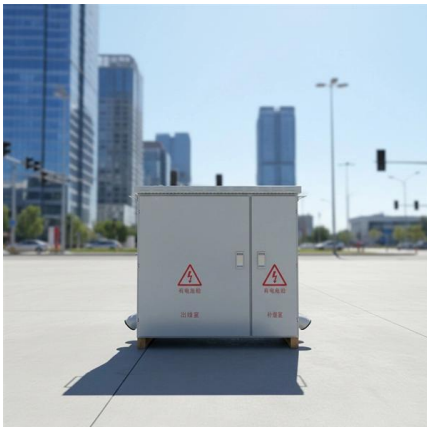
Understanding Distribution Boxes: A Comprehensive Guide

Learn what a distribution box is, its types, and how to choose the right one for your project. Includes clear examples and expert tips.



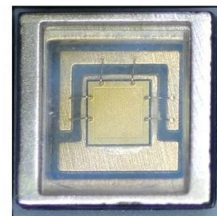
Explore Power Distribution Box Types and Functions

Power distribution boxes are used in commercial and residential buildings and are part of the electrical system, also known as switchboards.



Distribution Box Guide: Types, Components & Solutions

Understand distribution boxes (DB boxes) in 5 minutes. Learn about types, components, functions, and uses. Find the perfect DB box for your needs.



A Definitive Guide To Distribution Boxes

The distribution box acts as the center of power distribution, distributing electricity to all connected devices. A distribution box, also known as a distribution board, panel board, breaker





How Does a Power Distribution Box Work

Learn how a power distribution box works step by step--from incoming power to circuit protection and smart monitoring--for safe, efficient electricity delivery.

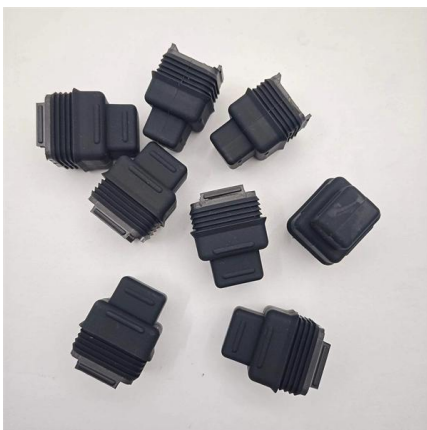


Wiring of the Distribution Board (Single Phase Supply)

Wiring of the Distribution Board with RCD (Single Phase Supply From Utility Pole & Energy Meter to the Consumer Unit) In the following single phase electrical wiring

Size determination, installation method and wiring mode

The distribution box is the central hub of the home circuit and the general control of our daily power consumption. It is an indispensable electrical equipment. If there



Understanding Distribution Boxes: A Comprehensive Guide

Distribution Box: This is the most common type, used for distributing electrical power to various circuits in any type of building or facility. It distributes



Power Distribution Box Essentials: Functions, Types

Power is fed into the box from the main supply. From there it is distributed into various circuits integrated into the corresponding building. This



Distribution Box Installation: A Complete Guide to Safe

The distribution box, often referred to as a breaker box, fuse box, or electrical panel, is a critical component of any electrical system. It acts as the central hub for

How To Read The Distribution Box System Diagram

?Analyze the incoming line part?: Determine the incoming line source of the distribution box and the configuration of the incoming line circuit breaker, and understand the power supply method

An Extensive Library of Self-Developed Products



The Complete Guide to Distribution Box: Installation, Types & More

Understanding the key components of a distribution box helps you make informed decisions about installation and maintenance. Each element plays a specific role in ensuring safe



A Step-by-Step Guide to Wiring an Electrical Panel Box

Find out how to properly wire an electrical panel box with a comprehensive diagram and step-by-step instructions.

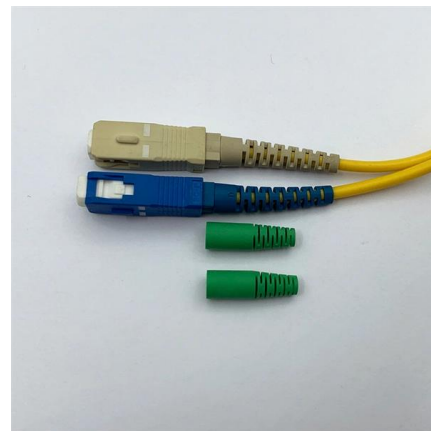


How to Wire a Single Phase Breaker Box: Step-by-Step

A single phase breaker box, also known as a distribution board, is an electrical panel that controls and distributes electrical power in residential and commercial

Power Distribution Boards: Understanding their role

Power distribution boards, also known as a panelboard or fuse box, is a crucial component in both commercial and residential electricity supply



How to Wire a Home Distribution Box

The above mentioned electrical wiring accessories and protective devices are used to control and distribute electric supply (safely to connected electrical appliances)



Distribution Boards

Distribution boards, often referred to as electrical panels or breaker boxes, serve as the nerve center of any electrical system. Here we explore the crucial parts of a distribution board and gain insights into



What is the Function of a Distribution Box in Electrical Systems

Understand the function of the distribution box in electrical systems and how it ensures safe and efficient power distribution.

Power Distribution Boxes Explained Simply

Learn what a power distribution box is, how it works, key components, types, and why it's vital for safe and efficient electrical systems.



Distribution Board Schematic Diagram

A distribution board schematic diagram is a visual representation of the connections in the distribution board. It shows how electricity flows from the



Power Distribution Box

This manual contains important instructions for Power Distribution Box that should be followed during installation, operation and maintenance of the Power Distribution Box to protect the safety of the



What is a Distribution Box? - A Comprehensive Guide

A distribution box organizes and controls power flow, ensuring safety and efficiency in electrical systems.

Contact Us

For datasheets, pricing, or custom high-speed optical interconnect solutions, please visit:
<https://www.syropy.com.pl>