

How to locate the distribution box





Overview

Bottom Line Up Front: Your home's distribution box (electrical panel) is typically located in the basement, garage, utility room, or mounted outside near your electrical meter. To find it quickly, look for a rectangular gray metal box about the size of a medicine cabinet, often positioned close to. They're usually made of either plastic or concrete, and they have several openings on different sides where the drain field lines connect to the box. This septic system inspection article explains where to look for and how to locate septic system components for any purpose such as inspection, maintenance, troubleshooting or repair, or as part of the Septic Loading and Dye Test procedure for testing the function of septic systems.



How to locate the distribution box

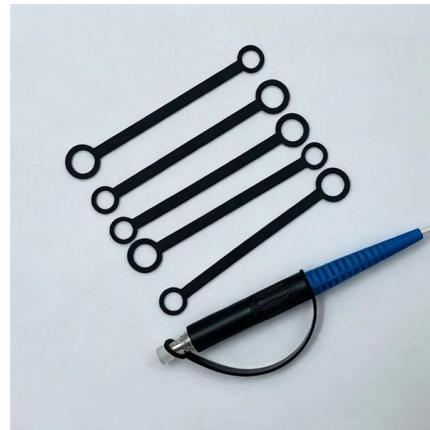


Understanding Distribution Boxes: A Comprehensive Guide

These boxes come in a variety of sizes and shapes depending on how complex a system is and the electric requirements of the building. A variety

Power Distribution Boxes Explained Simply

Discover the essentials of a Power Distribution Box--how it works, key types, benefits, and tips to ensure safe, efficient electrical power management.



Discover Your Home's Septic Tank Distribution Box

Learn the simple steps to find your septic tank's distribution box and maintain proper function.

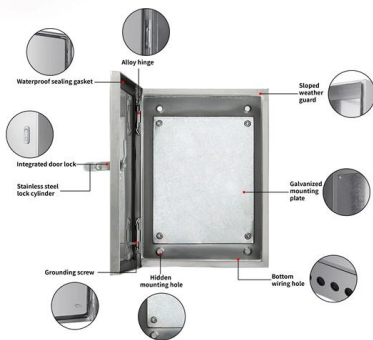
The ultimate hack: how to discover your septic distribution box in

Yes, you can locate your distribution box on your own using the steps outlined in this guide. However, if you encounter difficulties, it is advisable to hire a professional.



Power Distribution Boxes Explained Simply

Learn what a power distribution box is, how it works, key components, types, and why it's vital for safe and efficient electrical systems.



Step-by-step guide: find your drain field box with confidence

Maintaining a septic system requires regular inspection and maintenance, including locating the drain field distribution box. This box serves as the central hub for distributing wastewater



How to Find Your Septic Distribution Box

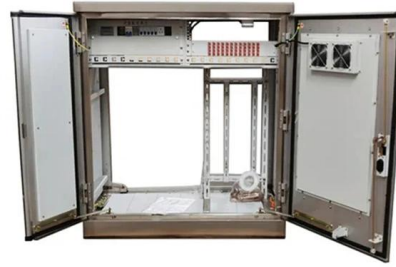
Systematically locate your hidden septic distribution box. Use system maps, tank tracing, and safe, effective probing methods.

What Is an Electrical Distribution Box? A



Complete Guide

An electrical distribution box routes power, prevents overloads, and keeps wiring organised--essential for safe, efficient home and



The Complete Guide to Septic Tank Distribution Boxes

The distribution box serves to evenly divide and distribute the effluent exiting the septic tank to the entire drain field. When wastewater enters the box

Where Is the Distribution Box Located and How to Find It

Learn where distribution boxes are typically located in homes and get step-by-step instructions for finding your electrical panel. Includes safety tips and



A Definitive Guide To Distribution Boxes

The distribution box acts as the center of power distribution, distributing electricity to all connected devices. A distribution box, also known as a distribution board, panel board, breaker



Size determination, installation method and wiring mode

The distribution box is the central hub of the home circuit and the general control of our daily power consumption. It is an indispensable electrical equipment. If there

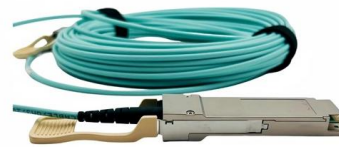


Distribution Boxes Explained: Types, Functions, and

Learn about distribution boxes, their types, functions, and safety features to ensure efficient and secure electrical power distribution in any building.

DIY Drain Field Rescue: A Step-by-Step Guide to Locating Your

Locating your drain field distribution box is a crucial step in maintaining your septic system. By following the steps outlined in this guide, you can find the box with confidence.



Distribution Box Installation: A Complete Guide to Safe

The distribution box, often referred to as a breaker box, fuse box, or electrical panel, is a critical component of any electrical system. It acts as the central hub for

Understanding Distribution Boxes: A



Comprehensive Guide

A distribution box, also known as a power distribution box or electrical distribution box, is used to distribute electrical power safely to multiple

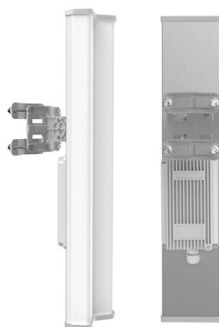


How to find the septic tank, D-box, Drainfield

See SEPTIC D-BOX INSTALL, LOCATE, REPAIR where we describe how to find the drop box, D-box or distribution box and how to inspect and repair it depending on what you see there.

Septic Tank Distribution: All You Need to Know about

The distribution box for a plastic septic tank functions the same as a concrete distribution box, distributing the treated wastewater evenly to the



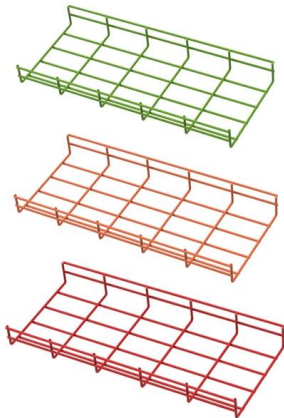
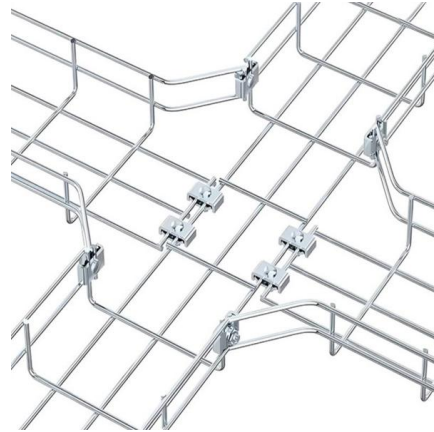
What is a Septic Distribution Box: A Clear Explanation

To locate the distribution box, one can follow the path of the drain lines from the



Understanding Distribution Boxes: Your Guide to Power

Weatherproof Distribution Boxes These serve specific outdoor purposes, with rain, dust, and extreme temperatures sealed shut, protecting any



The ultimate hack: how to discover your septic distribution box in

However, locating this box can be challenging, especially if you're unfamiliar with your property or the septic system. This comprehensive guide will provide you with step-by-step

Step-by-step guide: find your drain field box with confidence

If you're struggling to locate the distribution box visually, consider using a metal detector. The metal detector will detect the metal components within the box, such as the lid or pipes.



How to Install a Cable Distribution Box Safely and

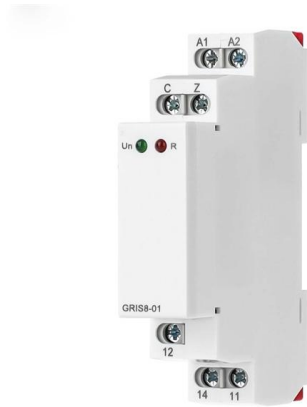
Reliable cable distribution boxes ensure safe, efficient power management for residential, commercial, and industrial systems. Learn





How to Expose a Septic Distribution Box

Join me on a rare sunny day as I take you step-by-step through how to locate, expose, and inspect a septic distribution box when it's not visible at the

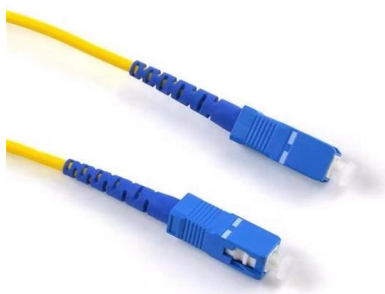


Where is the distribution box located and how to find it

Locate your distribution box by following the septic tank outlet, checking for access lids, and using property records for safe and accurate identification.

Hidden Treasure in Your Backyard: Locate Your Septic System

Finding your septic system distribution box is essential for proper maintenance and troubleshooting. By following these steps and utilizing the tips provided, you can successfully locate



What is a Distribution Box? - A Comprehensive Guide

A distribution box organizes and controls power flow, ensuring safety and efficiency in electrical systems.



How to Expose a Septic Distribution Box

Join me on a rare sunny day as I take you step-by-step through how to locate, expose, and inspect a septic distribution box when it's not visible at the surface. We'll walk through locating

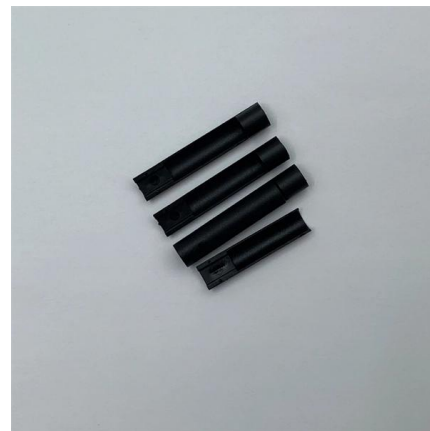


Septic System D-Box Definition, Location, Repair

We also provide links to additional details about how to inspect and repair the D-box if that's needed. In this article series about septic system drop boxes we describe the best procedures for locating and

How To Find The Distribution Box Of A Septic Tank

The distribution box directs the effluent from the septic tank through the drain field and pipes. It's usually along the edge of the drain field near your tank.



Contact Us

For datasheets, pricing, or custom high-speed optical interconnect solutions, please visit:
<https://www.syropy.com.pl>