

How to leave the correct wiring length for the distribution box





Overview

) of free conductor, measured from the point in the box where it emerges from its raceway or cable sheath, shall be left at each outlet, junction, and switch point for splices or the connection of luminaires or devices. Choose the right box based on environment (indoor/outdoor), load capacity, and durability. Ensure safe placement: install in dry, accessible areas with good ventilation and at appropriate height (typically ~1. You may also want to know: Are Bing and Yahoo the Same?

- Are Sony and Murata Partners?

Electrical work, even. The required length of wire left inside an electrical box is a matter of safety and future maintenance, ensuring that devices can be installed and serviced without complication. Wire handling: Peel off the insulation layer of the wire according to the required length to ensure that the exposed length of the conductor is moderate (either too long or too short may cause short circuits or poor contact).



How to leave the correct wiring length for the distribution box

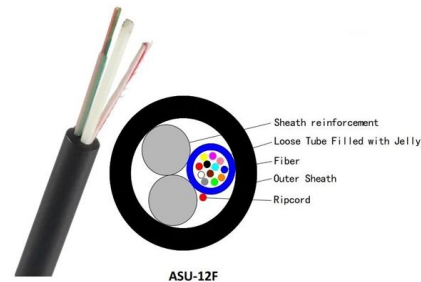


Correct Connection Method Of Grounding Wire Of

Following the above steps and precautions can ensure the correct connection of the distribution box grounding wire, thereby ensuring the safe

How Much Extra Wire Should Be in an Outlet Box?

Meeting both the six-inch length inside the box and the three-inch extension outside the box is necessary for compliance, guaranteeing the wire can be pulled out far enough to work with



How To Wire A Distribution Board (DB Board): A Step-By-Step Guide

A distribution board (DB board), also known as a fuse box or breaker panel, is essential for managing electrical circuits in a building. It distributes electrical power from the main supply to

How to Wire a Home Distribution Box

How to Wire a Home Distribution Box - Step-by-Step , Distribution DB box wiring diagram
Welcome to our channel! In this video, we'll walk you through the



Single Phase DB Box Wiring: Your Ultimate Guide!

Single phase DB box wiring involves connecting the live, neutral, and earth wires to their respective terminals in the distribution board. It's essential for distributing power safely in a single

Length of wires coming out of a box

At least 150 mm (6 in.) of free conductor, measured from the point in the box where it emerges from its raceway or cable sheath, shall be left at each outlet, junction, and switch point for



How to wire a DB - Distribution Board Wiring -

Through the MCB phase lines are distributed to electrical wiring for lighting, fixed devices, and power distribution points. This type of arrangement is





Step-by-Step Guide to Wiring a 3 Phase DB Box

Learn about the wiring process for a 3 phase distribution board (DB) box, including the necessary steps and safety precautions. Understand how to connect the

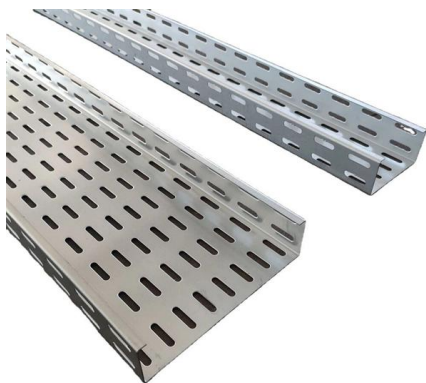


How To Connect A Distribution Box

Learn how to connect a distribution box with this easy-to-follow, step-by-step guide. From tools and materials needed to common installation mistakes and solutions, this comprehensive article will

Home Distribution DB Box Wiring Connection Diagram , DB box wiring ,

Welcome to our channel ?@Electricalgenius? In this video, we'll take you through a detailed step-by-step guide on wiring a home distribution DB (Distribution Board) box.



How to Wire a Home Distribution Box

How to Wire a Home Distribution Box - Step-by-Step , Distribution DB box wiring diagram
Welcome to our channel! In this video, we'll walk you through



Distribution Box Wiring Steps

?Wiring Direction?: Wiring between the main circuit breaker and each branch circuit breaker in the box generally goes on the left, and the wiring out of



A Step-by-Step Guide to Wiring an Electrical Panel Box

A Step-by-Step Guide to Wiring an Electrical Panel Box An electrical panel box, also known as a breaker box or a distribution board, is a crucial component of any

The Complete Guide to Distribution Box: Installation, Types & More

What's the difference between a distribution box and a sub-panel? A distribution box typically refers to the main electrical panel that receives power from the utility service. A sub-panel is



Electrical Appliances: How To Make The Correct Layout

The correct distribution box line configuration can save time and circuit, which requires us to master certain technology and skills, according to these skills to



on video How to Wire a Home Distribution Box

How to Wire a Home Distribution Box - Step-by-Step , Distribution DB box wiring diagram
Welcome to our channel! In this video, we'll walk you through the



House Wiring Distribution Board - Wiring Flow Schema

House wiring is an essential part of any home's electrical system and a necessary component for its smooth functioning. The distribution board is the heart of the

How to determine the size, installation method and

When the wall is built, the reserved hole shall be about 20 mm larger than the length and width of the distribution box. The reserved depth is the thickness of the



Requirements And Specifications For Installation Of

In flammable and explosive environments, explosion-proof distribution boxes should be selected and explosion-proof treatment should be carried out.



How to Install a Cable Distribution Box Safely and

Wiring arrangement: Arrange the wires neatly in the box, fix them with zip ties, avoid wires from tangling or coming into contact with sharp edges, and

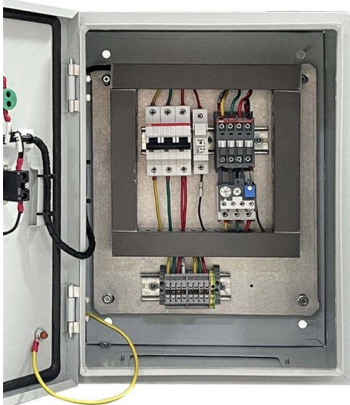


How to Install a Distribution Box--A Comprehensive

Wire Preparation: Cut the insulation layer of the wire, leaving a suitable length of the exposed conductor. Circuit Breaker: Install independent

Understanding Circuit Breaker Wiring Configurations in

Correct wiring methods for circuit breakers within distribution boxes are fundamental to ensuring electrical safety and compliance with established codes.



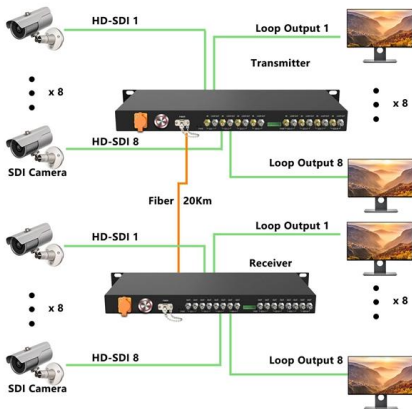
How to Install a Distribution Box--A Comprehensive

Remember to leave enough space around the box for better ventilation and maintenance. The capacity must be large enough to



How Much Wire to Leave in an Electrical Box?

Generally, you need to leave at least six inches of wire extending from the box, with at least three inches available to splice, allowing for safe connections and future adjustments.

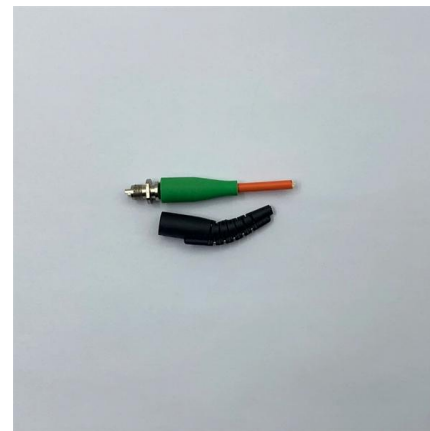


Create a branch named `dev` for this work. If files are

This capability is improving quickly, with task length doubling about every seven months. Only a few years ago, models could manage about 30 seconds of reasoning - enough for small code

Code Buddy

Code Buddy New to Code Buddy? SIGN UP Need Help? Get Support



The Complete Guide to Distribution Box: Installation, Types & More

Blog The Complete Guide to Distribution Box: Installation, Types & More By Admin Aug 2, 2025 No Comments # distribution box Introduction Electrical systems power our homes, offices, and



Contact Us

For datasheets, pricing, or custom high-speed optical interconnect solutions,
please visit:

<https://www.syropy.com.pl>