

How to interpret low-voltage bus current





How to interpret low-voltage bus current

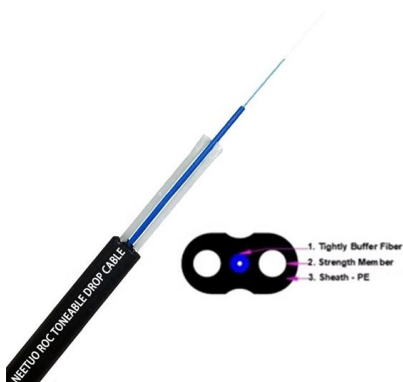
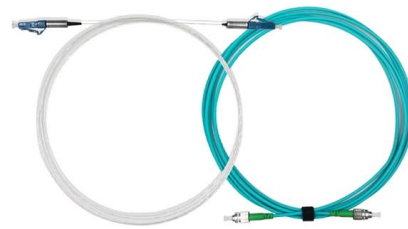


BUS VOLTAGE AND CURRENT MEASUREMENTS

For numerical evaluation of the system, the power system states are based on the angle and magnitude of voltages in every bus.

IEC 61439 Busbar Standard: A Guide to Low-Voltage

This standard covers busbars used for low-voltage assemblies, power distribution, photovoltaic power systems, and electrical energy control. The IEC



High-precision bus voltage control based on NLESO and

To address the problem of DC bus voltage fluctuations that affect the accuracy of output voltage and current, a high-accuracy bus voltage control

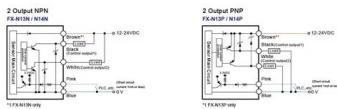
Precision, Low-Side Current Measurement (Rev. B)

One of the advantages of low-side current measurements is the common-mode voltage, or the average voltage at the measurement inputs is near zero. This makes it easier to design application circuits or



Effect of the bus voltage level on the power system

The present paper will focus essentially on the use of the 28 V unregulated bus voltage because early satellites, all used, a 14 V unregulated



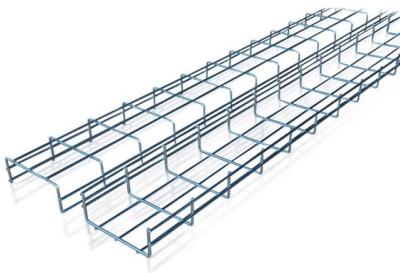
Bus Voltage

Note that power quality is represented by bus voltage deviation from the bus voltage reference. In the case study used in this paper, the preferred rated voltage is 5 kV.



Rockwell Automation

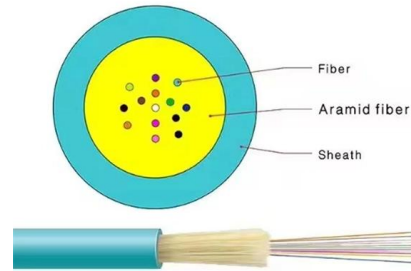
Hier sollte eine Beschreibung angezeigt werden, diese Seite lässt dies jedoch nicht zu.





DC Bus Voltage Selection for a Grid-Connected Low

This study examines various low voltage levels applied to a direct current residential nanogrid (DC-RNG) with respect to the efficiency and

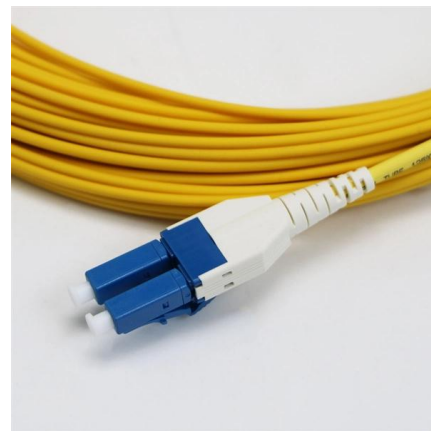


The Ultimate Guide to Low Voltage Busway Systems

Low-voltage Busduct Systems, such as the LV Series Compact Busduct, are designed to meet the highest safety and performance standards. These systems are available with copper or aluminum

How to Read and Interpret Single Line Diagram - Part Two

How to Read and Interpret Single Line Diagram - Part Two Today, we will explain the following:



- IP65/IP55 OUTDOOR CABINET
- OUTDOOR CABINET WITH AIR CONDITIONER
- OUTDOOR ENERGY STORAGE CABINET
- 19 INCH

Dc Bus Voltage

The dc link bus voltage in VSIs is usually considered a constant voltage source v_i . Unfortunately, and due to the fact that most practical applications generate the dc bus voltage by means of a diode



IDENTIFICATION OF WEAK BUSES IN ELECTRICAL POWER

Both modal analysis technique and load power margin values are applied upon the IEEE 39-bus test power system. From there, five weak buses in the test power system are selected and compared.



Current Sensing with PMBus Digital Power System Managers--Part 1

This article covers both the analog and digital aspects and describes various supporting circuits for measuring current of low voltage, high voltage, and negative rails.

Technical Application Papers No.11 Guidelines to the construction

Technical Application Papers No.11 Guidelines to the construction of a low-voltage assembly complying with the Standards IEC 61439 Part 1 and Part 2



KNX Bus Voltage & Current: Measurement & Troubleshooting

They start by checking bus voltage and current. Most KNX communication problems are electrical in nature, even though symptoms look like programming errors. Understanding how to



Why Bus Voltage Is Critical for Power Distribution

Understand the critical role bus voltage plays in power distribution networks, governing efficiency and preventing system failures.

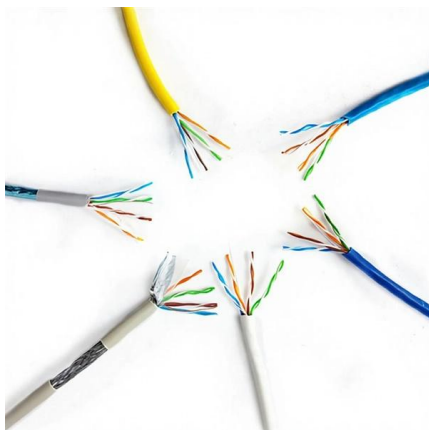


What could cause the DC bus voltage on a drive to drop when the

As the DC bus voltage drops, the motor current will increase to maintain the same power at the motor. If you were to look at your incoming power to the drive with an oscilloscope, you would

DC Bus Voltage High-Frequency Disturbances Analysis for DC

This article examines high-frequency disturbances in interconnected converters within dc microgrids, focusing on the effects of electromagnetic interference (EMI) filters and long



DC current bus distributed power system and its stability analysis

Currently, research mainly focuses on DPS with a DC voltage bus, including stability analysis and approaches to improve system stability. This study is to establish stability criteria for DPS with a DC



Optimization and Design of Low-Voltage and High-Current Point-of

The data center power supply architecture is changing from 12V to 48V, and the Point-of-Load (PoL) converter is facing the problem of how to achieve a high step-down ratio and high efficiency under

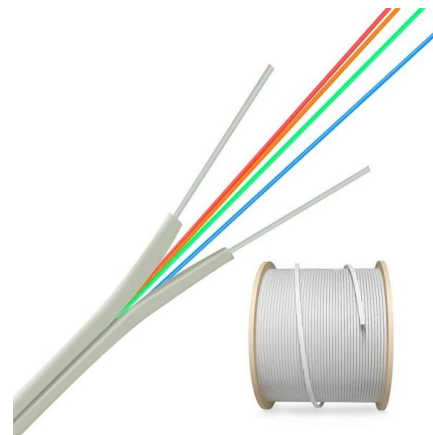


The essentials of LV/MV/HV substation bus overcurrent and

Low-voltage bus and switchgear are often protected by current-limiting fuses, sized to the full-load rating when bus and switchgear have bus bracings that are less than the available fault current.

How to interpret a linear power supply's data sheet, Part 1

They must reliably deliver voltage and current that is stable, precise, and clean, no matter the type of load--resistive, inductive, capacitive, low



Determination of bus current, bus power, and line flow

Determination of bus current, bus power, and line flow for a specified system voltage (Bus) Profile.



CAN Bus And SAE J1939 Bus Voltage

CAN Bus Medium According to ISO-11898 specification, the CAN bus medium must support two logical states: Recessive and dominant. A CAN



What Is Bus Voltage and How Does It Work?

The bus voltage in this context is the negotiated voltage on the USB cable's power pins. Your device and charger communicate electronically to agree on a voltage and current combination

How to interpret Technical Data Sheet for Low Voltage

Typical ANSI / NEMA switchgear is rated for a maximum of 635 volts with a continuous current main bus rating of a maximum of 10,000 amps (for



How to read single one line diagram , Electric Arc

You can tell from the one-line that the automatic transfer switch would connect the emergency generator into the circuit to keep equipment running, if power from the bus were lost. A low-voltage motor



Contact Us

For datasheets, pricing, or custom high-speed optical interconnect solutions, please visit:

<https://www.syropy.com.pl>