

How to install the power cable tray in the server rack





How to install the power cable tray in the server rack

MTP MPO SC-Type Fiber Adapter



Server Racks How to Install Server Rack Equipment

To install your server rack equipment, fasten the mounting screws into the cage nuts. After you tighten your screws, check to make sure your rack equipment is securely installed. If you have questions

Basic Rack PDU for Blade Server Installation

To install the Rack PDU using the toolless mounting method, install it in the rear of the NetShelter® VX or SX Enclosure, in the cable channel directly behind the rear vertical mounting rails.

DETAILS DISPLAY

Focus On Every Detail



Neat & Clean Layout

Cleaner arrangement of components. Easy to operate

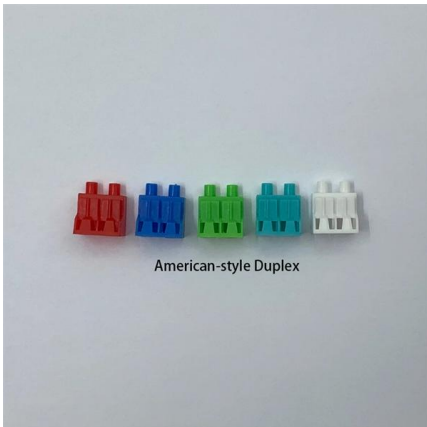


Installing the Server Into a Rack With Slide-Rails

This chapter describes how to place the server into a rack using the rail assembly in the rackmount kit. Perform this procedure if the rail assembly is purchased.

How to Improve Cable Management for Server Racks

Final Thoughts: Mastering Cable Management for Server Racks Managing cables in server racks and network equipment racks is essential for

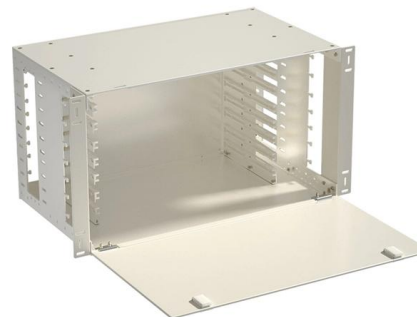


Macworld

Macworld is your ultimate guide to Apple's product universe, explaining what's new, what's best and how to make the most out of the products you love.

Tips and Guide for Server Rack Cable Management

Accessories for Cable Management There are some types of server rack cable management accessories: Vertical accessories. This organizer is used



Essential guide for Cable Tray Installation in Data Centres

Getting Ready for Cable Tray Installation in Data Centres Doing a proper job starts before you even pick up a tool. Checking the Site and Making



Installing a rack-based server

Installing the cable-management arm The cable-management arm is used to efficiently route cables so that you have proper access to the rear of the system. Use the procedure to install



How to Set Up a Home Server Rack (Complete DIY Guide)

Learn how to set up a home server rack with proper power, cooling, cable management, and hardware placement for a reliable home lab.



Server Rack Cable Management: Best Practices and

On the other hand, effective server rack cable management keeps everything organized, functional, and prepared for future expansions. This guide



Server Rack Cable Management: Best Practices and Comprehensive

Server rack cable management is a vital aspect of maintaining a reliable, efficient, and scalable IT infrastructure. By following best practices such as planning, using cable management accessories,





A Guide to Installing and Supporting Electrical Cable Trays

A professional guide to installing electrical cable tray systems per NEC Article 392. Covers support, securing cables, and fill calculations.



Best PC Cases of 2025: \$75 to \$200 Airflow, Thermals,

Cases Best PC Cases of 2025: \$75 to \$200 Airflow, Thermals, Cable Management, & Budget November 29, 2025 Last Updated: 2025-11-29 We're

9 tips: How to wire your server cabinet correctly

With our 9 tips, we provide you with step-by-step instructions that will make correct cabling a breeze. Get comprehensive advice now! Proper cabling of



How To Wire a Server and Network Rack , Tips & Best

What is a server and/or network rack and how do they compare? Server racks, from a strict technical point of view, are designed to house



How To Cable A Server Rack

Learn how to properly cable a server rack with this comprehensive guide. From organizing cables to ensuring proper airflow, we cover all the

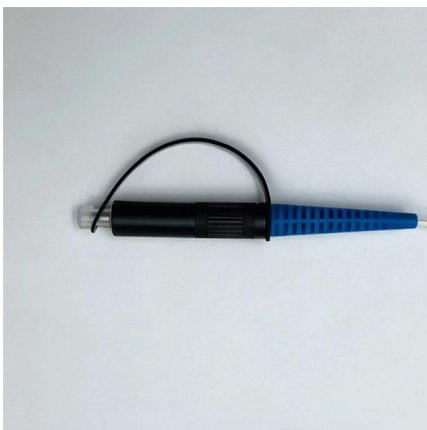


Install AC Power Cables and Slide-Rails

Prior to installing the slide-rails into the rack, install right-angle AC power cables into the left-side and right-side PDU electrical sockets for the servers you are going to rack mount.

Cable Management

Cabinets, Thermal Management, Racks and Enclosures Our vast selection of cabinets, thermal management, racks, enclosures for data centers,



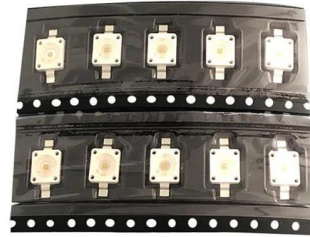
How To Properly Install Server Rack Power Distribution

Learn how to correctly install power distribution units (PDUs) in your server rack for efficient and reliable power management.



Network Rack Installation 101: Basics You Need to Know

Read the article to know the basics of network rack installation, from choosing the right rack type to cable management and maintenance tips.



How to Rack a Server: Step-by-Step Guide & Best Practices

Learn how to rack a server with this detailed step-by-step guide. Includes setup tips, cable management, cooling, and safety practices.

How to Setup a Server Rack: Tips and Tricks {Step-by

When installing a server rack, it's best to follow the general guidelines. Improperly installed server racks increase the probability of damage to



How do you organise the cables in your racks?

We will be using cable trays above the racks to carry our CAT 6 cabling to our core switch. These will be structured cabling - patch panels in the server rack and core rack.

Crackhead/pass.txt at master ·



moimikey/Crackhead ·

How to create a web form cracker in under 15 minutes. - moimikey/Crackhead



How to Plan A Server Rack Installation

Summary Whether you have a new server room or are expanding an existing datacentre, it is always good practice to go back to first principles when planning a rack installation. Rack power

HOWTO: Server Cable Management , by Matt Simmons

Since racks ARE meant to hold servers, all but the least expensive have built-in cable management. Typically there are channels running vertically



Contact Us

For datasheets, pricing, or custom high-speed optical interconnect solutions, please visit:
<https://www.syropy.com.pl>